

South Sacramento-Florin Steering Committee Air Monitoring Exercise Handout #1

The Steering Committee selected four priority concerns.

- Need to increase air quality education and outreach efforts
- Emissions from Highway 99/traffic
- Increasing rates of asthma and respiratory problems in the community
- Emission impacts from businesses

1. Which months do you notice the worst air pollution impacts?

2. Is there anything else to consider when creating the monitoring schedule? (e.g. school schedule, outdoor season)

Air Monitoring Exercise Goal:

- Provide District with a recommendation on monitoring schedule deployment for Phase 2 and 3

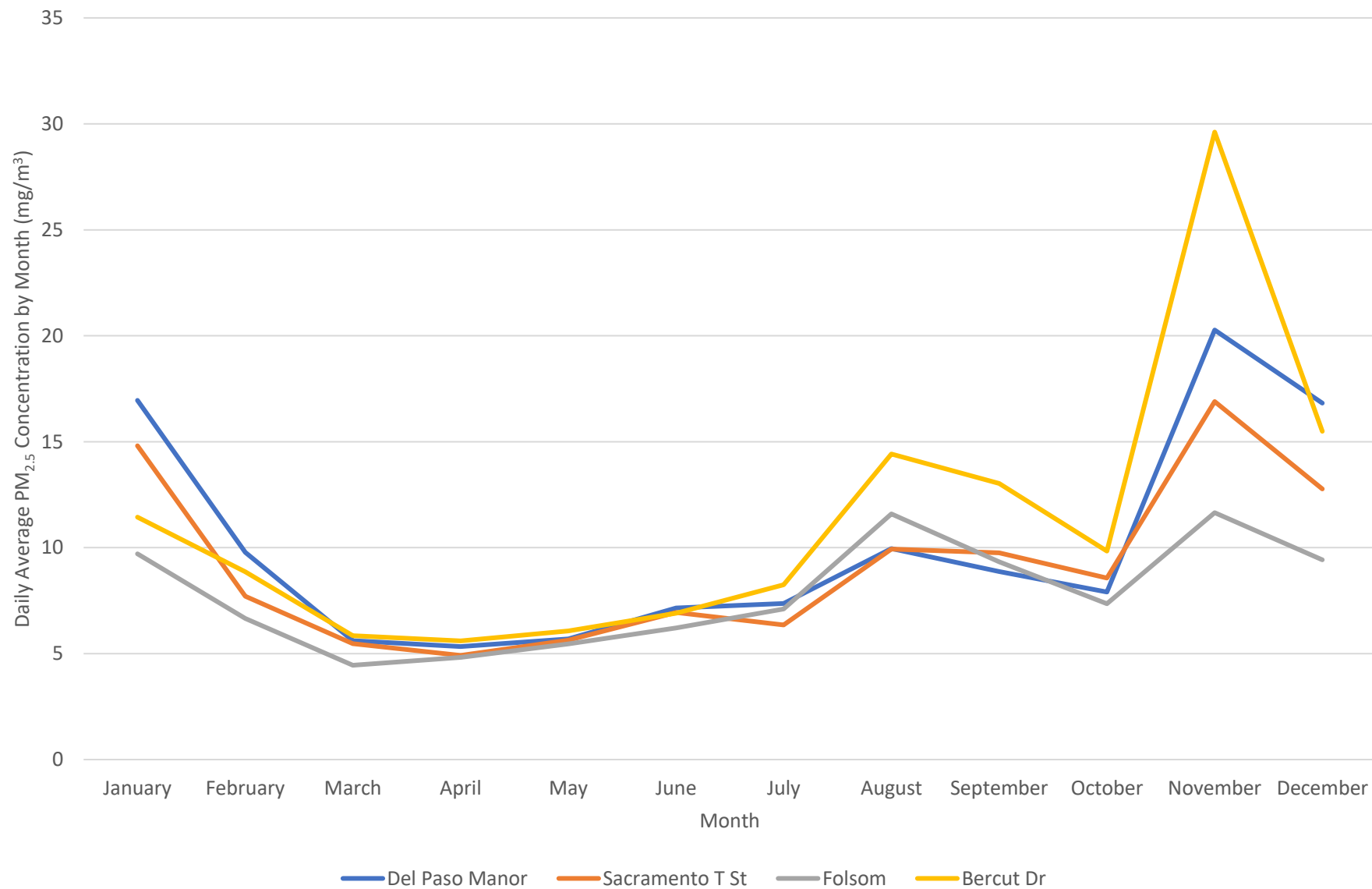
Description of Monitoring

- One goal of Phase 2 is to collect information for the committee to determine the best location for Phase 3
 - Area with worst air quality
 - Considerations may include existing and new air quality information, community knowledge, other information
- Phase 2 will collect air toxics (particulate and gaseous) and black carbon data at six sites

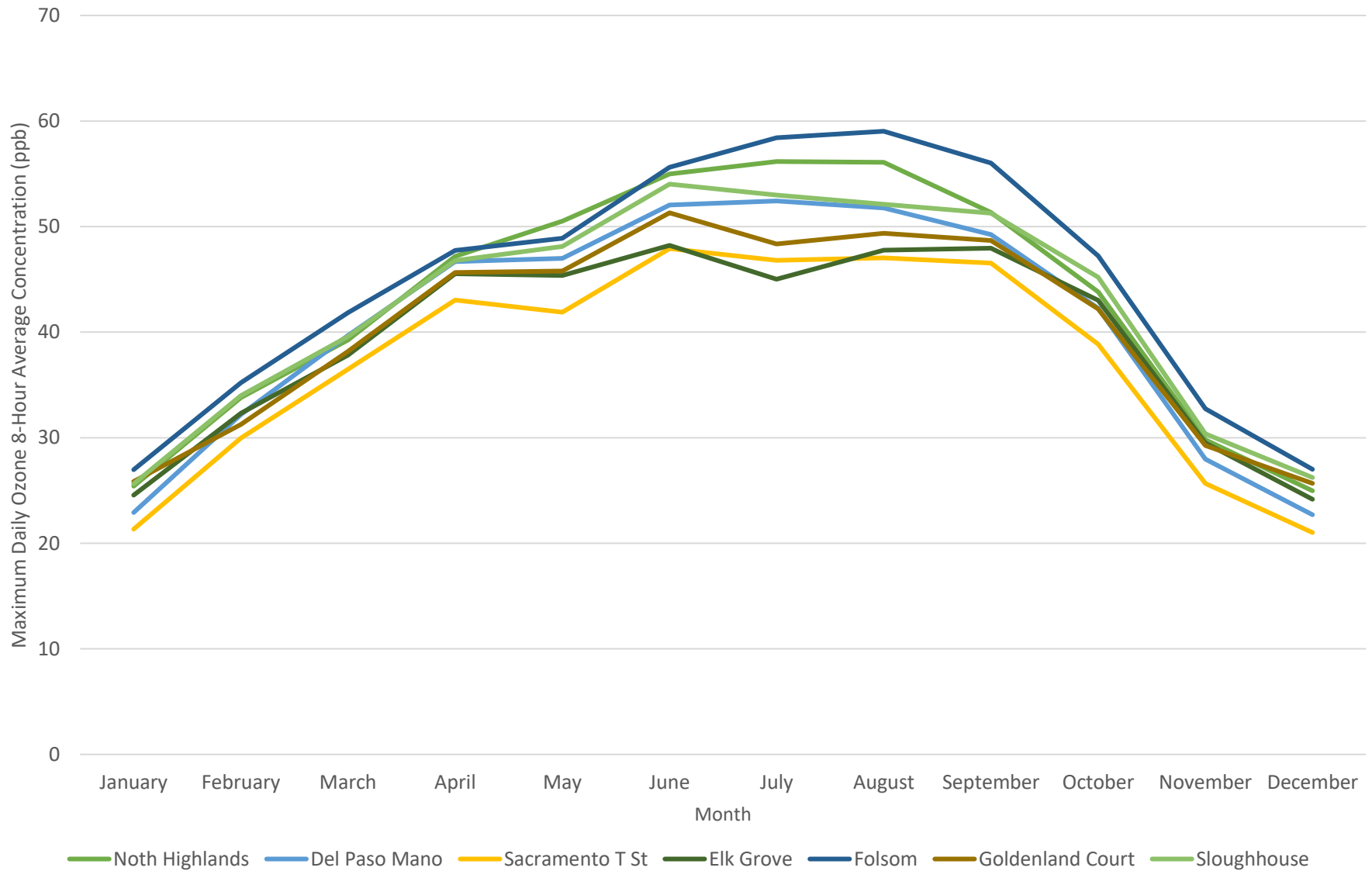
Air Monitoring Exercise Considerations

- Phase 2 monitoring could begin in December 2019
- Anticipate the trailer will be ready in May 2020
- To compare sites with each other, all sites will sample during the same months
- Suggest up to 6 months of sampling for Phase 2
- 6 months of sampling do not have to be consecutive
- Sampling in different seasons can provide a more complete picture of air quality in the community
- District is providing handouts with:
 - Air quality data by month for:
 - PM2.5
 - Ozone
 - Emission inventory (summer/winter)
 - Air quality complaints by month
 - School and sports seasons (list of known school and sports seasons)
 - Wind roses (annual, winter, summer)
 - Map of Sacramento County's regulatory air monitoring stations

Daily Average PM_{2.5} Concentration (2014-2018)

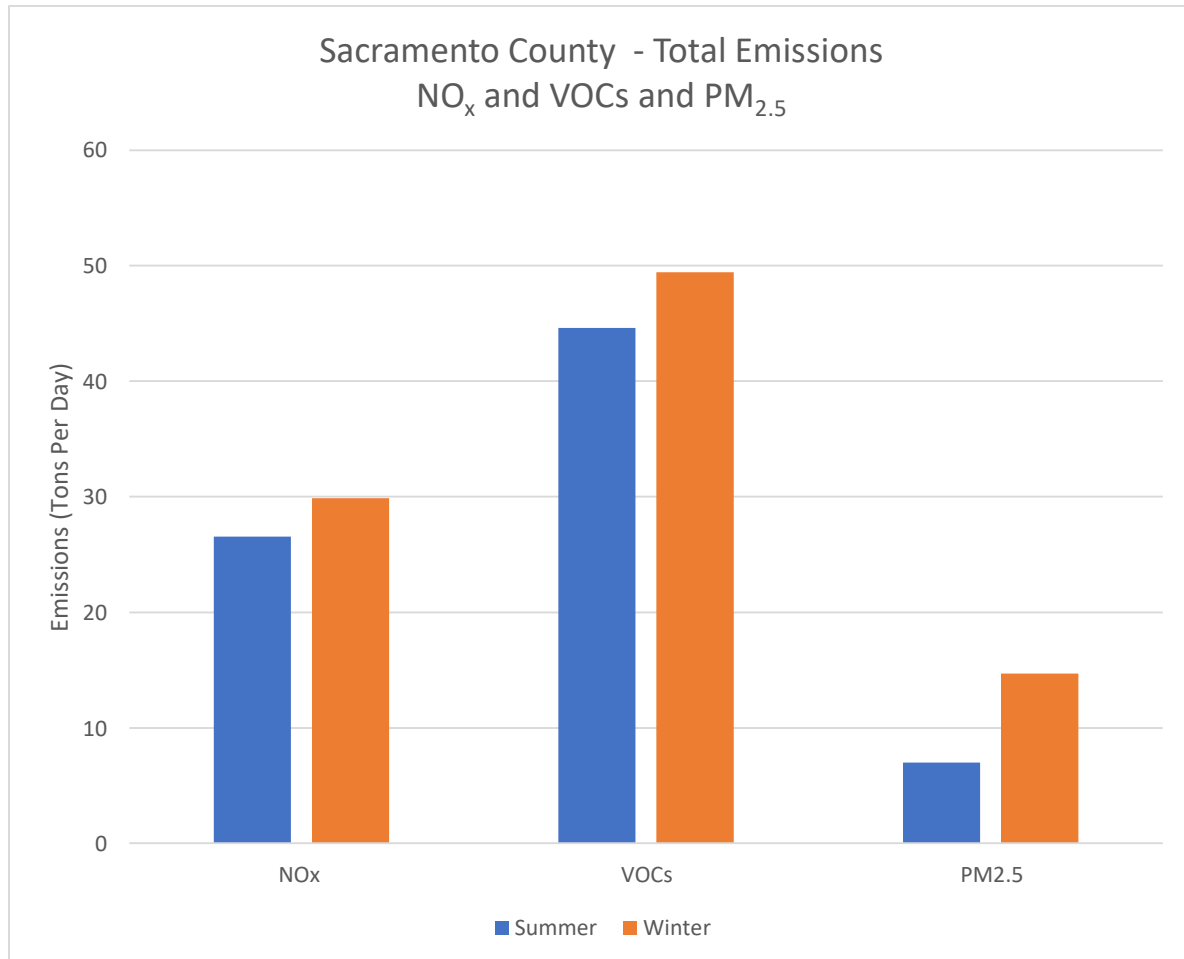


Average of Daily Maximum 8-Hour Ozone Concentration 2014-2018



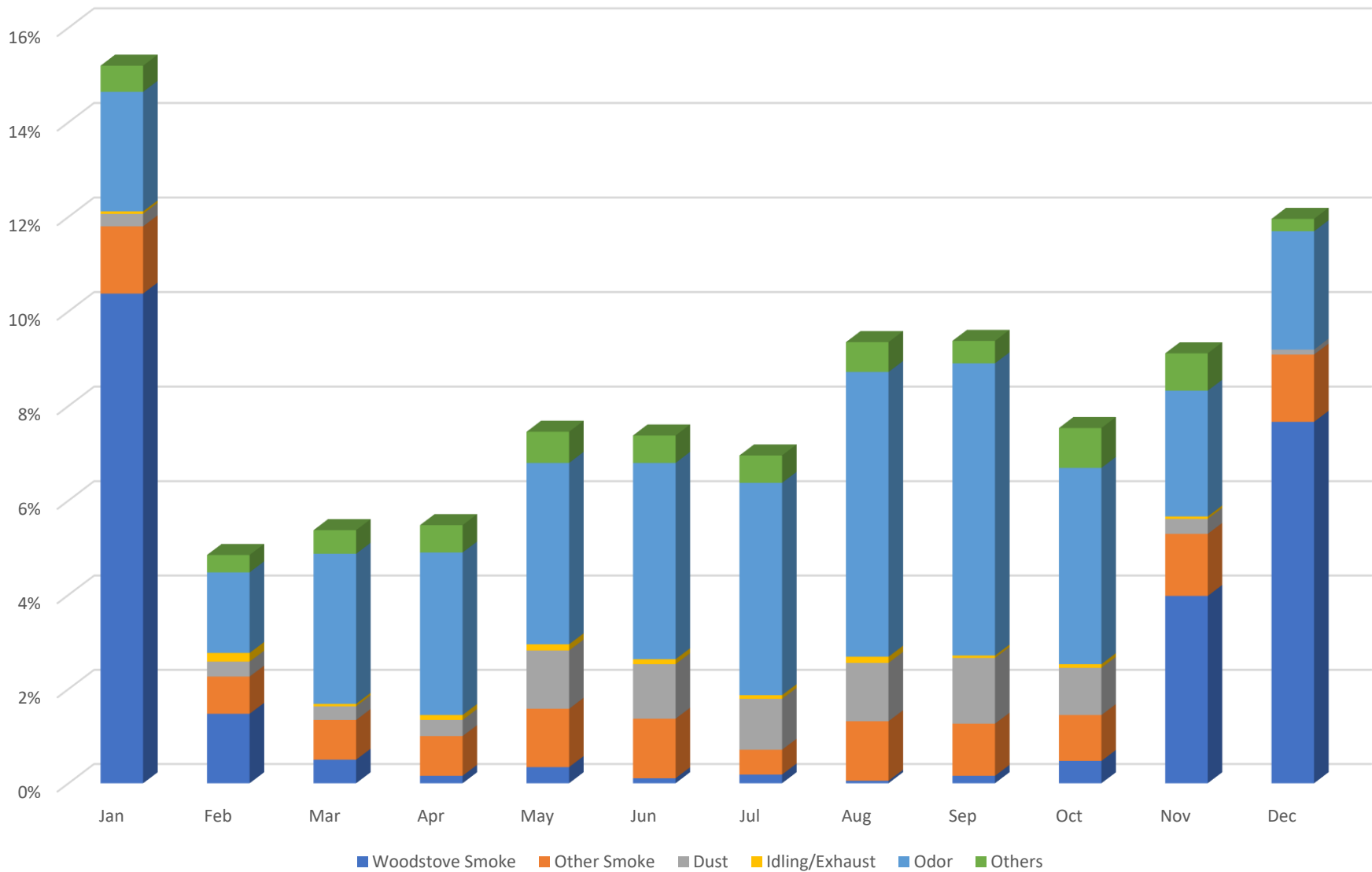
TEMPORAL TRENDS IN EMISSIONS INVENTORY

The graph below shows the emissions inventory in 2020 for Sacramento County for winter (November – February) and summer (May – September) for the following pollutants: Volatile Organic Compounds (VOCs), Oxides of Nitrogen (NO_x) and Particulate Matter of 2.5 microns or less (PM_{2.5}). Emissions are based on the data available for the county, not specifically for the South Sacramento-Florin Community.

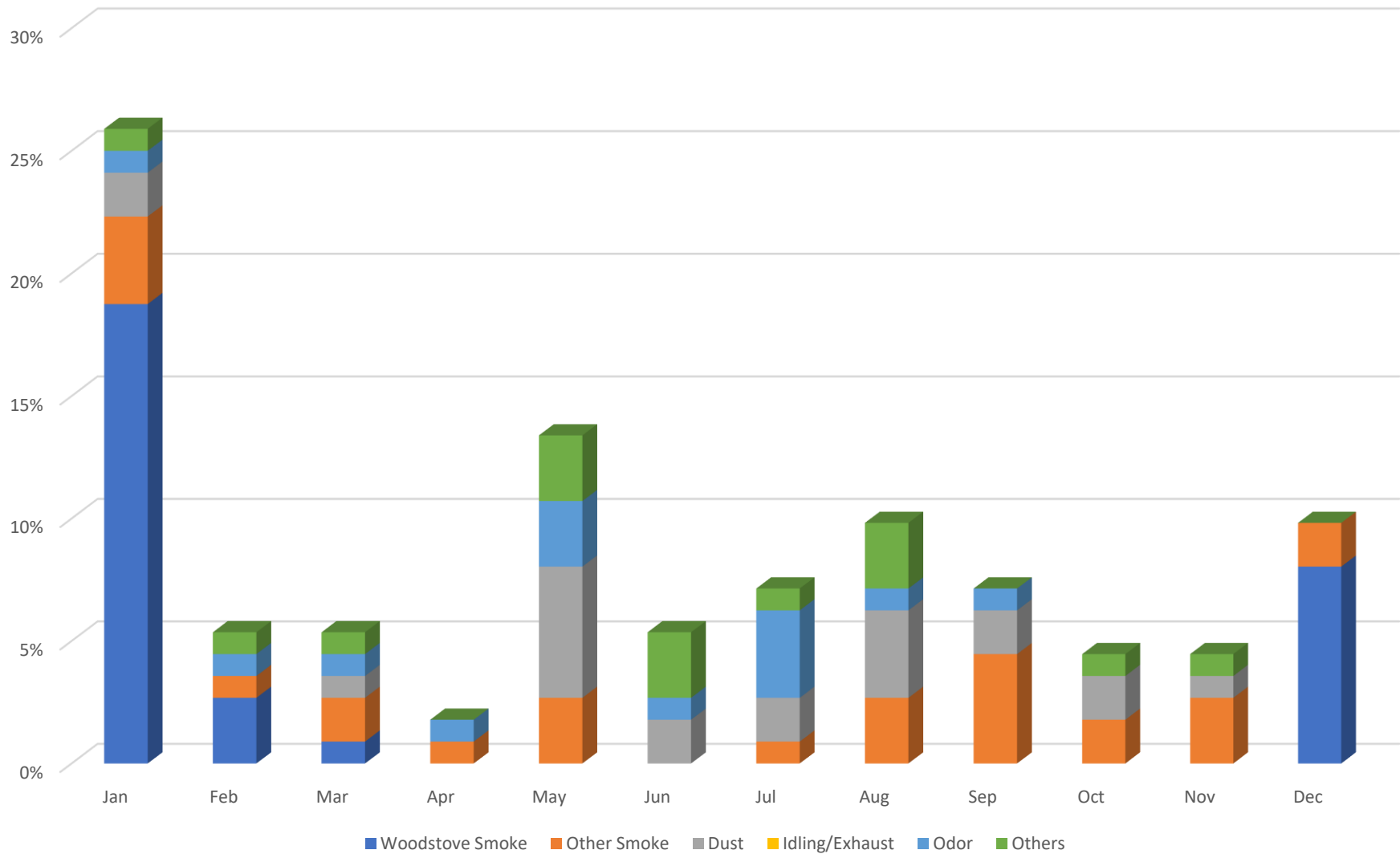


Percentage of All Compliers in Sacramento County (2014-2018)

Total 3797 Compliers



**Percentage of All Compliers in South Sacramento - Florin Community
(2014-2018)
Total 112 Compliers**



School and Sports Seasons for South-Sacramento-Florin Area

	Start	End
Schools		
Sacramento City Unified School District	8/29	6/11
Elk Grove Unified School District	8/15	5/29
Cosumnes River College	Year Round	Year Round
High School Sports		
Football	August	November
Baseball	February	May
Soccer	August	February
Cross Country	August	November
Track and Field	February	May
Softball	February	May
Golf	August	November
Recreational League Sports		
AYSO Soccer Regular	August	November
AYSO Soccer Select Season	January	March
AYSO Soccer Adult Season	April	July
Sacramento Parks and Recreation Division Flag Football	September	November
Sacramento Youth Soccer League	September	October
Sacramento Parks and Recreation Junior Giants Baseball League	June	August
Florin Little League	April	June

Sports seasons are based on the competition season and may not include practice seasons.

School schedules are from school district or college websites.

[https://www.scusd.edu/sites/main/files/file-attachments/2019-](https://www.scusd.edu/sites/main/files/file-attachments/2019-20_traditional_school_year_calendar_v6_august_29_final_0.pdf)

[20 traditional school year calendar v6 august 29 final 0.pdf](https://www.scusd.edu/sites/main/files/file-attachments/2019-20_traditional_school_year_calendar_v6_august_29_final_0.pdf)

[http://www.egusd.net/wp-content/uploads/2018/11/19-20 Traditional Calendar.pdf](http://www.egusd.net/wp-content/uploads/2018/11/19-20_Traditional_Calendar.pdf)

School sports seasons are taken from schedules available from school athletics departments,

Recreational league seasons were obtained from league or Sacramento County websites.

<https://www.facebook.com/florinlitleleague2014/>

<https://www.cityofsacramento.org/ParksandRec/Youth-Division/Youth-Sports-and-Summer-Programs/JR-Giants>

<https://www.cityofsacramento.org/ParksandRec/Youth-Division/Youth-Sports-and-Summer-Programs/Middle-School-Sports-Fitness-and-Wellness>

<https://www.sysl.com/schedules>

<https://www.antelopeayso.org/Default.aspx?tabid=863434>

School Seasons

January	February	March	April	May	June	July	August	September	October	November	December
Sac City School District							Sac City School District				
Elk Grove School District							Elk Grove School District				
Cosumnes River College							Cosumnes River College				

Calendar does not include summer sessions

Middle and High School Sports Seasons

January	February	March	April	May	June	July	August	September	October	November	December
Soccer							Soccer				
	Baseball and Softball						Football				
	Track and Field						Cross Country				
							Golf				

Sports seasons do no include practice season.

Recreational Sports Seasons

January	February	March	April	May	June	July	August	September	October	November	December
AYSO Select							AYSO Regular				
			AYSO Adult					Sac Parks and Rec Flag Football			
			Florin Little League					Sac Parks and Rec Youth Soccer			
					Sac Parks and Rec Junior Giants						

Sports seasons are based on the competition season and may not include practice seasons.

School schedules are from school district or college websites.

https://www.scusd.edu/sites/main/files/file-attachments/2019-20_traditional_school_year_calendar_v6_august_29_final_0.pdf

http://www.egusd.net/wp-content/uploads/2018/11/19-20_Traditional_Calendar.pdf

School sports seasons are taken from schedules available from school athletics departments, Athletic.net, and Maxpreps.com.

Recreational league seasons were obtained from league or Sacramento County websites.

<https://www.facebook.com/florinlittleleague2014/>

<https://www.cityofsacramento.org/ParksandRec/Youth-Division/Youth-Sports-and-Summer-Programs/JR-Giants>

<https://www.cityofsacramento.org/ParksandRec/Youth-Division/Youth-Sports-and-Summer-Programs/Middle-School-Sports-Fitness-and-Wellness>

<https://www.sysl.com/schedules>

<https://www.antelopeayso.org/Default.aspx?tabid=863434>

Figure 1 - Summer Windrose - Sacramento Executive Airport

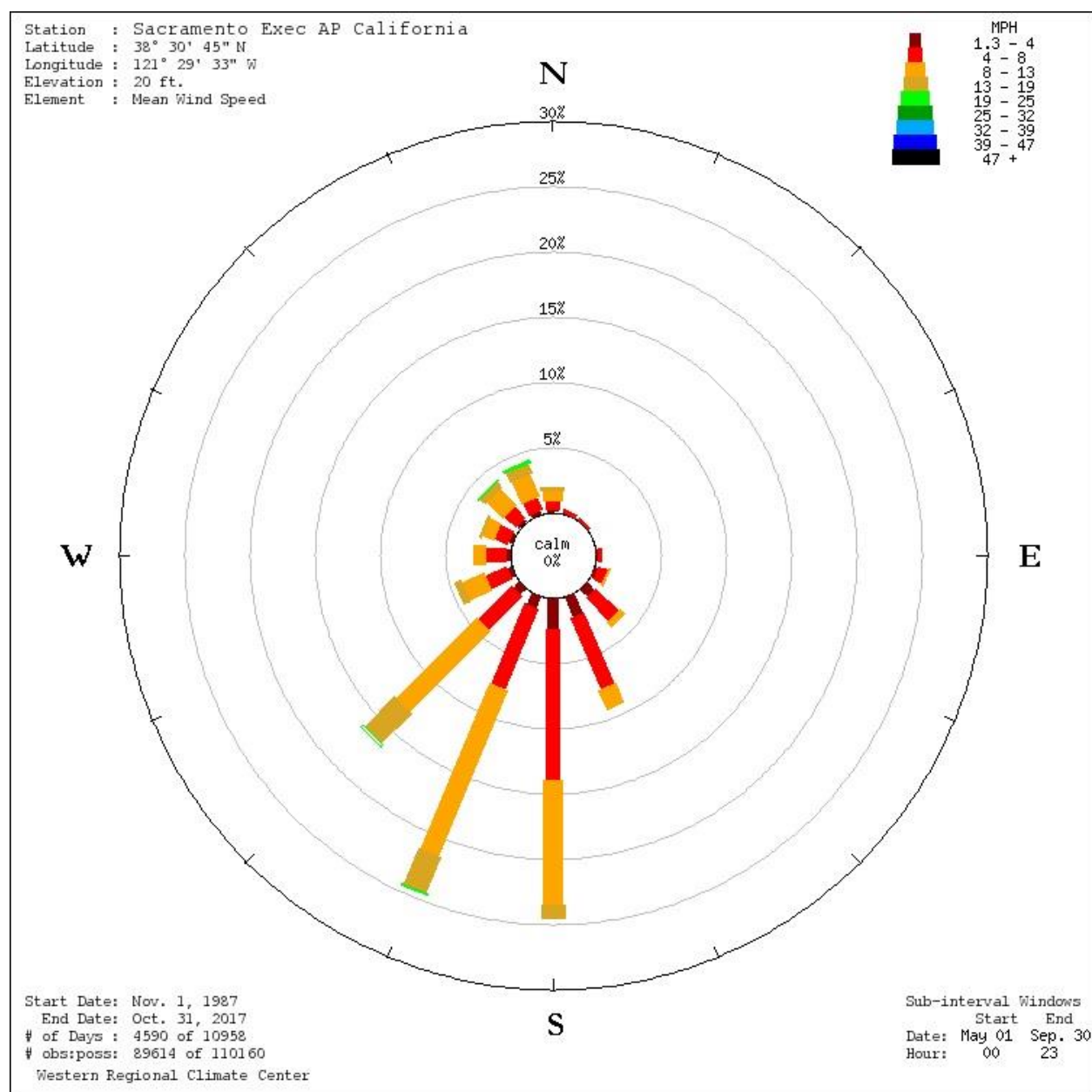


Figure 2 Winter Windrose - Sacramento Executive Airport

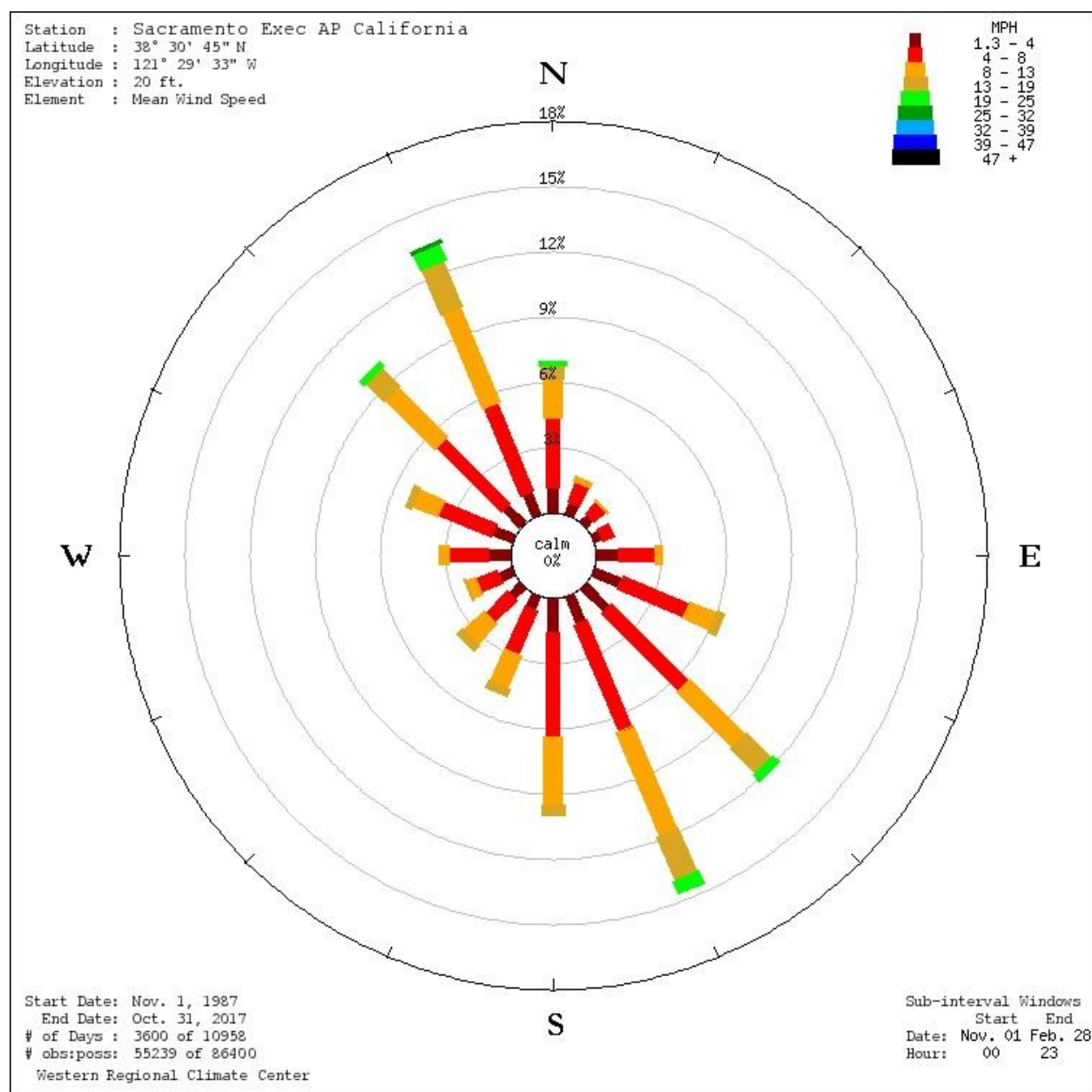
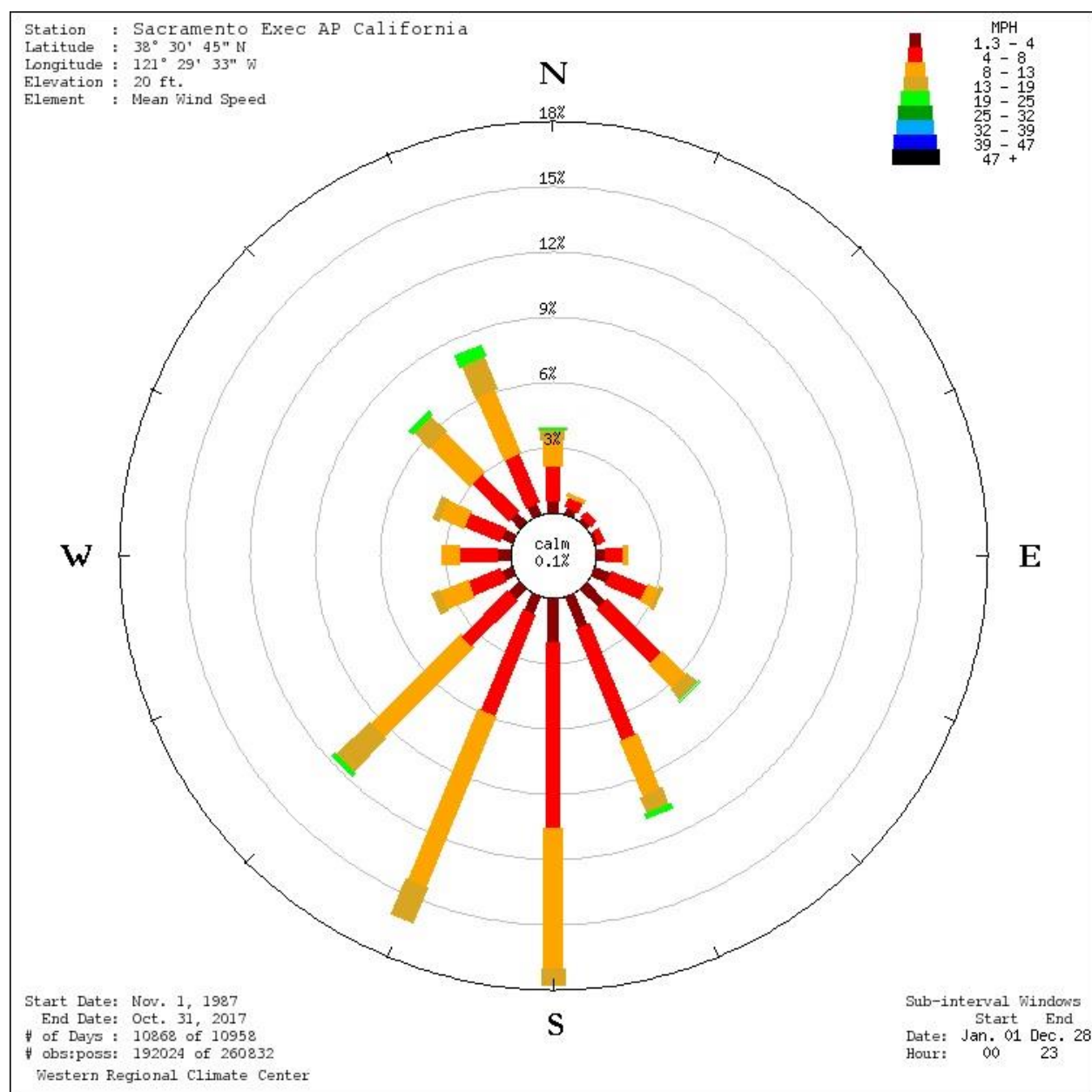



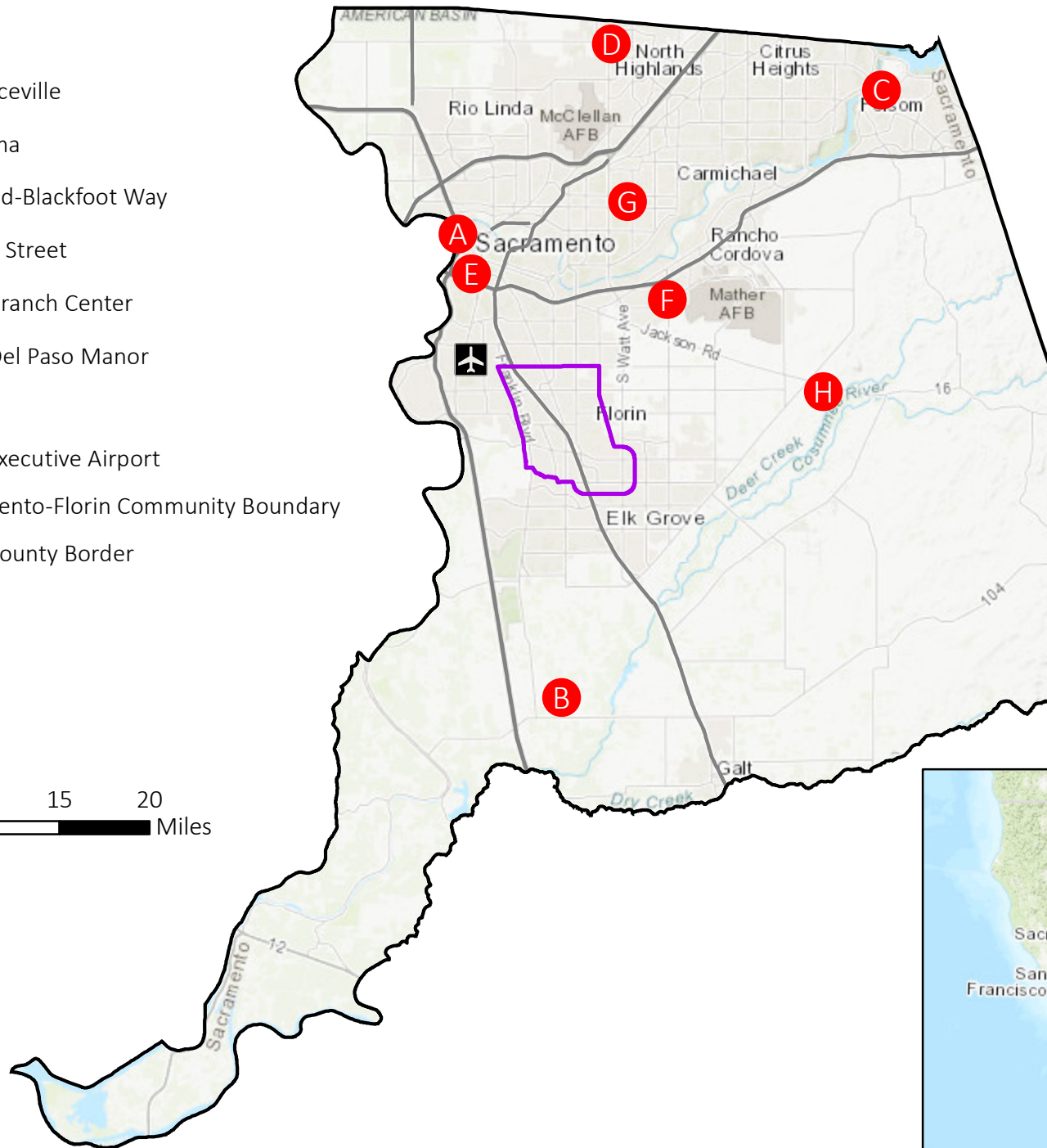
Figure 3 Annual Windrose - Sacramento Executive Airport



Air Monitoring Station Name

- A Bercut Drive
- B Elk Grove-Bruceville
- C Folsom-Natoma
- D North Highland-Blackfoot Way
- E Sacramento-T Street
- F Sacramento-Branch Center
- G Sacramento-Del Paso Manor
- H Sloughouse
-  Sacramento Executive Airport
- South Sacramento-Florin Community Boundary
- Sacramento County Border
- Freeway

0 2.5 5 10 15 20 Miles



South Sacramento -Florin Community – Steering Committee Air Monitoring Exercise
Handout #2
September 24, 2019 Steering Committee Meeting

<p>Pick up to six months for the District to sample during Phase 2?</p> <p>(circle up to six months)</p>	<p>December 2019</p> <p>January 2020</p> <p>February 2020</p> <p>March 2020</p>	<p>April 2020</p> <p>May 2020</p> <p>June 2020</p> <p>July 2020</p>	<p>August 2020</p> <p>September 2020</p> <p>October 2020</p> <p>November 2020</p>
<p>Do you prefer the trailer deployed:</p> <p>a) as soon as possible;</p> <p>b) when all the Phase 2 data is collected; or</p> <p>c) somewhere in between?</p> <p>(pick one, explain c) answers to the right)</p>			
<p>Which month do you prefer for the trailer to be deployed?</p>			
<p>Explain why this is your recommendation.</p>			