

South Sacramento/Florin Community Air Protection

Steering Committee Meeting
Tuesday, June 22, 2021

SACRAMENTO METROPOLITAN



Agenda

6:00 – 6:15 pm	Welcome & Administrative Items
6:15 – 6:20 pm	District Update
6:20 – 6:45 pm	AB 617 Budget Update
6:45 – 7:25 pm	District Outreach Report Back and Discussion
7:25 – 7:40 pm	Wildfire Outreach Update
7:40 – 7:50 pm	New Business and Future Agenda Topics
7:50 – 8:00 pm	Public Comments
8:00 pm	Adjourn

Logistics

- Staff is available if you have technology trouble; please email AB617Clerk@airquality.org
- You can message the host or co-host if you are having technical difficulties.
- During the Steering Committee discussion period or during Public Comment period, each person who wants to speak will need to raise their virtual hand:
 - On Zoom web application – Click either Participants or Reactions, then press “Raise hand”
 - On the phone – Dial *9 to raise your virtual hand.
 - Please state your name and affiliation.
- When you are called – Please unmute yourself on the app or the phone (press *6)
- Email public comments to Clerk of the Committee at AB617Clerk@airquality.org



raise hand

Administrative Items



- 1) Approve previous meeting notes

District Updates (5 minutes)

- Reminder on Annual Required Documents
- July 2021 meeting– Phase 3 monitoring discussion/recommendation

AB 617 Budget Update

(25 minutes)

Statewide AB617 Budget

Agency	FY 17-18	FY 18-19	FY 19-20	FY 20-21	FY 21-22
Program Implementation					
CARB	\$12m	\$15m	\$16m	\$16m	\$16m
South Coast	\$10.8m	\$20m	\$21.9m	\$21.9m	\$21.9m
SJV	\$8.4m	\$12m	\$12.7m	\$12.7m	\$12.7m
Bay Area	\$4.8m	\$10m	\$9m	\$9m	\$9m
San Diego	\$870K	\$2.5m	\$2.3m	\$2.3m	\$2.3m
Imperial	\$30K	\$2m	\$1.85m	\$1.85m	\$1.85m
Sacramento	\$860K	\$1.5m	\$1.25m	\$1.25m	\$1.25m
All Others	\$1.24m	\$2m	\$1.25m	\$1.25m	\$1.25m

Incentive Funding for Clean Air Projects					
South Coast	\$107.5m	\$85.6m	\$93.1m		
SJV	\$80m	\$63.7m	\$67m		
Bay Area	\$50m	\$39.8m	\$35.6m		
San Diego	\$3m	\$18.9m	\$18.8m		
Sacramento	\$3.7m	\$14m	\$6.68m		
Imperial	\$500K	\$7.9m	\$7.1m		
All Others	\$5.3m	\$13.8m	\$12.8m		

Implementation Budget Estimates

Total Need \$4m. State Provides \$1.4m. \$2.6m Deficit (65%)

Tasks	Expenses
CAMP Air Monitoring	\$370K
CAMP & Grant Related tasks	\$380K
Steering Committee Meetings (hosting logistics)	\$130K
Emissions Inventory and Rule Development	\$110K
New AB617 Community Development	\$35K
Administrative and Indirect Costs	\$410K
Total:	\$1.44 million
State funding provided:	\$1.39 million
Local Contribution:	
Outreach Funds	\$25K
Stipend + Supplies	\$20K
Other AB617 Expenditures	\$600K
Additional Funding Gap (example: Emission Reduction Plan, Emission Inventory, Outreach, etc.)	\$1.9million
Total Funding Still Needed:	\$2.6million

OLITAN

The Sac Metro Air District is accepting applications to reduce air pollution from cars, trucks, tractors, buses, and other mobile sources in the Sacramento region. Over \$18 million is available for sole proprietors, community organizations, government agencies, and big and small businesses.

Projects include:

- New, zero emission trucks and buses
- EV charging stations
- Hydrogen fueling stations
- New, clean farm and construction equipment
- Public school filtration systems & lawn and garden programs
- Clean locomotives



Applications are accepted from March 29, 2021 - May 28, 2021

For more information, please visit our website:

<http://www.AirQuality.org/Businesses/Incentive-Programs>



2021 Transportation Incentives

Zero emission heavy duty trucks, school buses, farm equipment, and related fueling infrastructure

District Outreach Report Back and Discussion

(40 minutes)

Outreach

Public Feedback and Awareness Campaign



Wildfire Smoke and Awareness & Safety Campaign

School Districts	Recommended Actions During Wildfire Smoke Events & Unhealthy Air Quality Levels				
An activity is an important consideration for activity, especially during extreme air quality events when poor air quality can be detrimental to student and staff health. The recommended times are based on consultations with state and local health and air quality officials and local school districts.					
ACTIVITY	Level 1 GOOD	Level 2 MODERATE	Level 3 UNHEALTHY FOR SENSITIVE GROUPS	Level 4 UNHEALTHY	Level 5 VERY UNHEALTHY (Health Alert Day)
Recess (15 min)	No Restrictions	Ensure sensitive individuals are not participating in outdoor activities	Sensitive individuals should wear masks indoors or avoid vigorous outdoor activities. Allow individuals who complain of difficulty breathing to avoid strenuous activities.	Sensitive individuals or any individual who complains of difficulty breathing should remain indoors.	No outdoor activity. All activity should be moved indoors or discontinued.
Physical Education Class (30 min)	No Restrictions	Ensure sensitive individuals are not participating in their condition	Sensitive individuals should wear masks indoors or avoid vigorous outdoor activities. Make other arrangements for sensitive individuals.	Exercise indoors or limit vigorous outdoor activity to maximum 15 minutes.	No outdoor activity. All activity should be moved indoors or discontinued.
Asthetic/Promotional Scheduled Sporting Events	No Restrictions	Ensure sensitive individuals are not participating in their condition	Ensure sensitive individuals are not participating in their condition. Reduce air quality measurements to 20 minutes per hour. Consider air quality measurements to lower breathing rates.	Reduce vigorous activities to 20 minutes per hour. Increase rest periods and substitutions to lower breathing rates. Sensitive individuals should remain indoors.	Promotional or event should be rescheduled, moved indoors or discontinued.
Scheduled Outdoor Events	No Restrictions	Ensure sensitive individuals are not participating in their condition	Ensure sensitive individuals are not participating in their condition	Do not conduct all events exceeding 2 hours. Consider rescheduling or relocating event.	Event should be rescheduled, moved indoors or discontinued.
AQ Reporting	0-50	51-100	101-150	151-200	201+
PM 2.5 Range	1-12.5 ug/m3	12.5-15.4 ug/m3	15.5-50.4 ug/m3	50.5-100.4 ug/m3	100.5-300.4 ug/m3

†Sensitive individuals include anyone with asthma or other breathing conditions. Students with asthma should follow their asthma action plan and their school's asthma plan. ††Sensitive groups include children with a respiratory condition (such as asthma) or a chronic condition (such as heart disease) that may be exacerbated by air quality. †††Sensitive individuals include anyone with asthma or other breathing conditions. Students with asthma should follow their asthma action plan and their school's asthma plan.

Dedicated Website For Steering Committee



Multimedia Campaign



Community Engagement Campaign – Meeting format



RFP – Contract with Communication Firm



SACRAMENTO METROPOLITAN



Low-hanging fruit

1. Public Feedback and Awareness Campaign

- Steering Committee can develop survey/s & share results at Steering Committee meetings
- Distribution electronically, printing flyers

From outreach funding: Survey Raffle, any ads, translations, etc.

2. Wildfire Smoke and Awareness & Safety Campaign

- Existing materials being develop that can be distributed
- Develop “sharable” social media material – sample language, etc.
- Make data available on District’s website and CARB data portal

3. Multimedia Campaign

- Share District and CARB – Air quality videos to increase awareness
- Reach out to local news (TV/radio/written interview) to see if there is interest
- Create hashtag (e.g. #LoveMyAirSouthSac, #AB617SouthSac, #HealthyAirSac)

4. Community Engagement Campaign – Meeting format

- Zoom meeting and explore live stream on YouTube livestream
- Encourage community leaders to apply to Steering Committee to receive stipend



The bigger lifts: Further Steering Committee Discussions needed

Create a dedicated Steering Committee website

- **Short term:** *Make minor adjustments and modifications to the District's webpage to make it more community friendly*
- District does not have internal resources/expertise to **create or manage** a new dedicated Steering Committee website for the public

Request for RFP- Contract with a Communication Firm to develop and implement outreach strategies

Suggestion:

- Steering Committee can partner with non-profits 501(c) group to develop outreach projects under Community Air Grant

Questions for the Steering Committee

- What is the most urgent piece to do first?

- What are the next steps?

Wildfire Outreach Update

(15 minutes)

Wildfire Smoke Air Pollution Emergency Plan

June 22, 2021

Presenter: Patrick Guild
Breathe Sacramento



AB 661 Requirements

- Legislation adopted October 2019 as a result of lessons learned after the Camp Fire in 2018
- Need for Local Agency Coordination and Communication
- **Goal:** Develop a coordinated plan that will serve as an information source for local agencies and the public during wildfire smoke events
- **Deliverable:** emergency plan developed by SMAQMD
- **Multi-agency Coordination/Consultation:**
 - County Health Officer
 - Local emergency services
 - School Districts
 - Regional Planning Agency
 - CARB



Specific Plan Elements

1 - Health Protective Recommendations & Guidelines

2 - Identification of Responsible Agencies

3 - Best Practices for Business & Public Agencies

4 - Strategies for Vulnerable Populations

Putting the Plan Into Action!



- **Website Information**
- **5 Steps to Take During Smoke Event**
- **Air Quality Action Charts**
 - For schools
 - For Businesses
 - Public Agencies
- **Advisories/Tools**

TOOLS & ADVISORIES

Guidance for Sacramento County Schools During Wildfire Smoke Events

This information sheet provides resources for school officials to help make decisions about school activities and closures during a wildfire smoke event.



For current information on fires, smoke and air quality, visit EPA's AirNow website at <https://fire.airnow.gov>



For information on local air quality and other wildfire resources, visit Sac Metro Air District's website at AirQuality.org and click on the Wildfire Smoke Information link



To address immediate public health concerns and wildfire smoke, call the Sacramento County Public Health Office at (916) 875-5881



For information on limiting smoke exposure, visit the Sacramento County Public Health Department website and search for Wildfire Smoke Exposure



For general inquiries, call Sac Metro Air District's main line at (916) 874-4800



Smoke Sense

For current smoke and air quality information, download the free EPA Smoke Sense app on Google Play, the App Store and the Windows Store



For current local air quality, download the free Sacramento Region Air Quality App on Google Play, the App Store, and the Windows Store

Activities to **Avoid** During Unhealthy Air Quality Events

During wildfire events and days of high pollution, you can help by avoiding activities that add more smoke or dust into the air we breathe.

Landscaping



Do not use lawn equipment that may put more pollution from motors, dust, or ash into the air.

Postpone or limit dirt-moving activities at construction sites. If a project must continue, make sure to use low speeds and prevent dust with water or other methods.

Construction



Burning



Burning anything, even dry wood in an outdoor fire pit, creates harmful smoke. Visit AirQuality.org to see which burning activities are illegal in Sacramento County.

Avoid any outdoor cooking that produces smoke.

Outdoor Cooking



WHAT TO DO DURING A WILDFIRE SMOKE EVENT

Follow these steps to find air quality conditions and know what actions to take to help keep you and others as healthy as possible during days of high air pollution.

STEP 1

Find the Current Local Air Quality

- Current local air quality conditions: fire.airnow.gov
- Forecasted (Future) AQI: airquality.org

STEP 2

Review Air Quality Action Chart

- Go to the **Wildfire Smoke Info** page at airquality.org
- Find the **Air Quality Action Chart** for your sector

STEP 3

Make Your Plan

- Review the recommended actions on the chart
- Determine what steps you will take
- Make your action plan

STEP 4

Communicate the Plan

- Follow your communication plan
- Alert students, employees, etc. of actions to be taken during the smoke event

STEP 5

Implement the Plan

- Check current air quality at fire.airnow.gov
- Follow through with recommended actions when air quality meets certain levels

SACRAMENTO METROPOLITAN



5 Steps to Take During a Smoke Event

(for schools, businesses, public agencies)



Air Quality Action Chart for Schools

School Districts		Recommended Actions During Wildfire Smoke Events & Unhealthy Air Quality Levels			
Air quality is an important consideration for schools, especially during extreme air quality events when poor air quality can be detrimental to student and staff health. The recommendations below were developed in consultation with state and local health and air quality officials and local school districts.					
ACTIVITY	Level 1 GOOD	Level 2 MODERATE	Level 3 UNHEALTHY FOR SENSITIVE GROUPS	Level 4 UNHEALTHY	Level 5 VERY UNHEALTHY (School closure may be considered ²)
Recess (15 min)	No Restrictions	Ensure sensitive individuals ¹ are medically managing their condition	Sensitive individuals should exercise indoors or avoid vigorous outdoor activities Allow individuals who complain of difficulty breathing to play indoors	Exercise indoors or avoid vigorous outdoor activities Sensitive individuals or any individual who complains of difficulty breathing should remain indoors	No outdoor activity All activity should be moved indoors or discontinued
Physical Education Class (60 min)	No Restrictions	Ensure sensitive individuals are medically managing their condition	Sensitive individuals should exercise indoors or avoid vigorous outdoor activities Make indoor space available for sensitive individuals	Exercise indoors or limit vigorous outdoor activity to maximum 15 minutes Sensitive individuals or any individual who complains of difficulty breathing should remain indoors	No outdoor activity All activity should be moved indoors or discontinued
Athletic Practice/ Scheduled Sporting Events	No Restrictions	Ensure sensitive individuals are medically managing their condition	Ensure sensitive individuals are medically managing their condition Reduce vigorous exercise to 30 minutes per hour Increase rest periods and substitutions to lower breathing rates	Reduce vigorous exercise to 30 minutes per hour Increase rest periods and substitutions to lower breathing rates Sensitive individuals should remain indoors	Practice or event should be rescheduled, moved indoors or discontinued
Scheduled Outdoor Events	No Restrictions	Ensure sensitive individuals are medically managing their condition	Ensure sensitive individuals are medically managing their condition	Decrease duration of events exceeding 2 hours Consider rescheduling or relocating event	Event should be rescheduled, moved indoors or discontinued
AQI Reading ³	0-50	51-100	101-150	151-200	≥201
PM 2.5 Range	1-12.0 µg/m ³	12.1-35.4 µg/m ³	35.5-55.4 µg/m ³	55.5-150.4 µg/m ³	150.5 -250.4µg/m ³

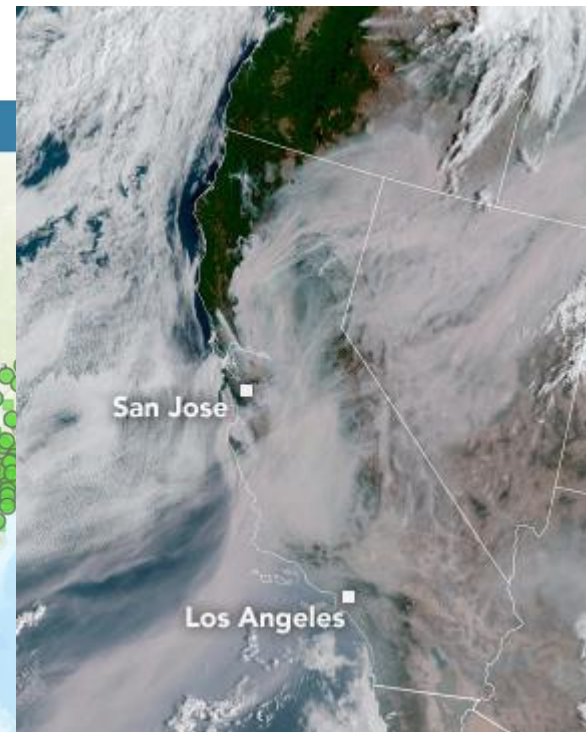
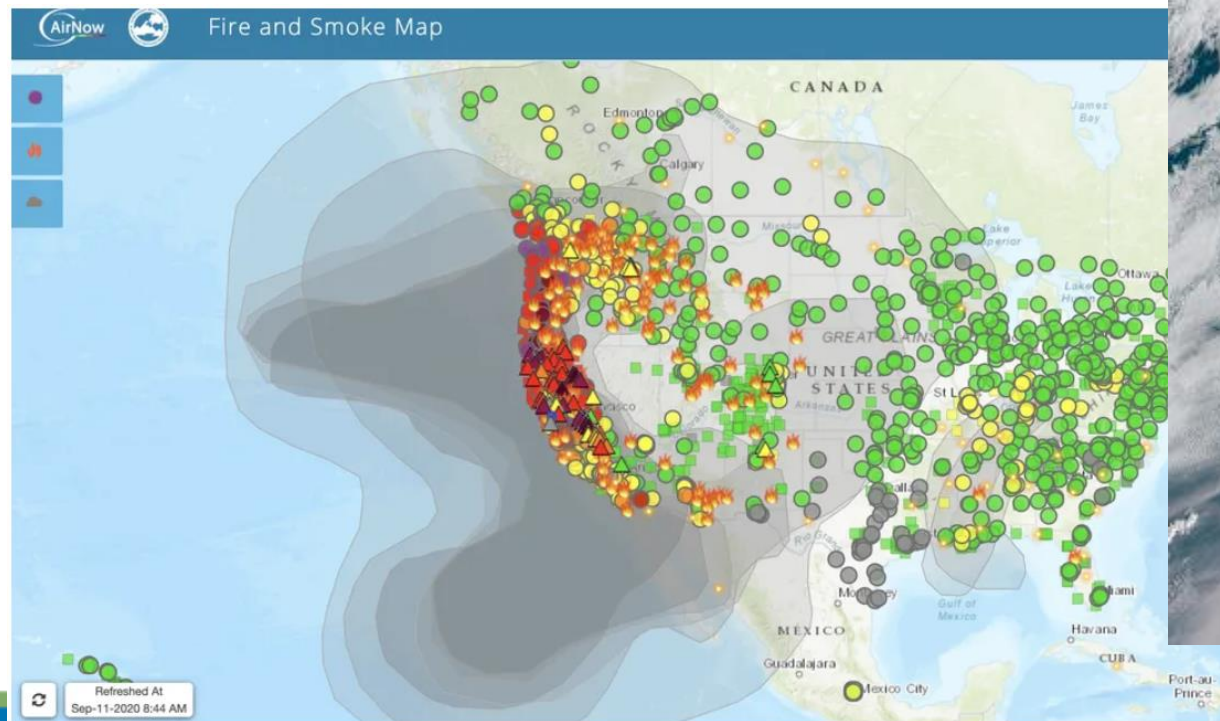
¹ Sensitive individuals include anyone with asthma or other heart/lung conditions. Students with asthma should follow their asthma action plans and keep their quick-relief medicine handy.

² To meet waiver approval conditions due to emergency conditions (Form J-13A) from the State Superintendent of Public Instruction, poor air quality must be shown to be caused by an emergency event such as a wildfire.

³ Recommended actions should be followed when the AQI for any pollutant (ozone, PM_{2.5} and PM₁₀) exceeds 100. AQI readings and other info are found at AirQuality.org and SpareTheAir.com.

WHERE DO YOU GET AIR QUALITY INFO?

Air Now Fire & Smoke Map (fire.airnow.gov)



New Business and Future Agenda Topics

(10 minutes)

July Agenda Topics

Tentative Agenda Items?

Steering Committee Discussion/Recommendation for Phase 3 location

Steering Committee Meeting Schedule/Timelines

Create Subgroup/s Discussion or any Subgroup follow-ups

Potential Additional/Future Topics

Discussion with Elected Officials (Depending on availability)

Next Steps/Emission Reduction Solutions (Pre-CERP) discussion:

- a) Emission reduction strategies & solutions
- b) Subgroup?

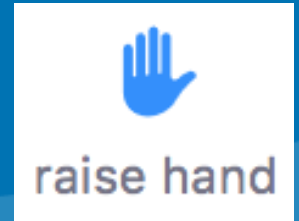
Partnership building: City planning? County Planning?
Health care? Education? Industry? Transportation?

Urban Heat Island presentation

Public Comments

(10 minutes)

- To participate, please raise your virtual hand:
 - On Zoom web application – Please press “Raise your virtual hand button” under the Reactions button.
 - On the phone – Dial *9 to “Raise your virtual hand button.”
 - Please state your name and affiliation.
- When you are called – Please unmute yourself on the app or the phone (press *6)



Adjourn

Next Meeting Date: Tuesday, July 27, 2021