

Community Air Protection Program and Clean Air Investments

June 21, 2018

South Oak Park Community Association Meeting

Janice Lam Snyder

Air Monitoring, Planning and
Data Analysis

Jaime Lemus

Transportation and
Climate Change

Purpose: Identify local air pollution impacts & invest state dollars to reduce local emissions to improve air quality in our communities

AB 617 Community Air Protection

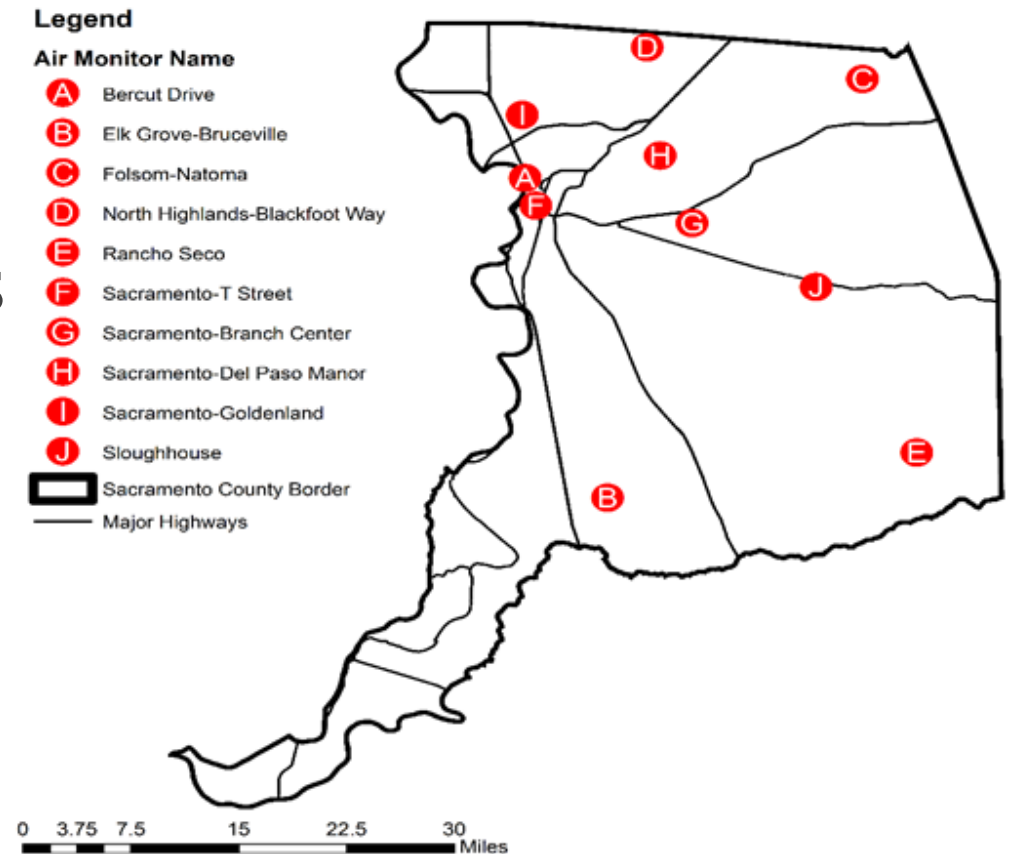


AB 134 Community Investments



Motivation for AB 617 & AB 134

- Historical focus on regional air quality, significant improvements
- Need for community-level focus
- Advances in technology
- Bring funding into communities to effectively reduce localized emissions



Key Community Elements

A rounded square icon with a blue sky and white clouds background. The text "Community- Level Air Monitoring" is written in bold black font.

Community- Level Air Monitoring

Identify local emissions and
monitor for progress



Invest in clean air technology
to improve air quality

Community-Level Air Monitoring



Examples of different options for community level air monitoring due to advances in technology



Residence Backyards

How To Get These Programs Into Your Community

- **The California Air Resources Board, State Agency (CARB) selects communities and investments, local air districts implements**



Provide Community Feedback

JUNE & JULY 2018

**Sac. Metro Air District
Recommend Communities
& Investments to State**

JULY 31, 2018

How Did We Determine Areas With Highest Cumulative Air Pollution Impacts?



Exposure to Air Pollution

- Concentrations of criteria and toxic air pollutants
- Density and magnitude of industrial emission sources



Sensitive Receptors

- Proximity to mobile and stationary sources of concern (parks, schools, hospitals)



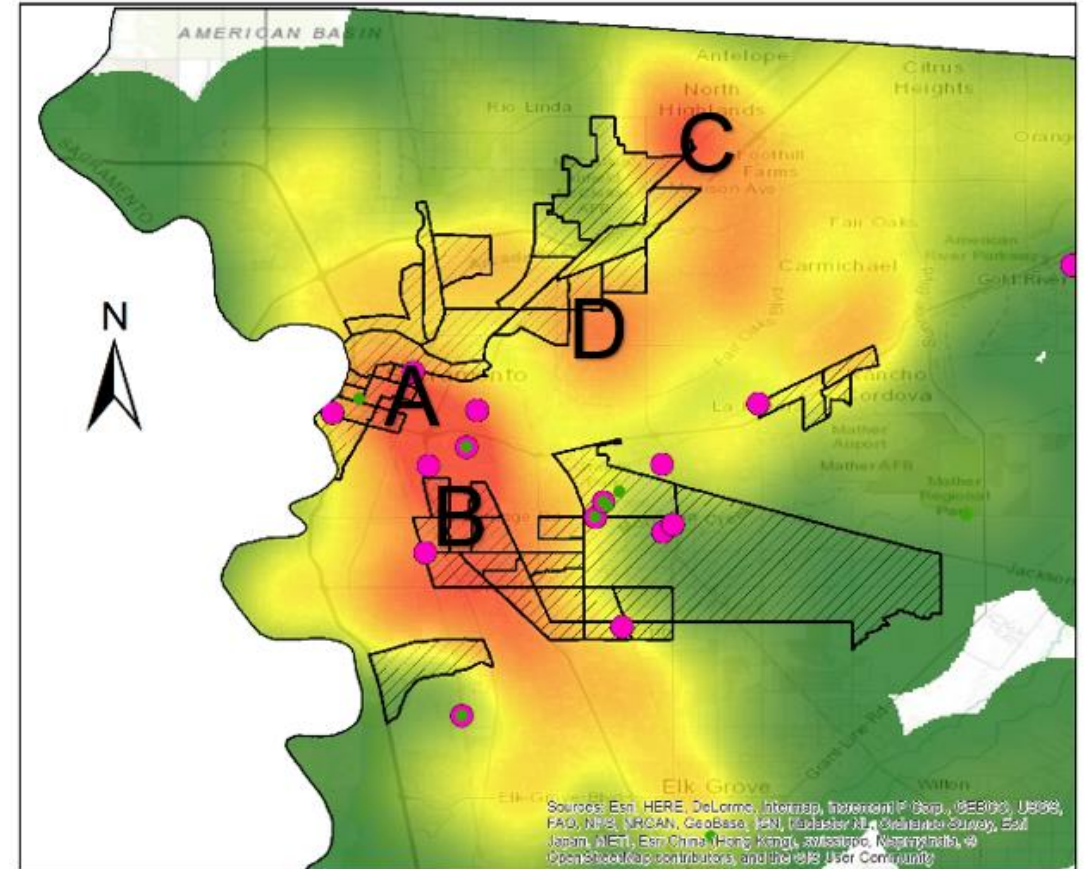
Sensitive Population

- Socio-Economic (Low Income Communities)
- Public Health Indicators (Sacramento County Health Needs Assessment)



Question for the Community:

- Any other factors to consider?
- Should all of these factors be weighted equally?

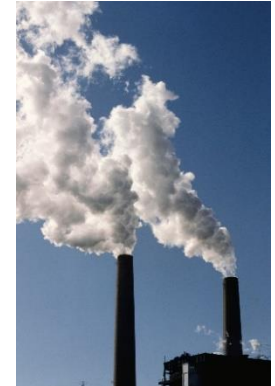


*Dark red indicate areas of greater impacts

Question for the Community

What Air Pollution Sources Are You Most Concerned About ?

Regionally, transportation (cars, trucks, buses, equipment, locomotives, etc.) is the source of most pollution

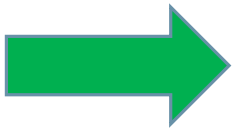


Clean Air Investments



District Incentive Programs (FY18/19)

| Allowable Project Uses | Estimated Sacramento region investment |
|---|--|
| Scrap & Replace, Car Share, Ride Hail | \$7-12 million |
| Tractor Replacement, Alternative Fuels, Locomotives & Infrastructure | \$5-6 million |
| On-Road Heavy Duty Farm Trucks, Off-Road Agriculture Vehicles | \$2 million |
| Alternative Fuels, Locomotives, Infrastructure, Tractor Replacement | \$4 million |
| Zero Emission Infrastructure, School Bus, Transit Bus, Vocation and Delivery Trucks | \$8-12 million |
| TOTAL | Up to \$36 million |



Information & Next Steps

- **Keep informed** – Visit our Community Air Protection webpage
 - <http://www.airquality.org/Air-Quality-Health/Community-Air-Protection>
- **Survey- tell us your community's air quality priorities**
 - Link under “Upcoming Meetings and Workshops”
- **State** will select priority communities for monitoring by September 2018 and Clean Air Investments by June 2019

Contact Information

Janice Lam Snyder, Program Manager
(916) 874-4835
jlam@airquality.org

Jaime R. Lemus, Program Manager
(916) 874-2911
jlemus@airquality.org