

Community Air Protection (AB 617) Year 3 Community Boundary

(October 1, 2020)

Each year of the AB 617 program, the Sacramento Metropolitan Air Quality Management District (District) has an opportunity to update community area recommendations to the California Air Resources Board (CARB) for consideration to be part of the statewide Community Air Protection (CAP) program. This year, the District proposes to prioritize three general community areas based on the updates to the District's analysis:

- North Sacramento
- Oak Park/Fruitridge
- Meadowview

The District would like to get your suggestions to help propose initial boundaries for these communities. Your suggestions will be considered for the District's Year 3 community recommendation to CARB's CAP program. We are providing the following maps to help you draw your suggested boundary areas:

- Attachment 1: Map showing the most impacted communities based on the District's analysis (Top 5 Percent)
- Attachment 2: This map shows the census tracts in the top 10 percent and may help you recommend boundaries for the three community areas (Top 10 Percent).
- Attachment 3: North Sacramento Map
- Attachment 4: Oak Park/Fruitridge Map
- Attachment 5: Meadowview Map

Note: The colored areas reflect census tracts and is not intended to be a starting boundary.

Please draw your suggested boundary areas on Attachments 3, 4 and/or 5 and submit by **October 23, 2020**. The documents must be received by the District by the deadline date to be considered for the District's Year 3 community recommendation to CARB.

To submit your boundary maps via email, send to CommunityAirProtectionMonitoring@airquality.org with subject line: "Boundary Map." Photos of the maps are accepted and welcomed.

If you would like to submit your boundary map by mail, you can send it to: Mark Loutzenhiser, Sacramento Metropolitan Air Quality Management District, 777 12th St, 3rd Fl, Sacramento, CA 95814, or it can be dropped off at the District's office.

For additional information or questions on the submittal, please send contact:
CommunityAirProtectionMonitoring@airquality.org

Thank you for your feedback!

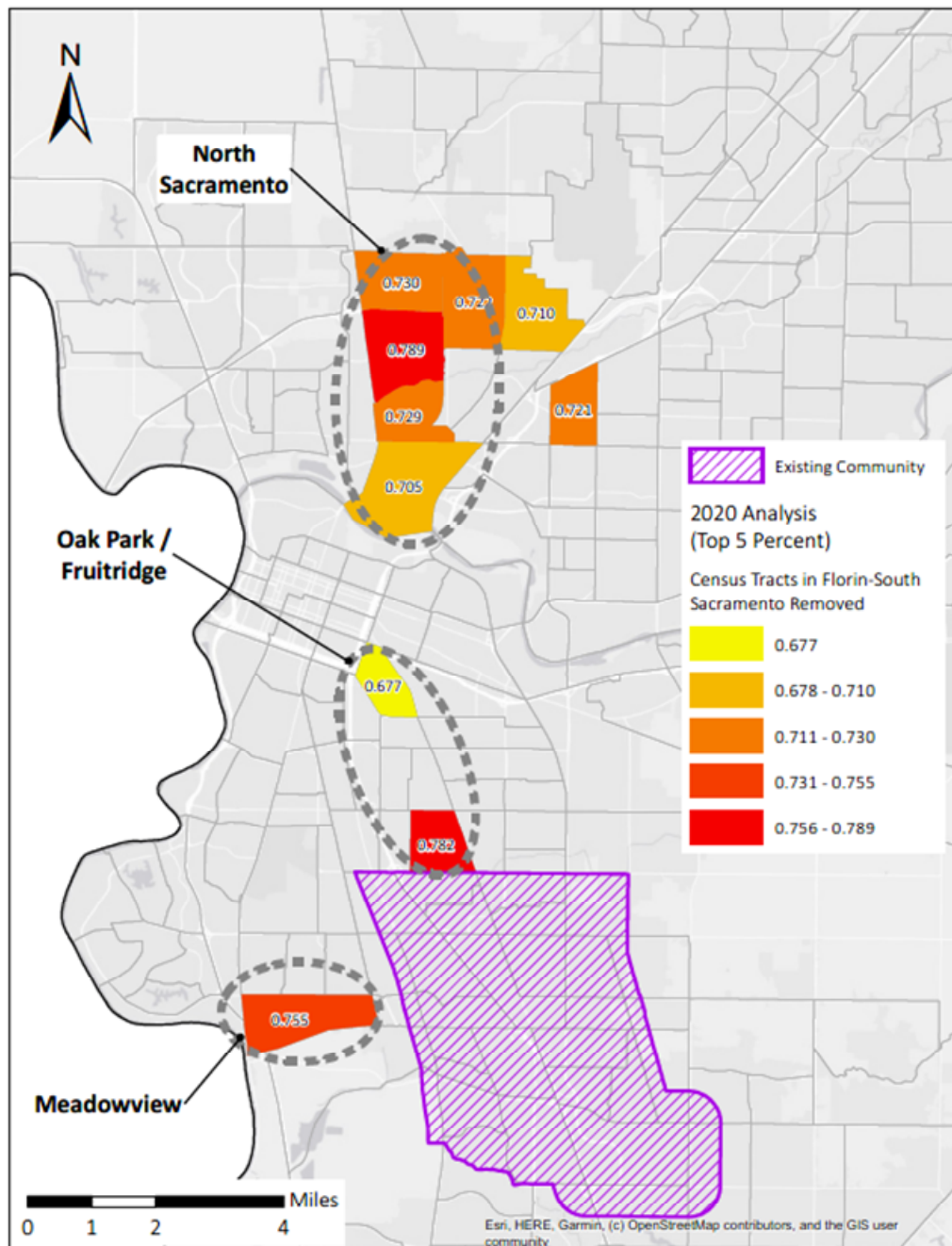
Sacramento Metropolitan Air Quality Management District
777 12th St., 3rd Floor
Sacramento, CA 95814
(916) 874-4800



Attachment 1: Top 5 Percent Map

Below is a map of the census tracts that ranked in the top 5 percent of the District's analysis. There are three general community areas that are being recommended this year to participate in the CAP program.

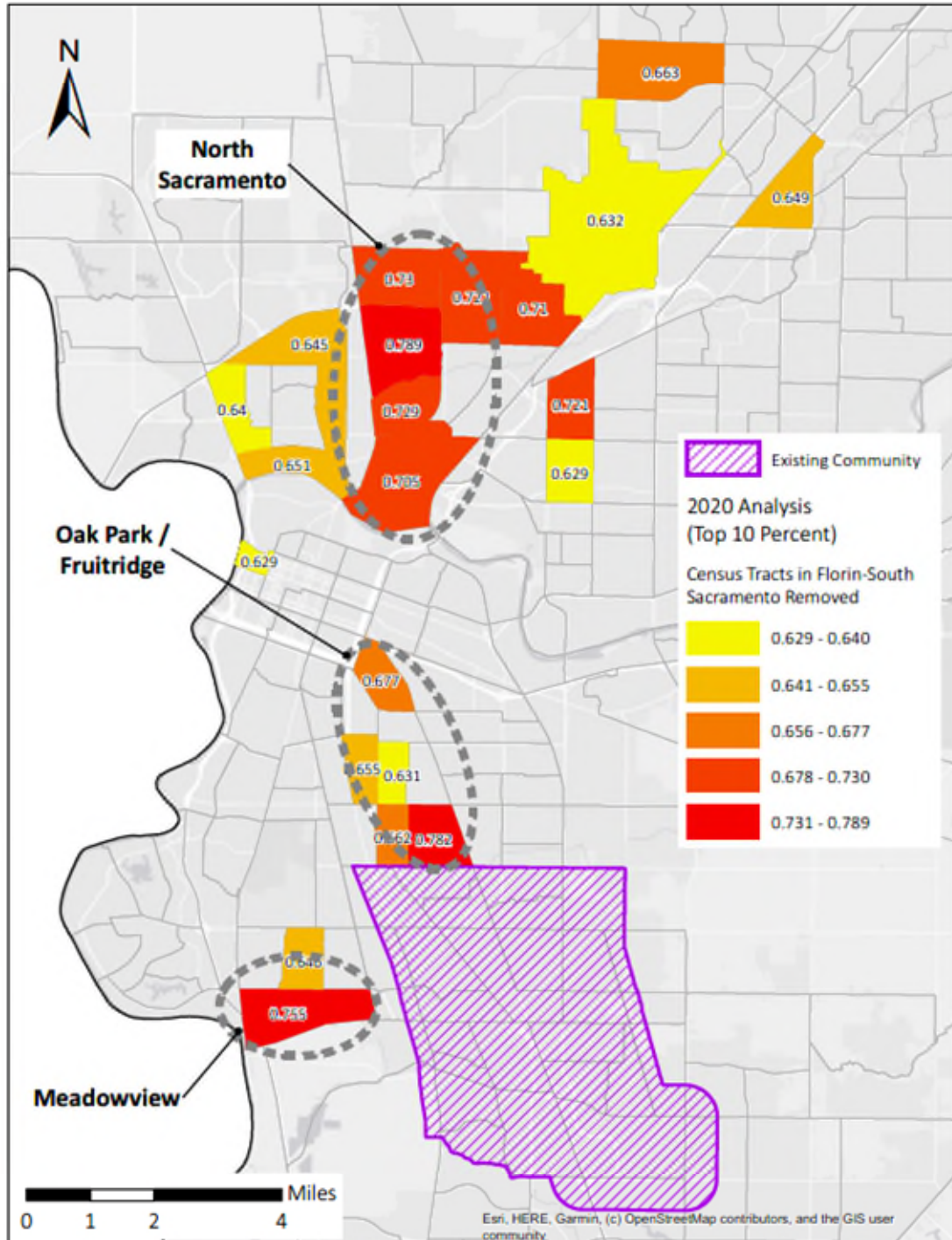
- North Sacramento
- Oak Park/Fruitridge
- Meadowview



Sacramento Metropolitan Air Quality Management District
777 12th St., 3rd Floor
Sacramento, CA 95814
(916) 874-4800

Attachment 2: Top 10 Percent Map

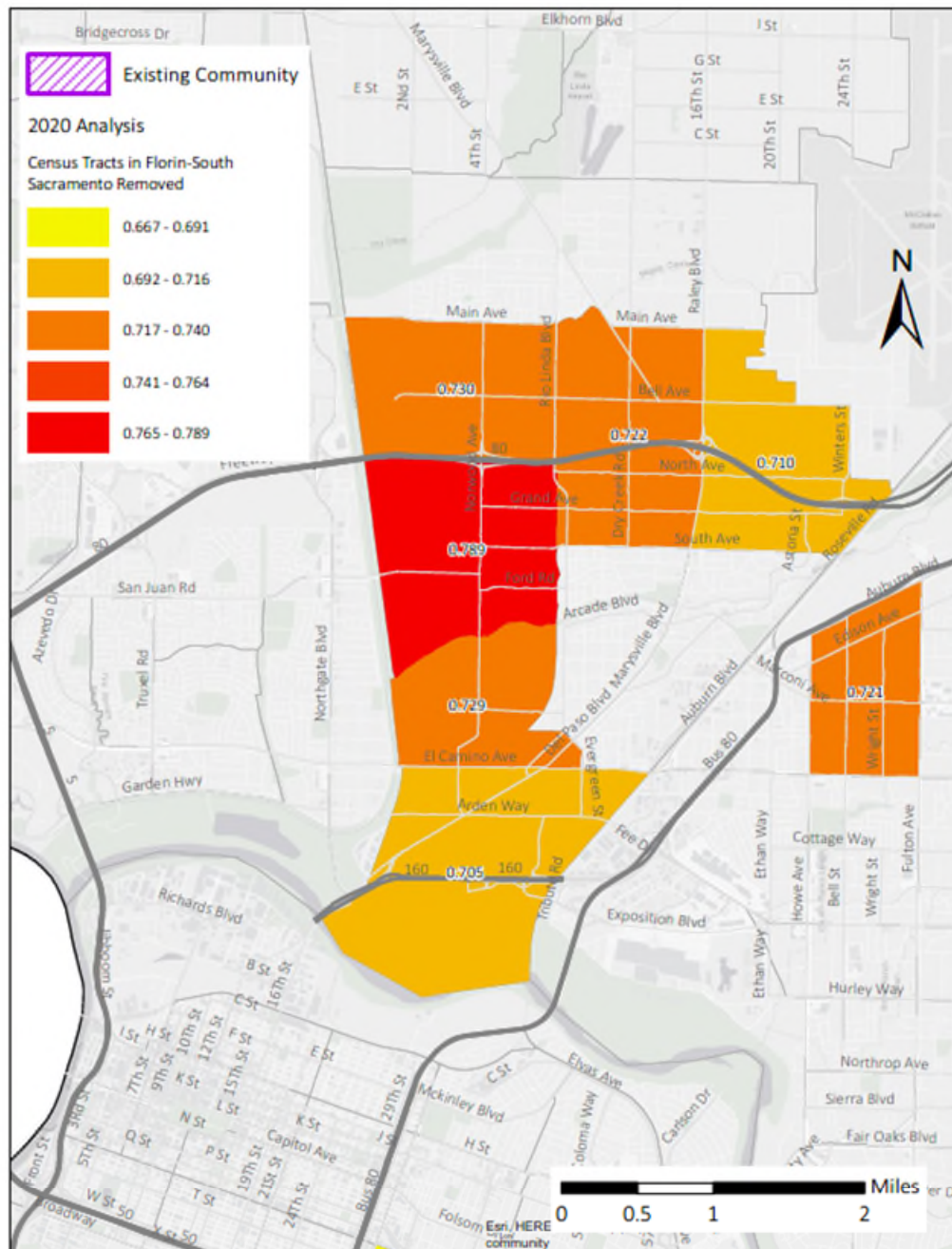
Below is a map of the census tracts in Sacramento County that ranked in the top 10 percent of the District's analysis. This map is provided as informational only to help you determine specific boundaries for the three community areas.



Sacramento Metropolitan Air Quality Management District
777 12th St., 3rd Floor
Sacramento, CA 95814
(916) 874-4800

Attachment 3: North Sacramento Map

Below is a map showing the census tracts that ranked in the top 5 percent of the District's analysis within the North Sacramento community area. Please draw your recommended community boundary line below.

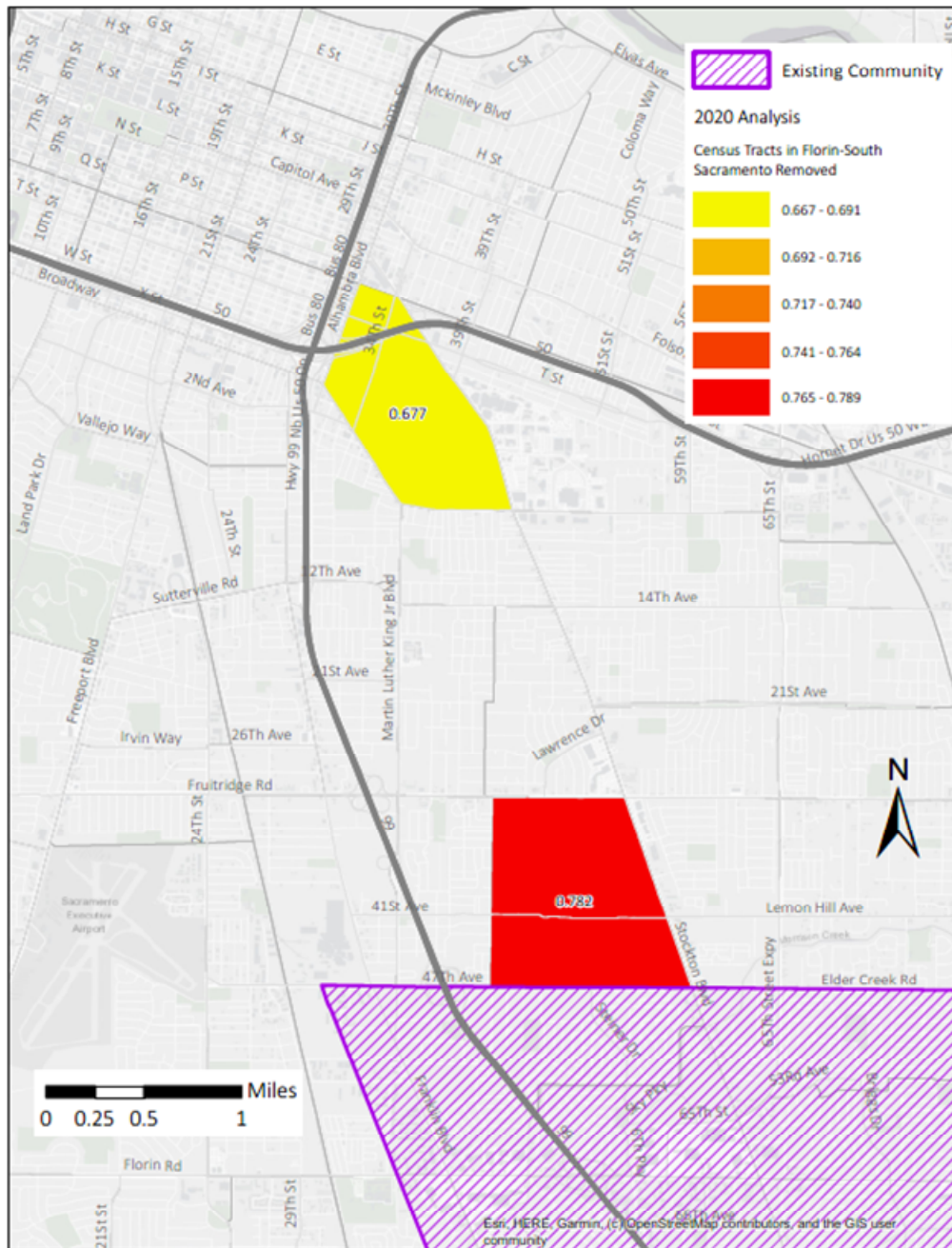


Optional: Any additional information you would like to provide that you would like to be considered. For example, why you drew the boundary where you did? Are there particular areas or sensitive groups you are concerned about within your proposed boundary? What community name would you suggest for this area?

Sacramento Metropolitan Air Quality Management District
777 12th St., 3rd Floor
Sacramento, CA 95814
(916) 874-4800

Attachment 4: Oak Park/Fruitridge Map

Below is a map showing the census tracts that ranked in the top 5 percent of the District's analysis within the Fruitridge/Oak Park community area. Please draw your recommended community boundary line below.

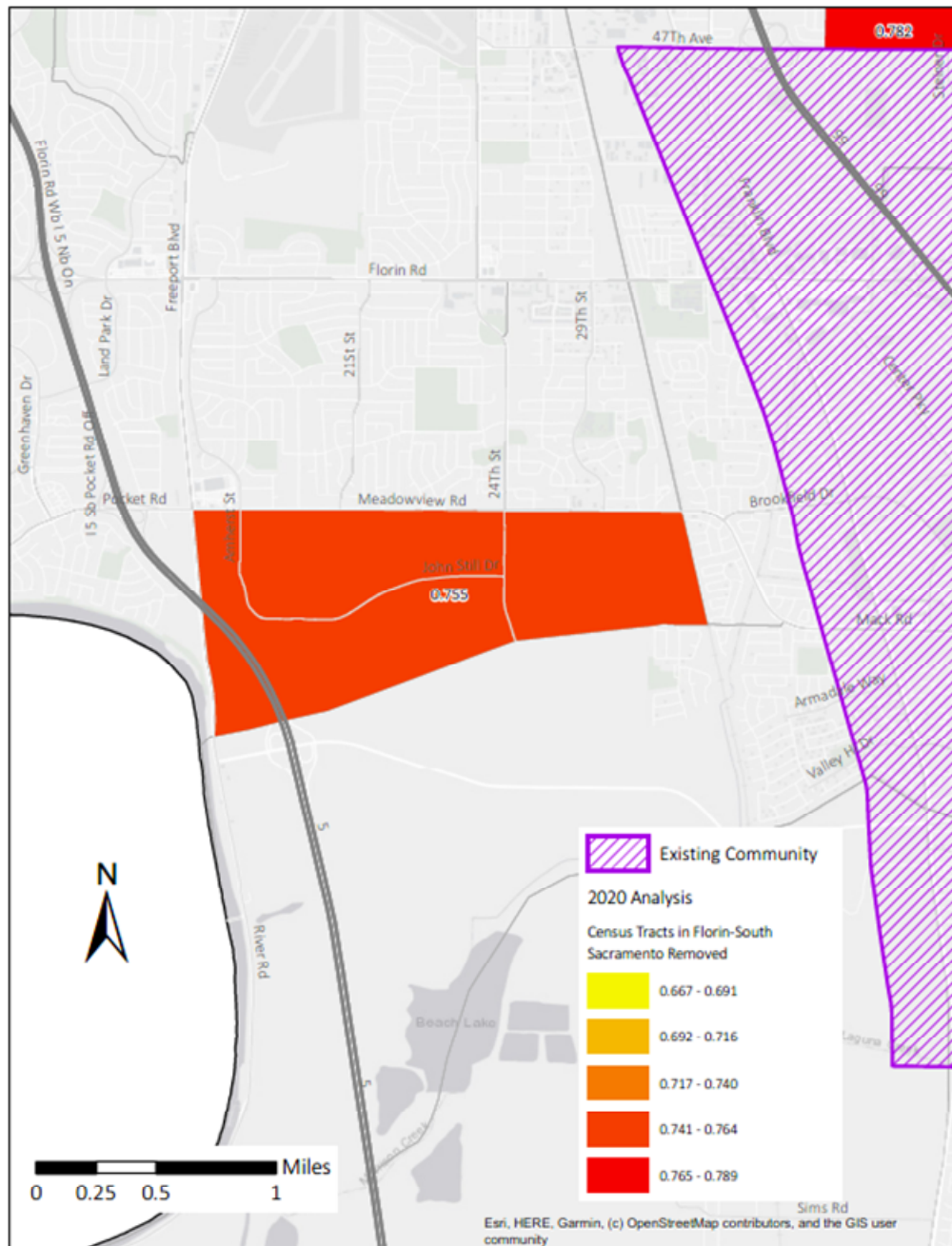


Optional: Any additional information you would like to provide that you would like to be considered. For example, why you drew the boundary where you did? Are there particular areas or sensitive groups you are concerned about within your proposed boundary? What community name would you suggest for this area?

Sacramento Metropolitan Air Quality Management District
777 12th St., 3rd Floor
Sacramento, CA 95814
(916) 874-4800

Attachment 5: Meadowview Map

Below is a map showing the census tracts that ranked in the top 5 percentile of the District's analysis within the Meadowview community area. Please draw your recommended community boundary line below.



Optional: Any additional information you would like to provide that you would like to be considered. For example, why you drew the boundary where you did? Are there particular areas or sensitive groups you are concerned about within your proposed boundary? What community name would you suggest for this area?

Sacramento Metropolitan Air Quality Management District
777 12th St., 3rd Floor
Sacramento, CA 95814
(916) 874-4800