

Air District Rules & Permitting

CSC Meeting
February 24, 2025

SACRAMENTO METROPOLITAN



Air District Rules

- Rules and Regulations are created to **protect public health**
- **92 regulations** currently exist that are *specific to our District*
- Existing rules are **reviewed regularly** for updates
 - Changes in technology
 - New state or federal guidance
 - Need for meeting new federal health standards
- Amending rules is a viable CERP strategy
- Amending a rule ranges from **6-18 months**
- The Air District Board makes **final decision** in rule changing.



Two “Types” of Rules

1. General rules

Apply to **businesses** that emit air pollution

- Who needs a permit?
- What requirements apply? (New or Modified Sources)



2. Prohibitory rules

Apply to new and existing **source types** of air pollution for example:



Gasoline

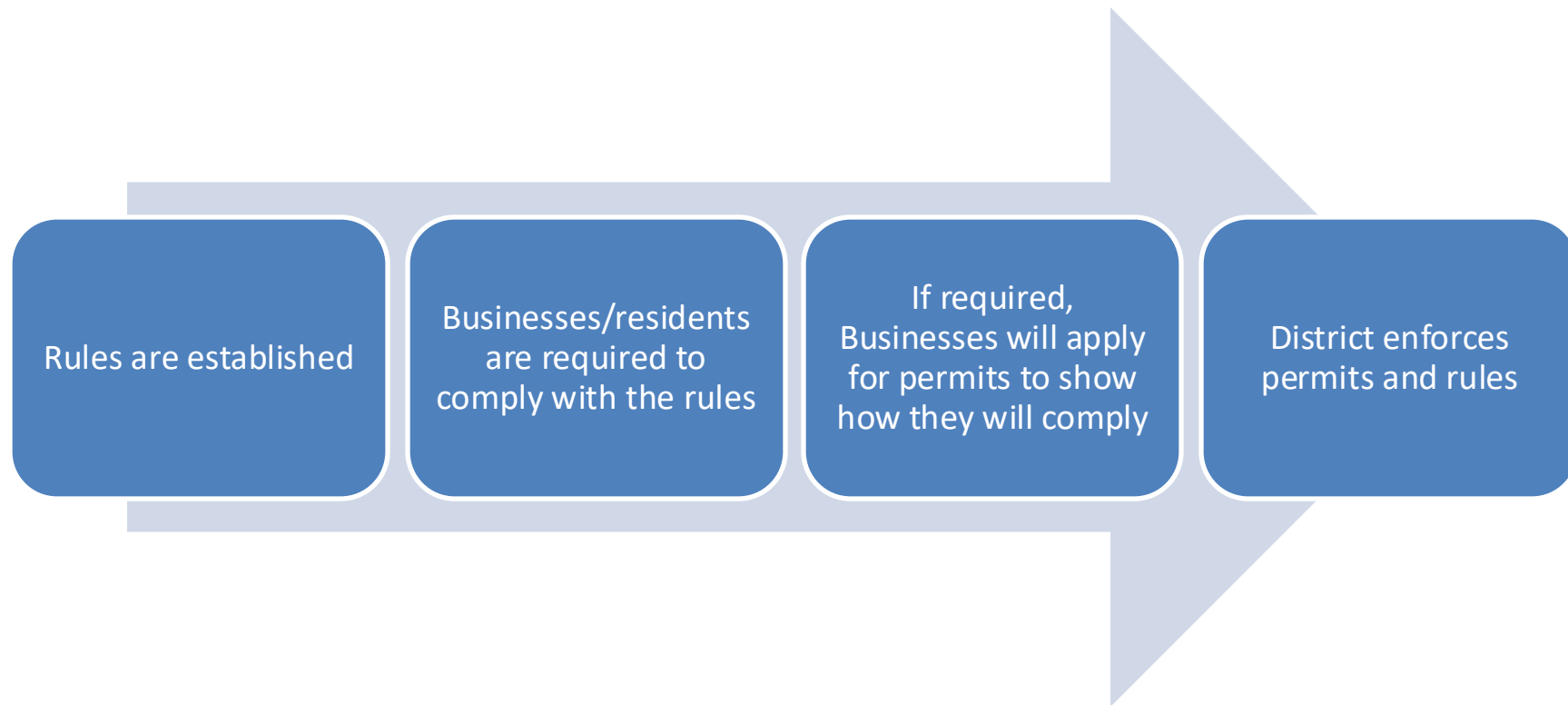


Automotive Coating



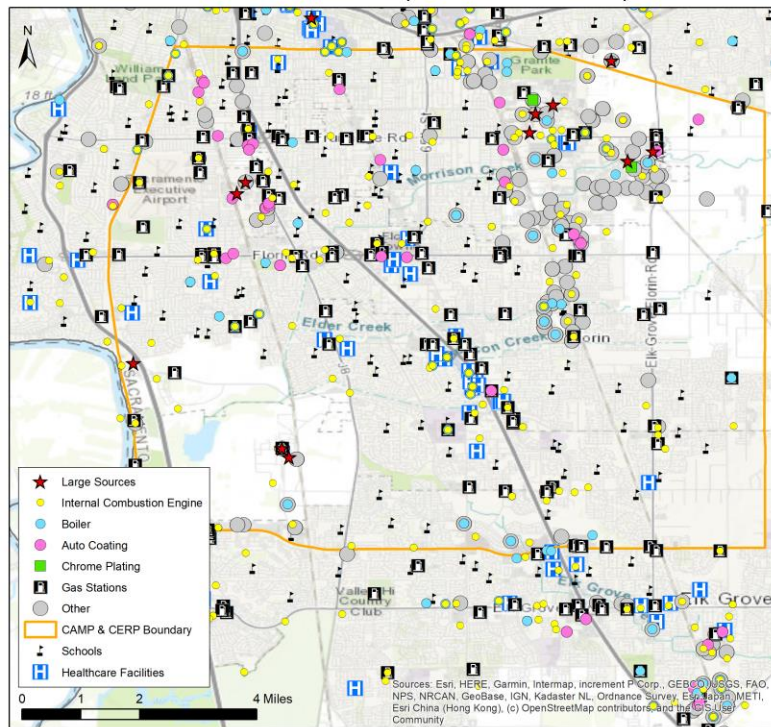
Boilers

Connecting Rules and Permits

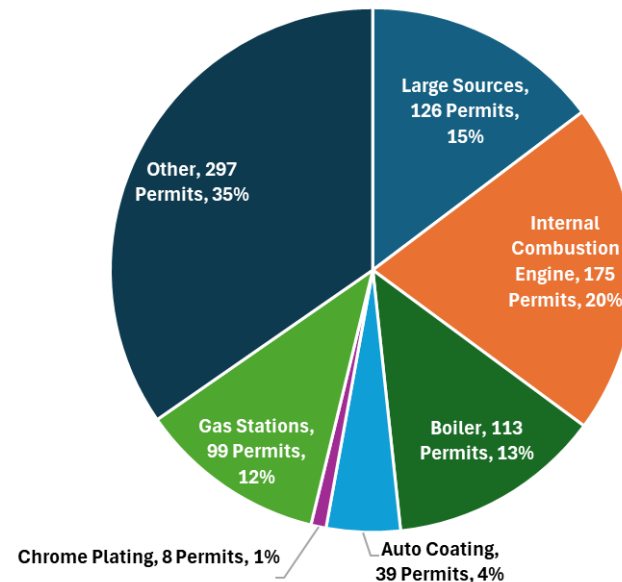


What's permitted in your community?

Permitted Sources (as of 12/12/2024)



Number of Community Permits by Source Type



857 Permits in the Community

Types of CERP Measures from Other Communities

- Communities that adopted rules were specific to their pollution sources (i.e. refineries, ports, etc.) and did not apply to Sacramento
- Indirect Source Rule (ISR) has come up with other CERPs and mentioned in the CERP Subcommittee

Rules

Permitting
Process

New or amended rules that reduce emissions

Focus on reducing non-mobile diesel engine emissions and evaluate cleaner technologies

Provide additional assistance to businesses that need a permit

Provide more training and education to businesses on clean technologies and compliance

Engagement