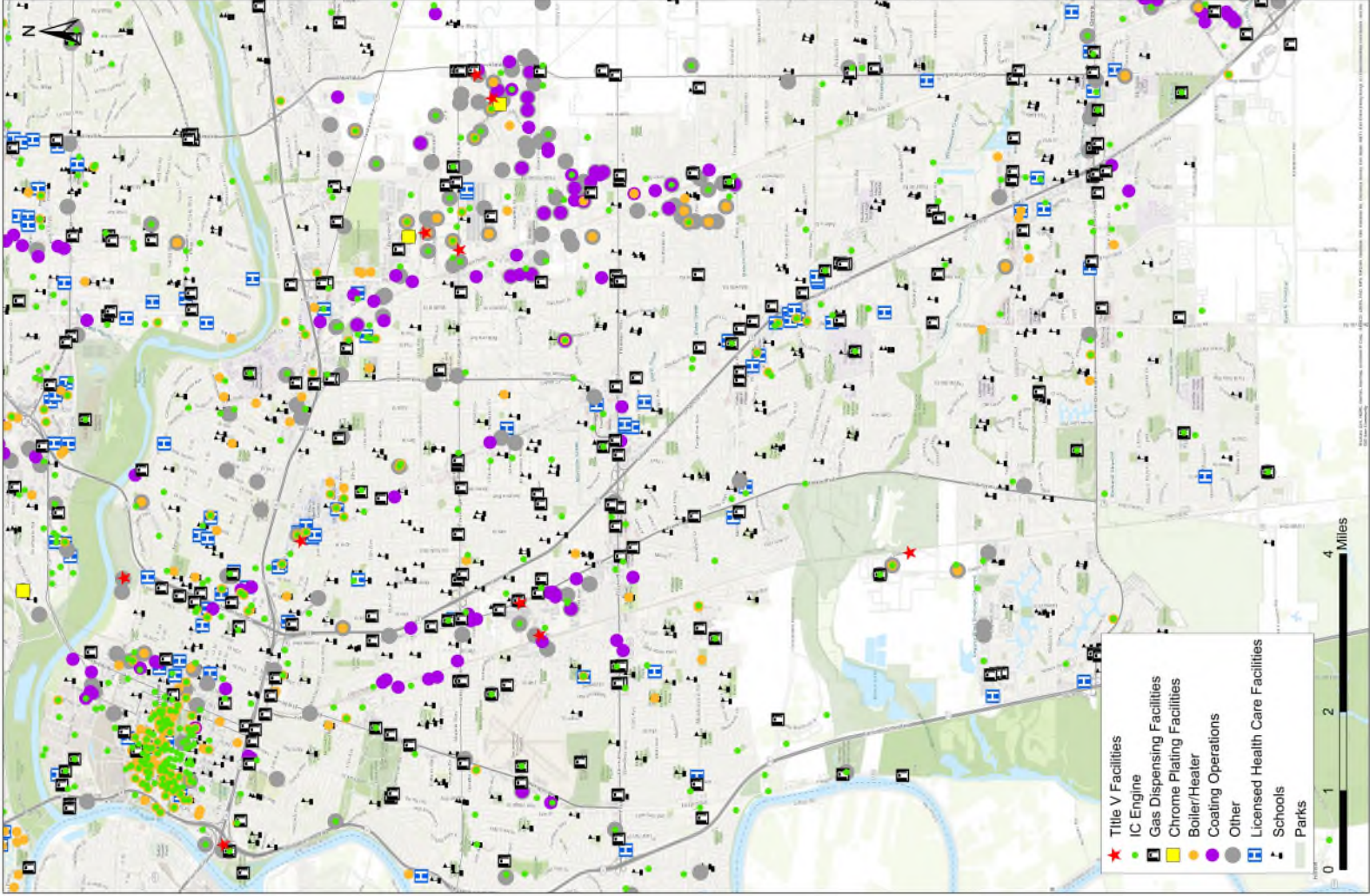


Map for Boundary Discussion



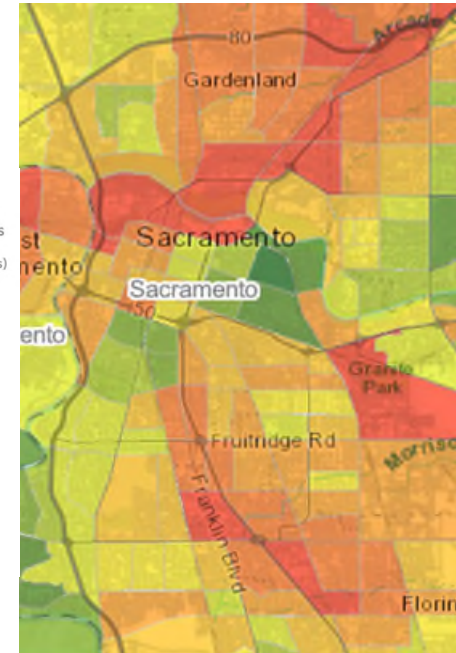
California Communities Environmental Health Screening Tool (CalEnviroScreen 4.0)

Pollution Burden	Population Characteristics
<ul style="list-style-type: none">• <u>Ozone</u>• <u>PM_{2.5}</u>• <u>Diesel Particulate Matter</u>• Drinking water contaminants• Lead risk from Housing• Pesticide Use• Toxic Releases from Facilities• Traffic Impacts• Cleanup Sites• Groundwater Threats• Hazardous Waste• Impaired Waters• Solid Waste Sites	<ul style="list-style-type: none">• Asthma• Cardiovascular Disease• Low Birth Weight• Education• Housing Burden• Linguistic Isolation• Poverty• Unemployment

Pollution Burden x Population Characteristics

=

Overall
CalEnviroScreen Score



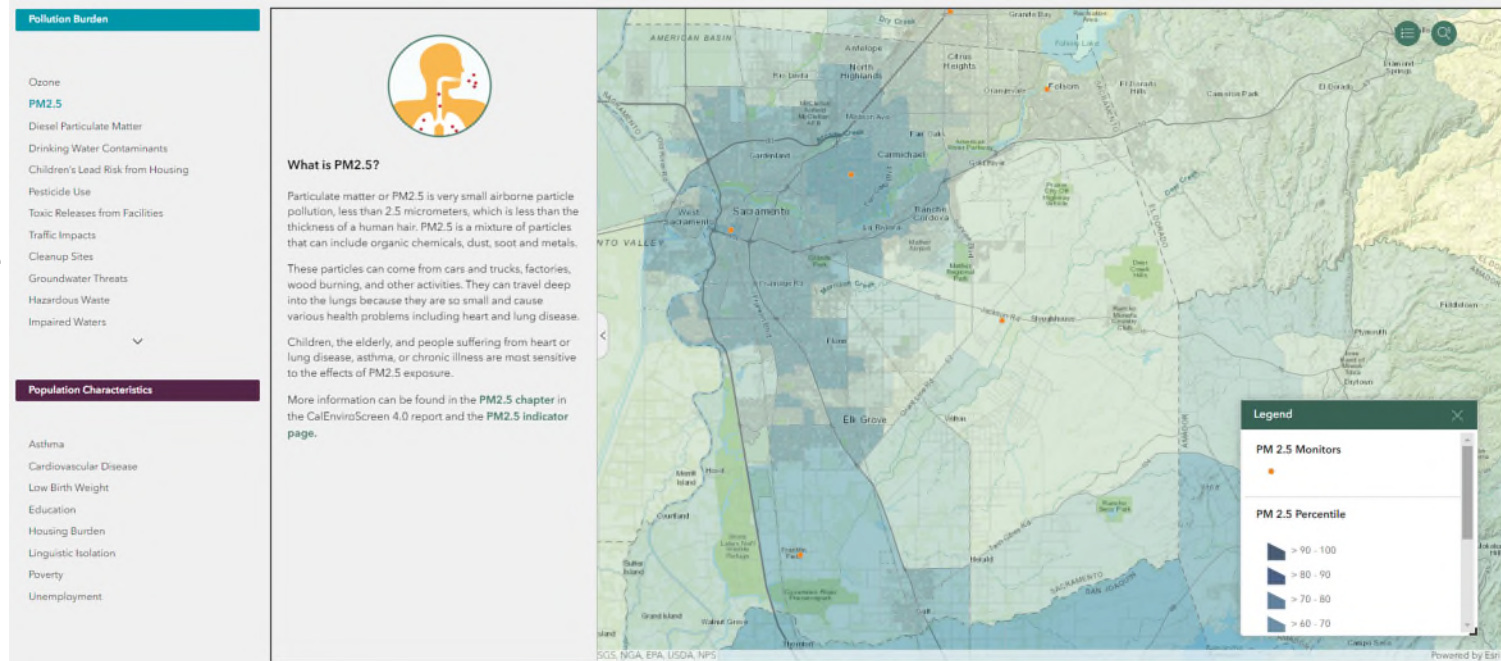
SACRAMENTO METROPOLITAN



CalEnviroScreen Air Pollution Indicators

Indicator Maps

- Ozone
- PM_{2.5}
- Diesel Particulate Matter



SACRAMENTO METROPOLITAN

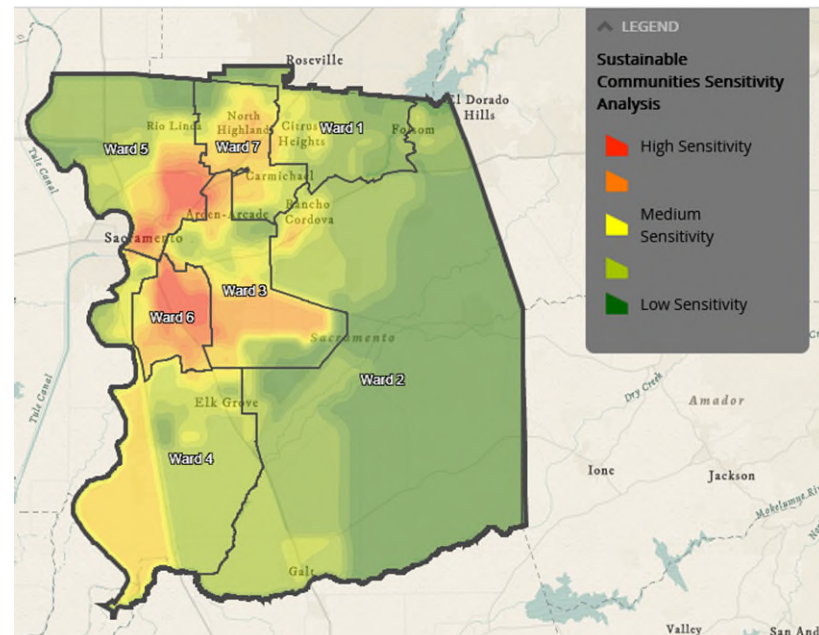


SMUD Sustainable Communities Resource Priorities Map

Identifies local areas most likely to be underserved

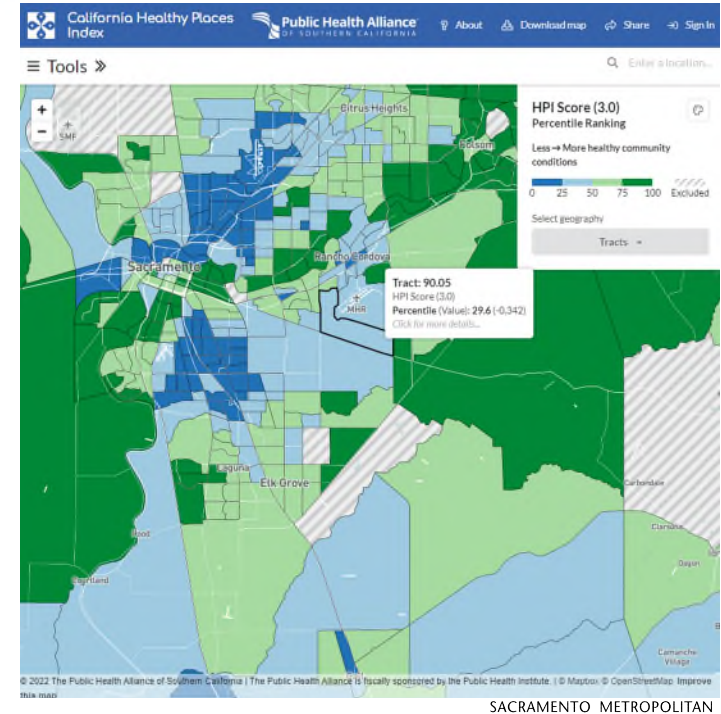
Includes maps of:

- Sacramento Promise Zones
- Disadvantaged communities
- Federal Poverty Level
- Medically underserved areas
- Health equity areas
- Social Vulnerability Index
- CalEnviroScreen 3.0



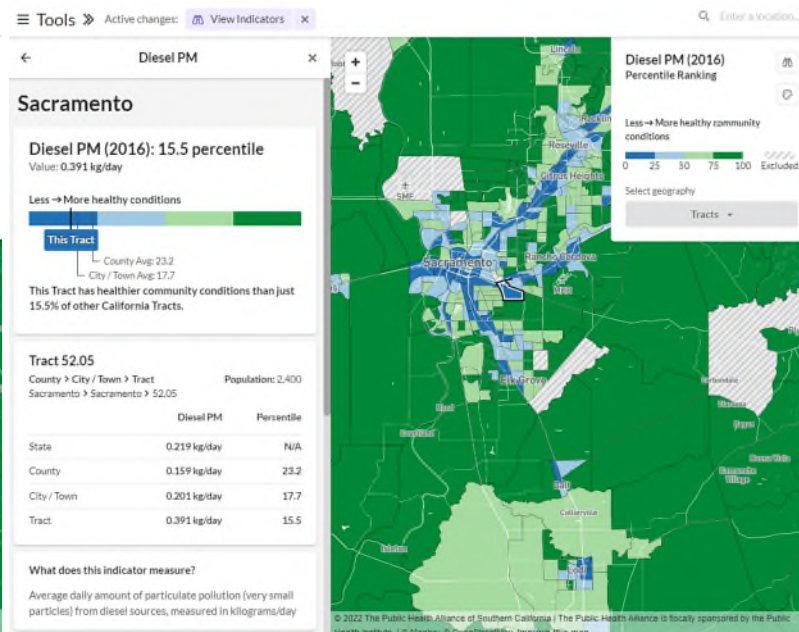
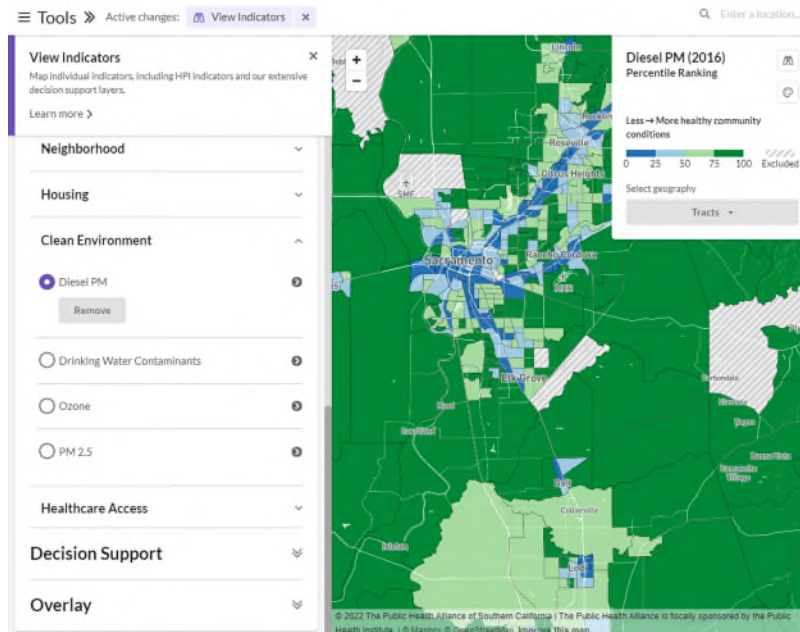
California Healthy Places Index (Public Health Alliance of Southern California) (HPI)

- Evaluates relationship between 23 identified key drivers of health and life expectancy at birth (LEB) divided into 8 policy action areas:
 - Economic
 - Education
 - Social
 - Housing
 - Transportation
 - Neighborhood built-environment
 - **Clean Environment**
 - Healthcare access
- Score divided into four colors (less to more) and show the relative impact (“ranking”) of conditions in a selected area compared to all areas in the state



Healthy Places Index Air Pollution Indicators

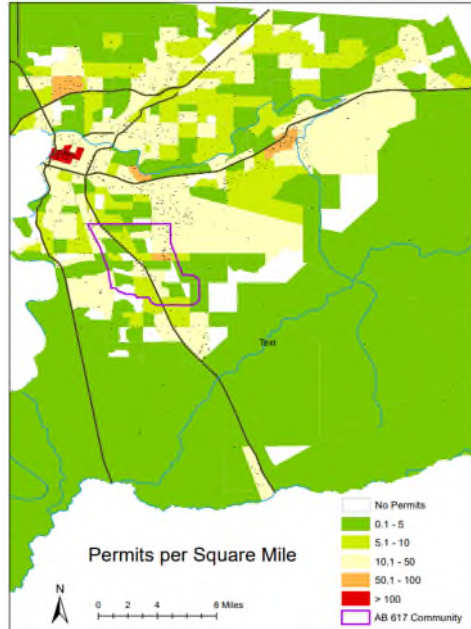
- Ozone
- PM_{2.5}
- Diesel Particulate Matter



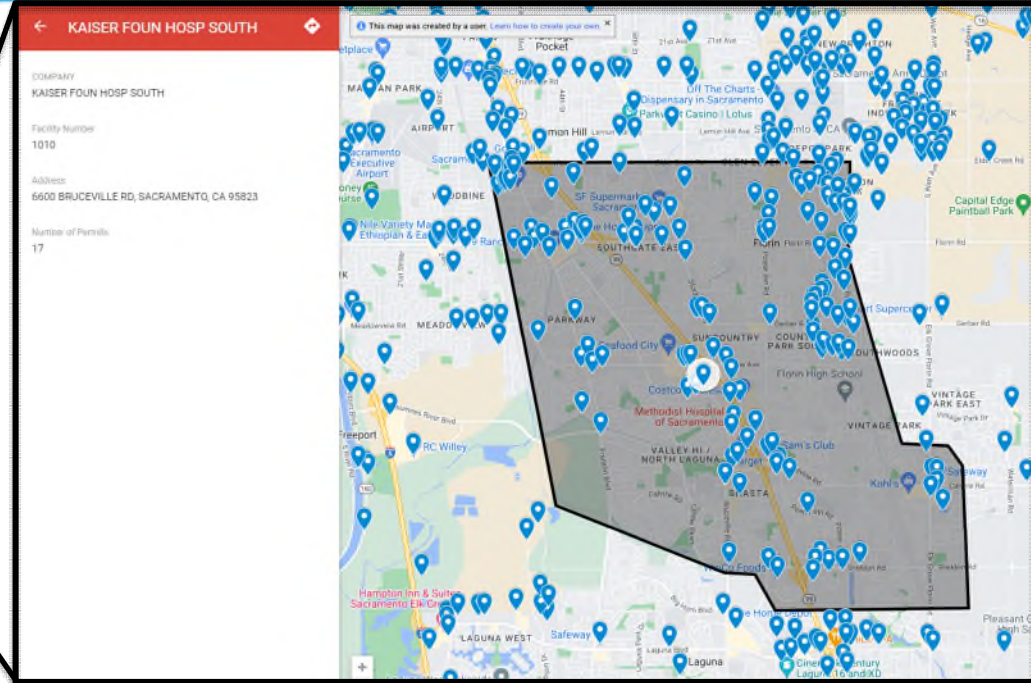
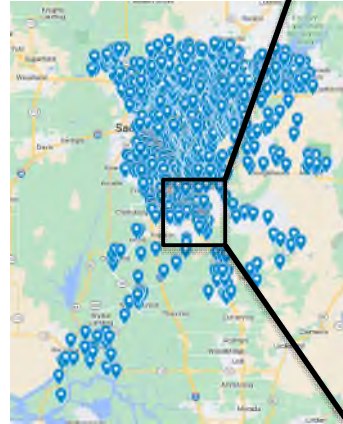
SACRAMENTO METROPOLITAN



Air Quality Permitted locations in Sacramento County



Permit Density Map



Permitted Facility Locations

SACRAMENTO METROPOLITAN



California Air Toxics Assessment (CATA)

Modeling and Meteorology Branch / AQPSD/CARB

California Air Toxics Assessment (CATA)

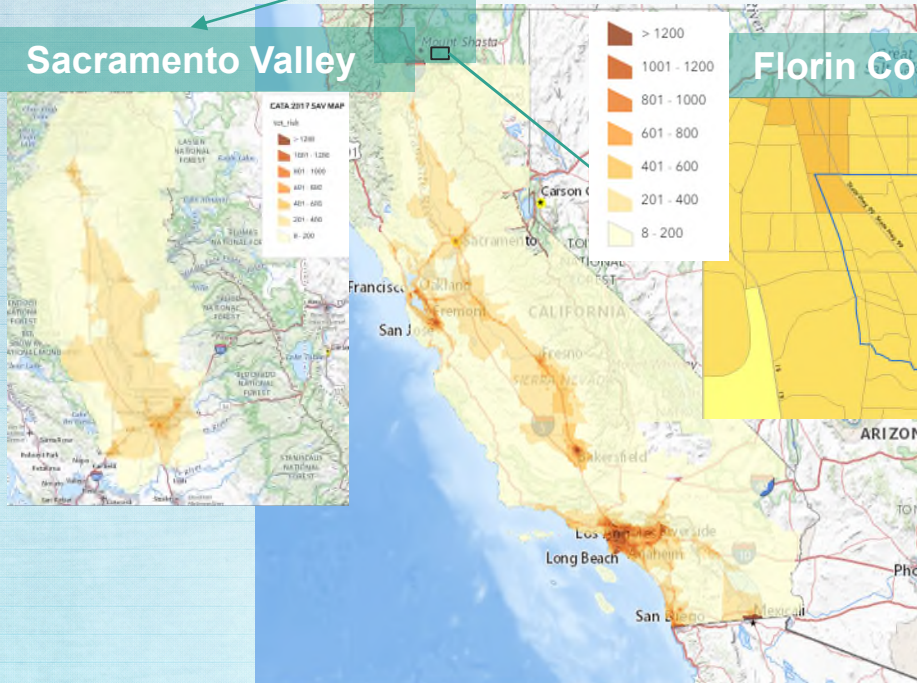
- **What is CATA:**
 - Assess major toxic air pollutants, their emissions sources statewide, and associated health risks
 - Bridging assessment scales: connecting national to regional evaluations
- **Why is CATA:**
 - Enhance CARB's Air Toxics Program (AB1807, AB2588, AB617)
 - Support AB617 and Environmental Justice efforts
 - Facilitate rule-making, strengthen programs and agency support
 - Support **CalEnviroScreen** and complement to the existing monitoring network
 - Track health risk reduction trend over time statewide
- **Cautionary use:**
 - View the data in relative terms, such as risk percentiles, rather than absolute values.
 - CATA results should not serve as the sole basis for making decisions related to air quality, health risks, or legal matters.

CATA Results Displayed on Various Spatial Scales

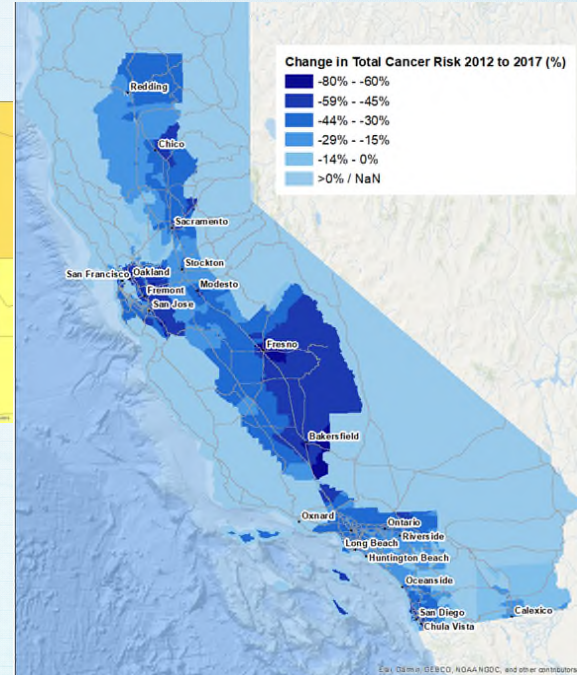
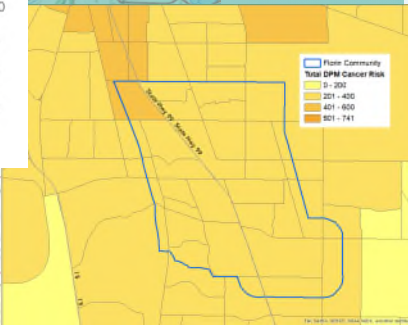
Total Cancer Risk for 2017 (per million)

Total Risk change from 2012 to 2017 in %

Sacramento Valley

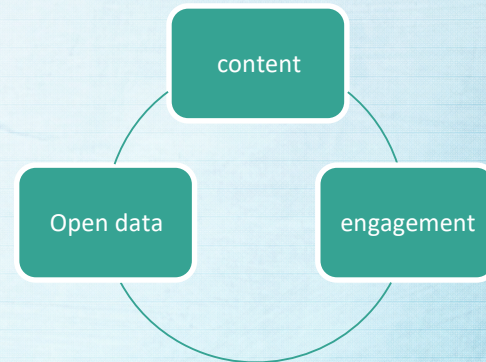
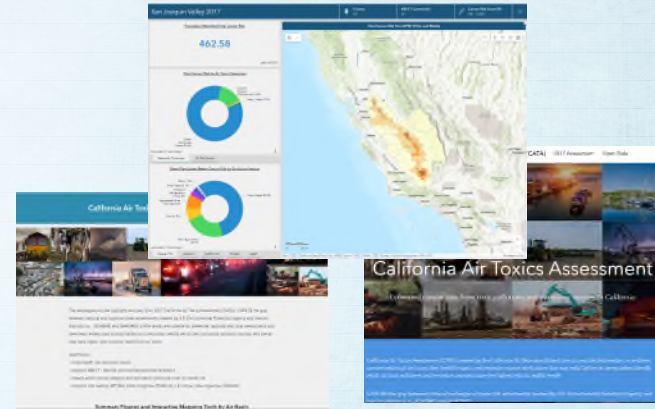


Florin Community

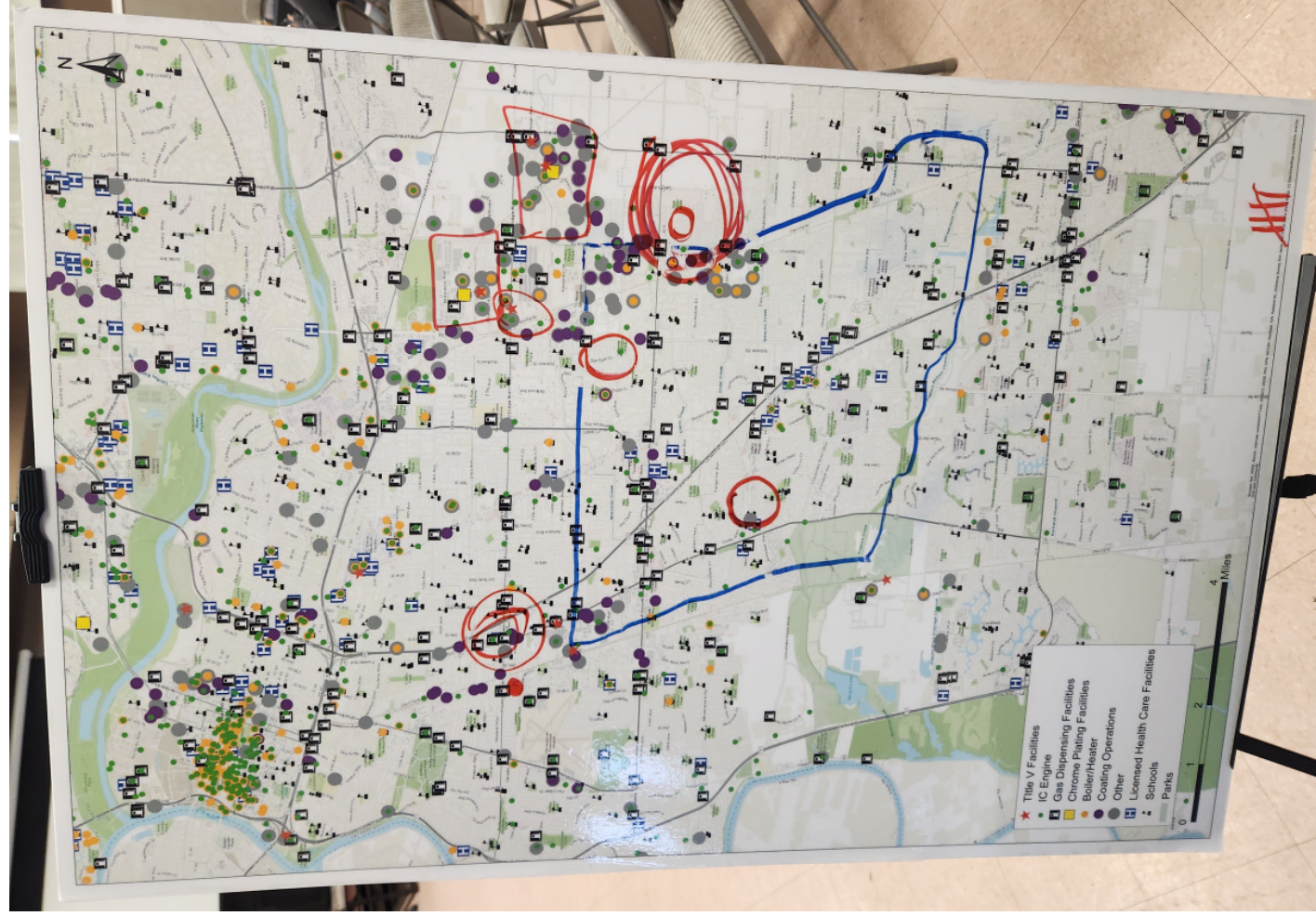


CATA Data Portal

- CATA Data Portal offers universal access to data through user-friendly mapping tools and visualization of CATA's key findings.
- Visit: <https://california-air-toxics-assessment-californiaarb.hub.arcgis.com/>
- Step-by-step tutorials on how to navigate the data portal are found at the bottom of the above webpage.
- Contact us at: cata@arb.ca.gov



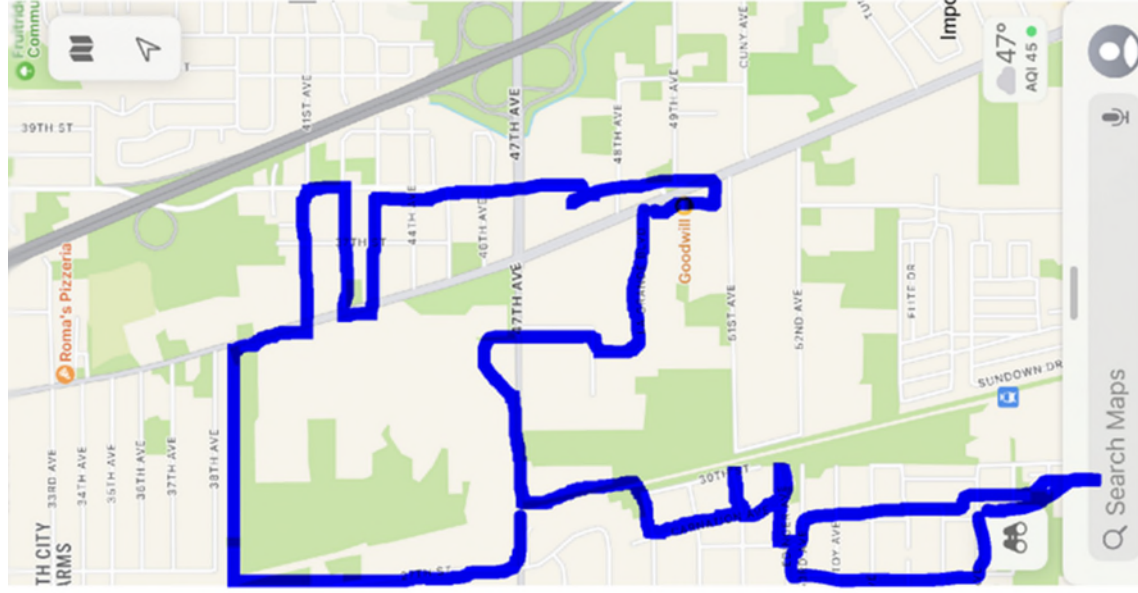
Areas of Concern from 2024 Dia de la Tierra event



Areas of Concern and Bus Tour Suggestions Received from Public



Areas of Concern and Bus Tour Suggestions Received from Public



Important to show people proximity to pollution