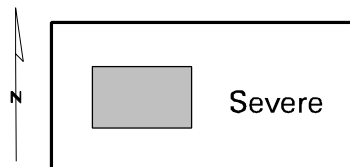
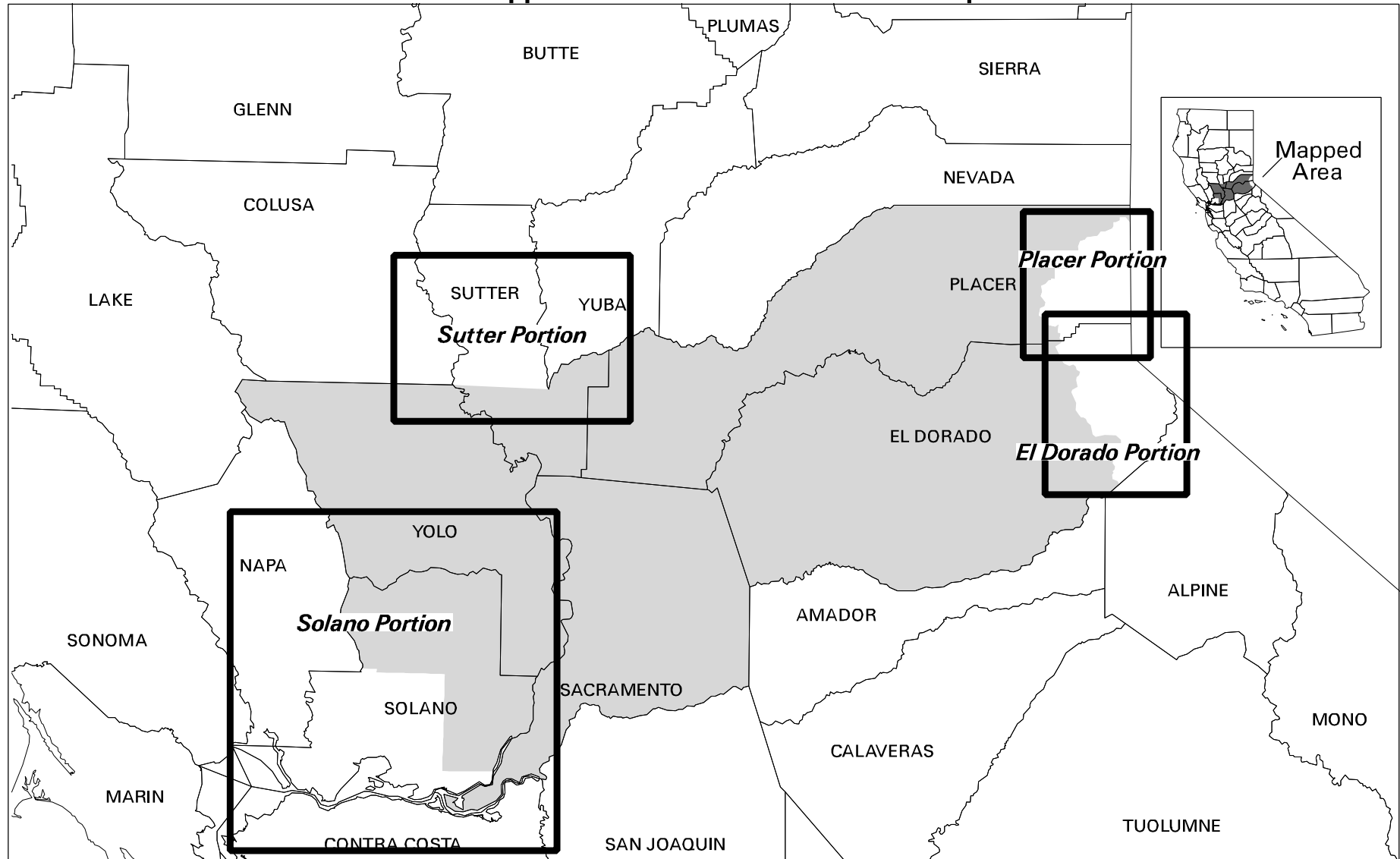


Federal Ozone Nonattainment Area - "Severe" Designation Status

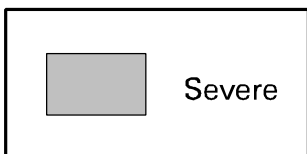
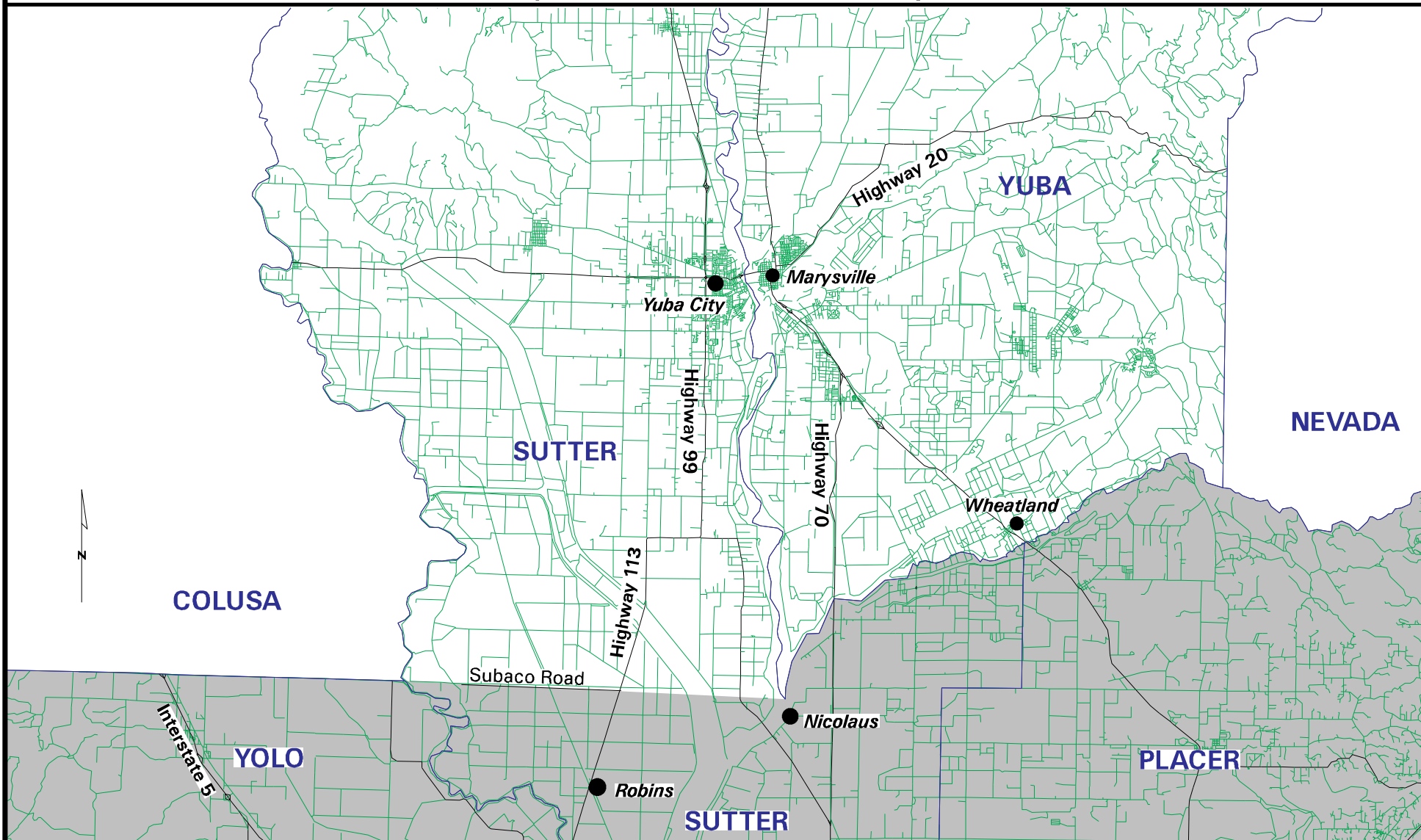
Guide to Mapped Portions of Sacramento Metropolitan Area



This map represents the Federal EPA's classification of the Sacramento Metropolitan Area designated as severe in attaining National Ambient Air Quality Standards for ozone. The coverage shows EPA-designated areas (comprised of counties, partial counties, air basins, drainages and urbanized areas). The coding is based upon the Code of Federal Regulations, Title 40 part 81, entitled "Designation of Areas for Air Quality Planning Purposes" (Federal Register Volume 56, Number 215, November 6, 1991.) The Coverage used to make the map was created August 1994 by Teale Data Center; and was edited January 30, 1996, to reflect changes published in the Federal Register (FR 20238) on April 25, 1995, when Sacramento ozone nonattainment status changed from "Serious" to "Severe".

Federal Ozone Nonattainment Area - "Severe" Designation Status

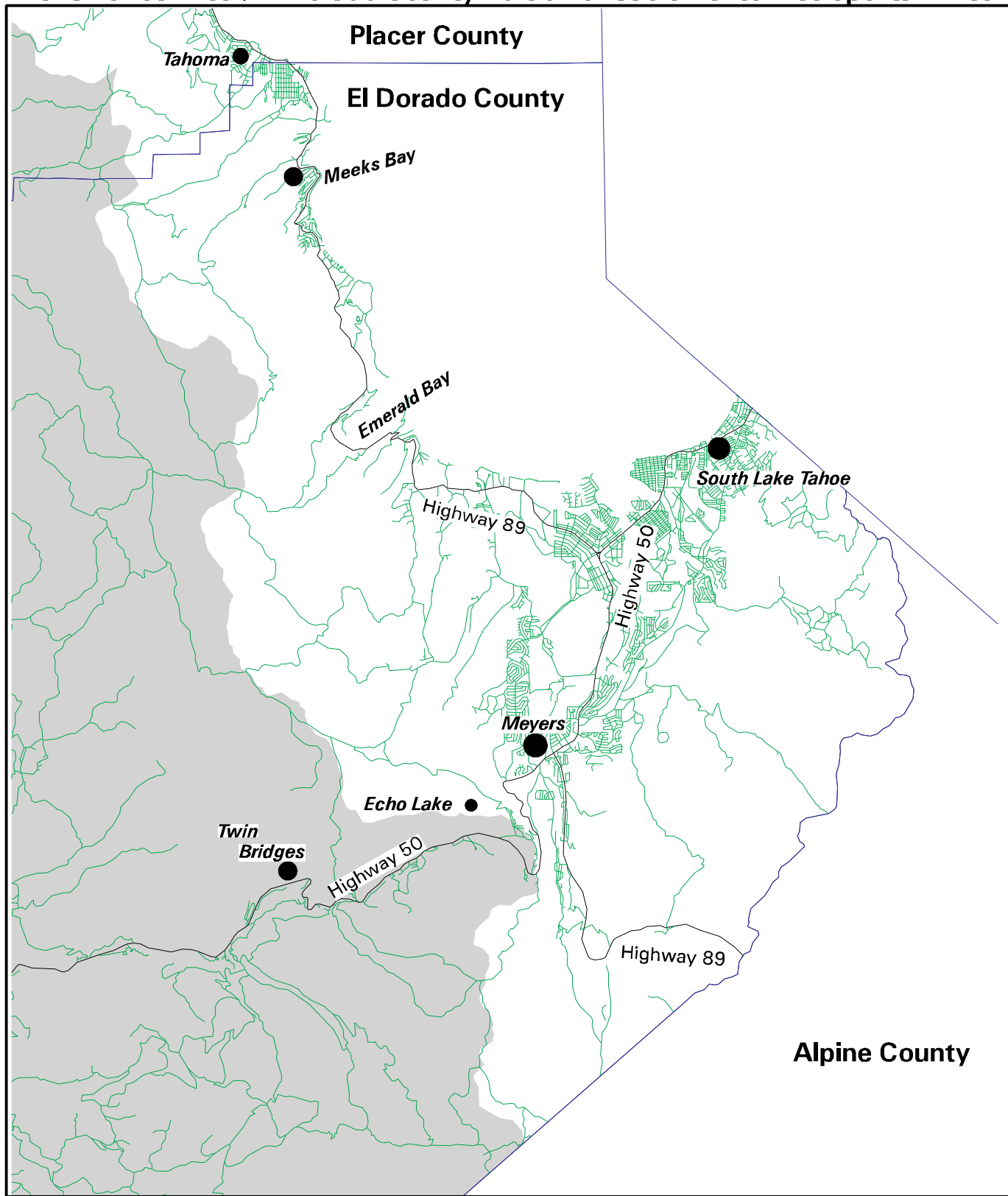
Sutter County Portion of Sacramento Metropolitan Area



This map represents the Federal EPA's classification of the Sacramento Metropolitan Area designated as severe in attaining National Ambient Air Quality Standards for ozone. The coverage shows EPA-designated areas (comprised of counties, partial counties, air basins, drainages and urbanized areas). The coding is based upon the Code of Federal Regulations, Title 40 part 81, entitled "Designation of Areas for Air Quality Planning Purposes" (Federal Register Volume 56, Number 215, November 6, 1991.) The Coverage used to make the map was created August 1994 by Teale Data Center; and was edited January 30, 1996, to reflect changes published in the Federal Register (FR 20238) on April 25, 1995, when Sacramento ozone nonattainment status changed from "Serious" to "Severe".

Federal Ozone Nonattainment-"Severe" Designation Status

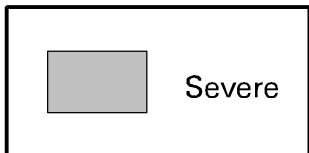
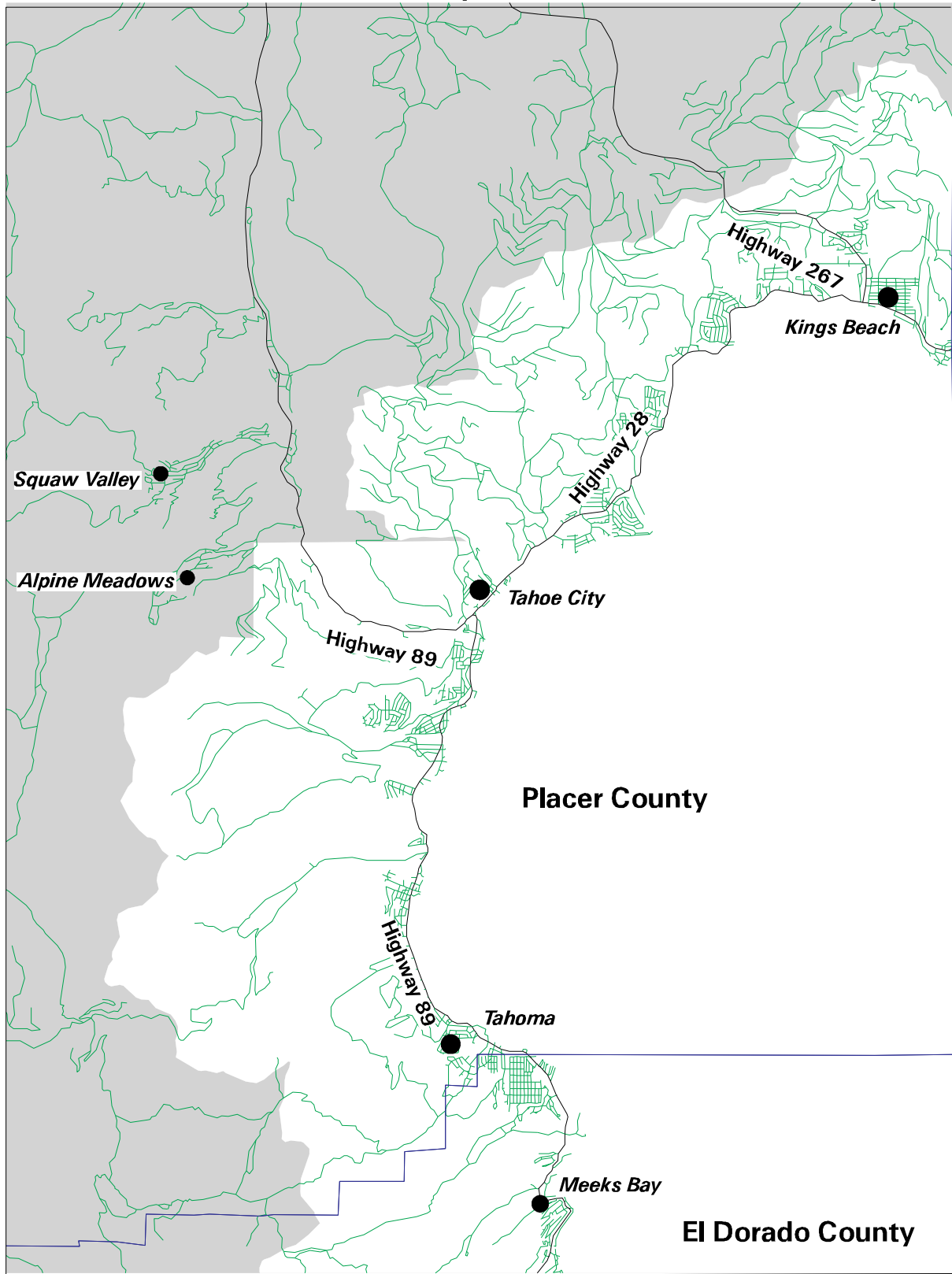
Lake Tahoe Area / El Dorado County Portion of Sacramento Metropolitan Area



This map represents the Federal EPA's classification of the Sacramento Metropolitan Area designated as severe in attaining National Ambient Air Quality Standards for ozone. The coverage shows EPA-designated areas (comprised of counties, partial counties, air basins, drainages and urbanized areas). The coding is based upon the Code of Federal Regulations, Title 40 part 81, entitled "Designation of Areas for Air Quality Planning Purposes" (Federal Register Volume 56, Number 215, November 6, 1991.) The Coverage used to make the map was created August 1994 by Teale Data Center; and was edited January 30, 1996, to reflect changes published in the Federal Register (FR 20238) on April 25, 1995, when Sacramento ozone nonattainment status changed from "Serious" to "Severe".

Federal Ozone Nonattainment-"Severe" Designation Status

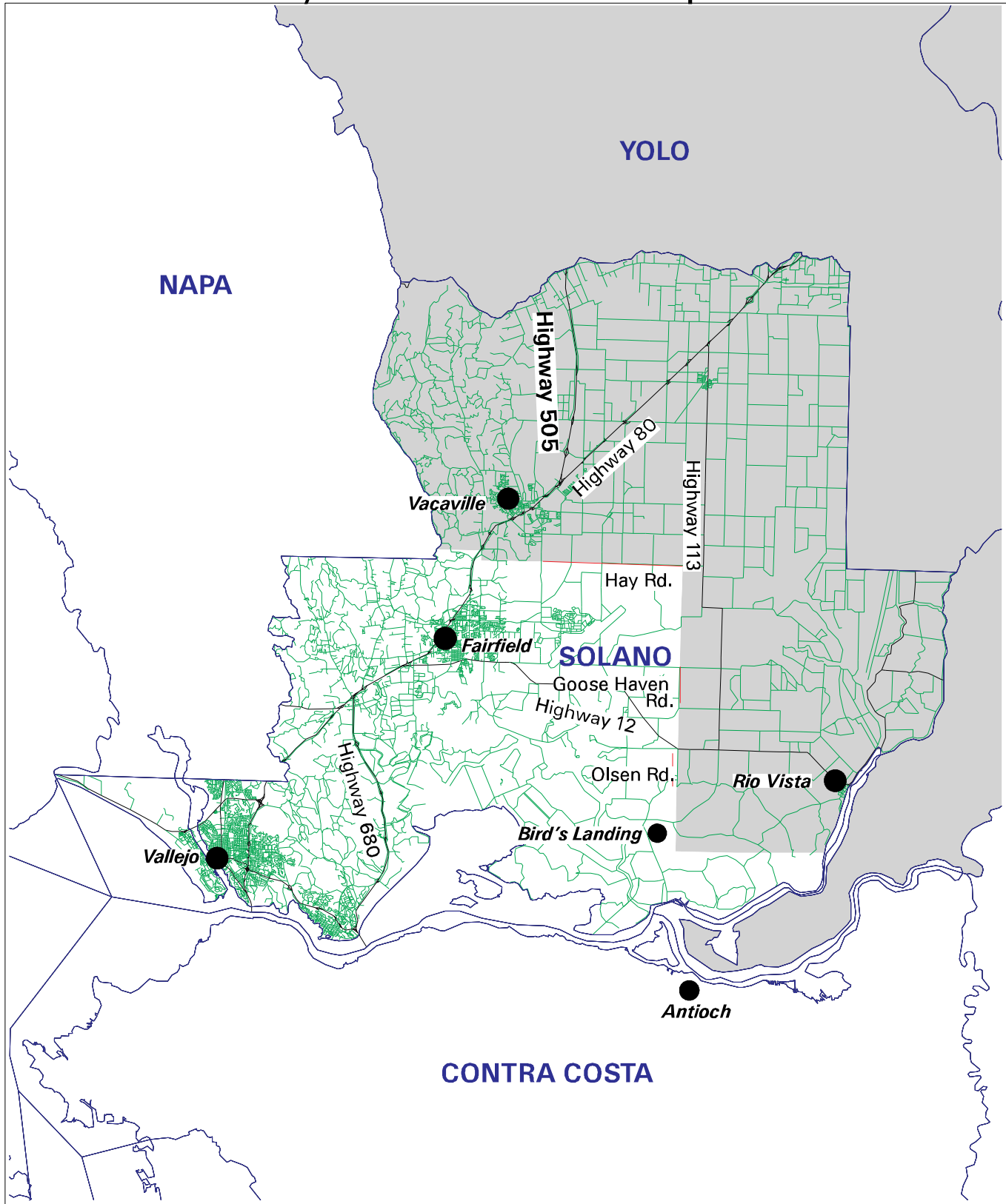
Lake Tahoe Area / Placer County Portion of Sacramento Metropolitan Area



This map represents the Federal EPA's classification of the Sacramento Metropolitan Area designated as severe in attaining National Ambient Air Quality Standards for ozone. The coverage shows EPA-designated areas (comprised of counties, partial counties, air basins, drainages and urbanized areas). The coding is based upon the Code of Federal Regulations, Title 40 part 81, entitled "Designation of Areas for Air Quality Planning Purposes" (Federal Register Volume 56, Number 215, November 6, 1991.) The Coverage used to make the map was created August 1994 by Teale Data Center; and was edited January 30, 1996, to reflect changes published in the Federal Register (FR 20238) on April 25, 1995, when Sacramento ozone nonattainment status changed from "Serious" to "Severe".

Federal Ozone Nonattainment-"Severe" Designation Status

Solano County Portion of Sacramento Metropolitan Area



This map represents the Federal EPA's classification of the Sacramento Metropolitan Area designated as severe in attaining National Ambient Air Quality Standards for ozone. The coverage shows EPA-designated areas (comprised of counties, partial counties, air basins, drainages and urbanized areas). The coding is based upon the Code of Federal Regulations, Title 40 part 81, entitled "Designation of Areas for Air Quality Planning Purposes" (Federal Register Volume 56, Number 215, November 6, 1991.) The Coverage used to make the map was created August 1994 by Teale Data Center; and was edited January 30, 1996, to reflect changes published in the Federal Register (FR 20238) on April 25, 1995, when Sacramento ozone nonattainment status changed from "Serious" to "Severe".