

SAC METRO



AIR DISTRICT

CLEAN AIR FOR ALL

2026

Annual Network Plan



This page is intentionally left blank

Table of Contents

Section 1	Introduction	6
Section 2	Network Operations.....	6
Section 3	Minimum Monitoring Requirements.....	12
Section 3.1	General	12
Section 3.2	Photochemical Assessment Monitoring Station	14
Section 3.3	Operating Schedule	14
Section 4	Recent and Proposed Modifications to the Network.....	15
Section 4.1	Elk Grove-Bruceville Rd.	15
Section 4.2	Sacramento-Del Paso Manor	16
Section 4.3	Near-road site #2	16
Section 4.4	Replacement for the North Highlands station.....	16
Section 5	Quality Assurance and Other Monitoring Requirements for the PQAO ..	16
Section 6	Process to Review Changes to PM _{2.5} Monitoring Network.....	17
Section 7	Data Submission Requirements	17
Appendix A	Detailed Site and Monitor Information	18
Appendix A.1	Sacramento-Bercut Dr.	18
Appendix A.2	Sacramento-Branch Center #2	25
Appendix A.3	Elk Grove-Bruceville Rd.	30
Appendix A.4	Sacramento-Del Paso Manor	39
Appendix A.5	Folsom-Natoma St.	54
Appendix A.6	Sloughhouse	61
Appendix A.7	Sacramento-T Street.....	67
Appendix B	Minimum Monitoring Requirement Assessment	71
Appendix C	Data Certification Letters to U.S. EPA and CARB	72
Appendix D	Sacramento-Del Paso Manor Temporary Shutdown	77

List of Abbreviations and Acronyms

Abbreviation	Definition
µg/m ³	Microgram per cubic meter
AAC Lab	Atmospheric Analysis and Consulting, Inc.
AADT	Annual average daily traffic
AB617	Assembly Bill 617
AGL	Above ground level
ANP	Annual Network Plan
AQI	Air Quality Index
AQS	Air Quality System
ARM	Approved regional monitor
Auto-GC	Automatic gas chromatography analyzer
BAM	Beta attenuation monitor
BC	Black Carbon
BTX	Benzene, toluene, and xylenes
CAP III	California Alternative Plan III
CARB	California Air Resources Board
CBSA	Core-based Statistical Area
CFR	Code of Federal Regulation
CO	Carbon monoxide
CSN	Chemical Speciation Network
District	Sacramento Metropolitan Air Quality Management District
DV	Design Value
EMP	Enhanced Monitoring Plan
ERG	Eastern Research Group, Inc.
FEM	Federal equivalent method
FR	Federal Register
FRM	Federal reference method
m	Meter(s)
MSA	Metropolitan Statistical Area
NAAQS	National Ambient Air Quality Standards
NCORE	National Core Multiple-pollutant Monitoring Stations
NEI	National Emission Inventory
NMHC	Non-methane hydrocarbon
NO ₂	Nitrogen dioxide
NO _x	Oxides of nitrogen
NOY	Reactive Oxides of Nitrogen
O ₃	Ozone
PAMS	Photochemical Assessment Monitoring Station
Pb	Lead
PM	Particulate matter
PM ₁₀	Particulate matter, 10 micrometers or smaller
PM _{2.5}	Particulate matter, 2.5 micrometers or smaller
PM _{COARSE}	Particulate matter, between 10 and 2.5 micrometers

ppb	Parts per billion
ppm	Parts per million
PQAO	Primary quality assurance organization
PWEI	Population weighted emission index
QA	Quality assurance
QC	Quality control
RASS	Radio acoustic sounding system
RTI	Research Triangle Institute
RWP	Radar wind profiler
Sac Metro Air District	Sacramento Metropolitan Air Quality Management District
SACDOT	Sacramento County Department of Transportation
SASS	Speciated air sampling system
SCC	Sacramento City Code
SIP	State Implementation Plan
SLAMS	State and local air monitoring stations
SO ₂	Sulfur dioxide
SPM	Special purpose monitor
STN	Speciation Trends Network
TAPI	Teledyne Advanced Pollution Instrumentation
TC	Total Carbon
TEI	Thermo Environmental Instruments
U.S. EPA	United States Environmental Protection Agency
VOC	Volatile organic compound
VSCC	Very sharp cut cyclone

Section 1 Introduction

State and local agencies that conduct ambient air monitoring for regulatory purposes are required by Title 40, Code of Federal Regulations (40 CFR), Section 58.10 to submit an Annual Network Plan (ANP) to the United States Environmental Protection Agency (U.S. EPA) no later than July 1st of each year. The report must contain specific monitoring network information and must be presented for a 30-day public review period prior to submittal to the U.S. EPA as required by 40 CFR Section 58.10. This ANP was posted on Sacramento Metropolitan Air Quality Management District's ('Sac Metro Air District's' or 'District's') website for public review and comment from May 19, 2026 through June 19, 2026. No public comment was received.

The primary purpose of this ANP is to document the existing Sacramento County air monitoring network and to discuss proposed changes in the ambient air monitoring network that may occur within 18 months following the submittal of this report. The plan includes information on monitors that are a part of the State and Local Air Monitoring Stations (SLAMS), National Core Multi-Pollutant Monitoring Stations (NCore), Chemical Speciation Network (CSN), Speciation Trends Network (STN), Special Purpose Monitor (SPM) sites, and Photochemical Assessment Monitoring Station (PAMS) network. The plan states whether each monitor in the ambient air monitoring network meets the requirements of 40 CFR Part 58, including Appendix A, C, D, and E, where applicable. 40 CFR Part 58, Appendix B, does not apply to the District's monitoring network because the District does not operate any air monitors regulated by Appendix B, which pertains only to the Prevention of Significant Deterioration monitors. This report includes Federal Reference Method (FRM) and Federal Equivalent Method (FEM) monitors.

This report is not an extensive analysis on the design of the local air monitoring network. The network assessment, done every five years starting in 2010 as required by 40 CFR Section 58.10, performs this analysis. The 2025 network assessment is available on the District's website at <http://www.airquality.org/Air-Quality-Health/Air-Monitoring/Regulatory-Air-Monitoring>.

Section 2 Network Operations

Sac Metro Air District is the local air quality regulatory and monitoring organization with jurisdiction in Sacramento County, California. Sacramento County is in the middle of California's Central Valley and part of the Sacramento-Arden Arcade-Roseville Metropolitan Statistical Area (Sacramento MSA), which also includes Placer, El Dorado, and Yolo Counties. The MSA has an estimated population of 2.48 million, including 1.62 million in Sacramento County¹. Figure 1 shows a map of the Sacramento MSA.

A portion of the Sacramento MSA is a nonattainment area for the federal 2015 8-hr ozone (O₃) standards and is referred to as the Sacramento Federal Ozone Nonattainment Area². The federal ozone nonattainment area includes all of Sacramento and Yolo Counties and portions of Placer, El Dorado, Solano, and Sutter Counties. The District developed and submitted a SIP revision in 2023 to address the 2015 ozone standard requirements, which U.S. EPA has not yet acted on. Due to federal policy changes affecting projected emission

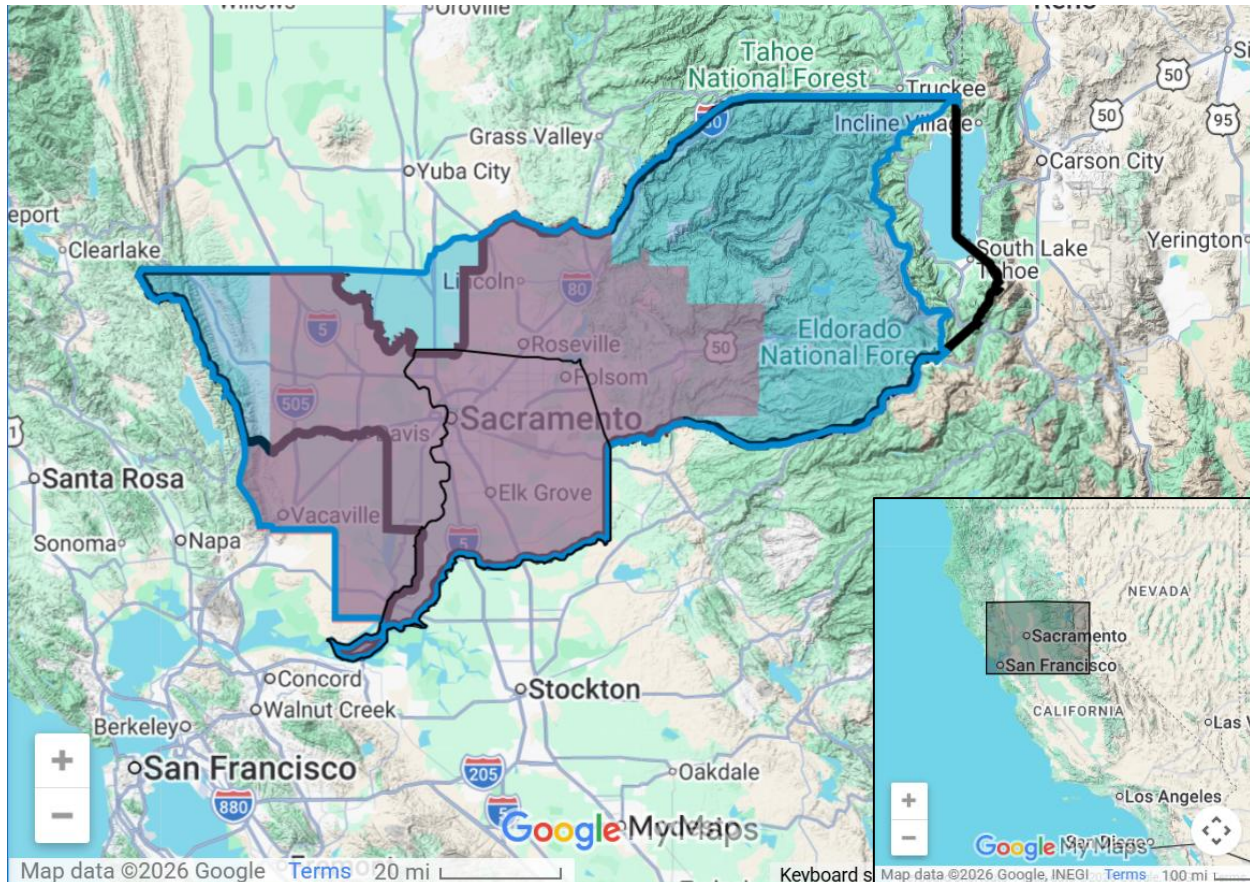
¹ United States Census Bureau, QuickFacts, 2024 Population Estimates (accessed 30 Mar 2026)

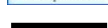



² <https://www.regulations.gov/document/EPA-HQ-OAR-2017-0548-0420>

reductions, CARB is developing an update to ensure this plan meets the 2015 NAAQS requirements.

Additionally, on August 21, 2025, U.S. EPA published a final action in the Federal Register “to determine that the Sacramento Metro, California area attained the 2008 8-hr ozone national ambient air quality standards (NAAQS)” by the applicable attainment date (90 FR 40741). The SFNA has also been meeting the 1979 and 1997 ozone standards for many years, and the District is developing a maintenance plan and requesting U.S. EPA to redesignate the area to attainment under these three standards.

Figure 1 – Sacramento-Arden Arcade-Roseville, California, MSA



-  Sacramento—Arden-Arcade—Roseville MSA
-  Sacramento County
-  PM_{2.5} Nonattainment Area
-  O₃ Nonattainment Area

The Sacramento region was also designated as nonattainment for the 2006 24-hour particulate matter with size of 2.5 microns or smaller (PM_{2.5}) standard. The region met the 2006 24-hour PM_{2.5} standard in 2017 (82 FR 21711) and will continue to reduce PM_{2.5} levels through various programs and strategies. In February 2024, U.S. EPA promulgated a revised annual PM_{2.5} standard³. However, several states and groups filed a legal challenge against the revised PM_{2.5} standard in federal court, the outcome of which is still pending as of Spring 2026. If this new standard is eventually upheld, the District will

³ Based on preliminary data, SMAQMD will meet the proposed standard from 2024

work with CARB and U.S. EPA to determine the appropriate designation for Sacramento and if there are any additional monitoring requirements

Sacramento County has met the particulate matter with size of 10 microns or smaller (PM₁₀) air quality standard since 2002. Sacramento County is designated as attainment for the most recent federal health standards for carbon monoxide (CO), nitrogen dioxide (NO₂), and sulfur dioxide (SO₂). U.S. EPA has designated Sacramento County as unclassifiable/attainment for the 2008 federal lead (Pb) standard⁴.

Sac Metro Air District operates six air monitoring sites within Sacramento County. CARB operates the seventh site at the Sacramento-T Street location. Figure 2 shows the location of air monitoring sites in Sacramento County. Sac Metro Air District is monitoring all criteria air pollutants⁵ as federally required, except for lead, which was discontinued in 2020 with the U.S. EPA's approval. The District also monitors federally required, non-criteria air pollutants and meteorological parameters. Table 1 through Table 3 list the criteria pollutants, non-criteria pollutants and meteorological parameters measured at each station located in Sacramento County. Each monitoring instrument is categorized by a monitor type: SLAMS or SPM. A SLAMS monitor may be further subdivided into one or more network affiliations (e.g., PAMS, NCore, near-road, CSN STN). Unless otherwise noted, all monitors listed in Table 1 through Table 3 are SLAMS monitor type. Each of the tables are color coded to identify network affiliations, if any.

Any shared monitoring responsibilities between the District and neighboring monitoring organizations in the Sacramento MSA are discussed in Section 3, Minimum Monitoring Requirements. For details on monitors in neighboring counties within the Sacramento MSA, please refer to the latest Annual Monitoring Network Plan published by California Air Resources Board (CARB).

⁴ <https://www.epa.gov/lead-designations/lead-designations-final-nonattainment-designations-rounds-1-and-2>; 70 FR 72097

⁵ O₃, CO, NO₂, SO₂, PM_{2.5}, PM₁₀

Figure 2 – Air Monitoring Sites in Sacramento County

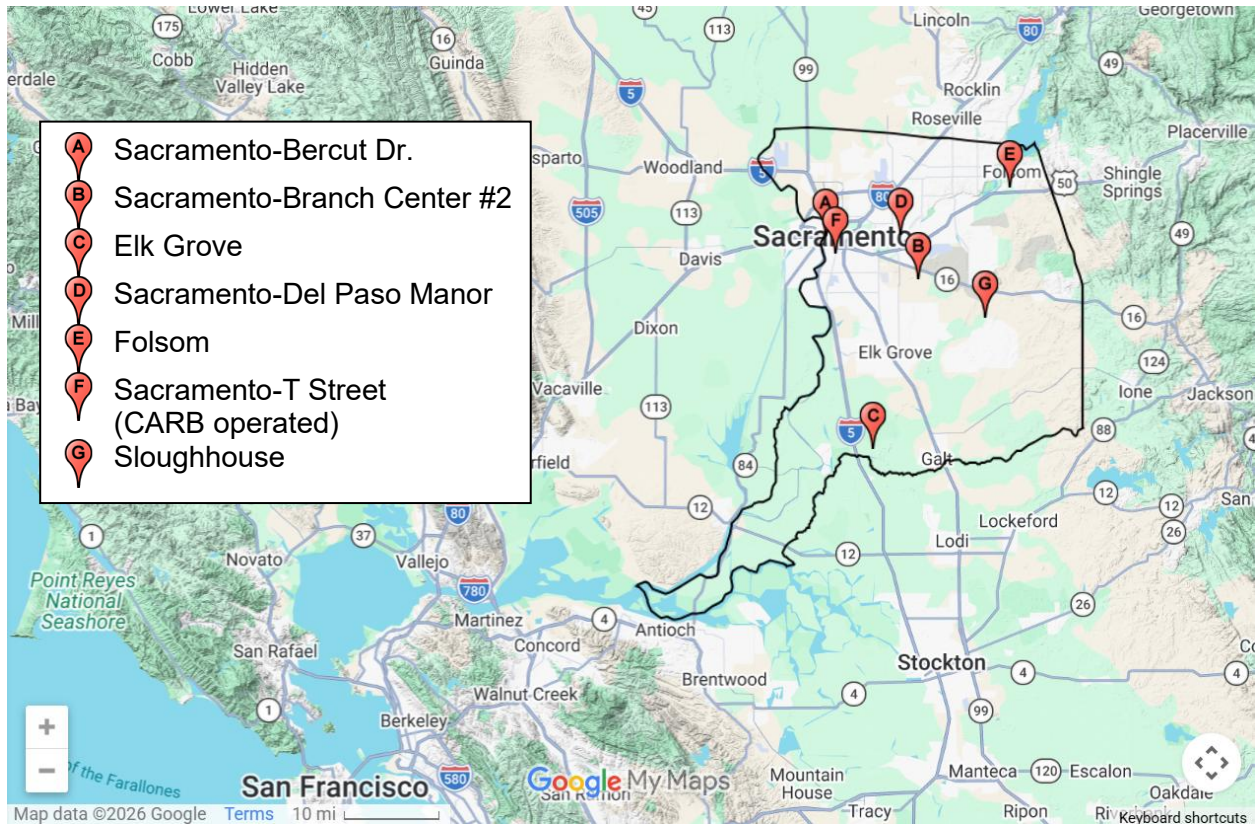


Table 1 – Criteria Pollutants Measured by Stations

Station Name	O ₃	CO	NO ₂	SO ₂	Pb	PM ₁₀ (Hourly)	PM ₁₀ (24-hr)	PM _{2.5} (Hourly)	PM _{2.5} (24-hr)
Sacramento-Bercut Dr.		✓	✓					✓	
Sacramento-Branch Center #2							✓		
Elk Grove-Bruceville Rd.	✓		✓			✓(A)		✓	
Sacramento-Del Paso Manor	✓	✓	✓	✓			✓	✓	✓
Folsom-Natoma St.	✓		✓					✓	
Sloughhouse	✓							✓	
Sacramento-T Street	✓		✓			✓		✓	✓

Note: All monitors are part of the SLAMS federal air quality surveillance network unless noted otherwise

☐ No affiliation or not applicable

■ Near Road

■ Photochemical Assessment Monitoring Station (PAMS)

■ National Core Multi-pollutant Monitoring Stations (NCORE)

■ Multiple affiliation types (Includes SLAMS, PAMS & NCORE)

(A) Monitor was installed in March 2025

Table 2 – Non-Criteria Pollutants Measured by Stations

Station Name	NO _y ^(A)	NMHC ^(B)	VOC ^(C)	Carbonyl	PM _{10-2.5}	Speciated PM _{2.5}	BC ^(D)
Sacramento-Bercut Dr.							✓
Sacramento-Branch Center #2							
Elk Grove-Bruceville Rd.		✓(E)					
Sacramento-Del Paso Manor	✓	✓(E)	✓	✓	✓	✓	✓
Folsom-Natoma St.		✓(E)					
Sloughhouse							
Sacramento-T Street						✓	

Note: All monitors are part of the SLAMS federal air quality surveillance network unless noted otherwise

- No affiliation or not applicable
- Near Road
- Photochemical Assessment Monitoring Station (PAMS)
- National Core Multi-pollutant Monitoring Stations (NCore)
- Carbon Speciation Network (CSN)
- Multiple affiliation types (Includes SLAMS, NCore and CSN)
- Special purpose monitor ([SPM] not part of SLAMS)

- (A) Reactive oxides of nitrogen
- (B) Non-methane hydrocarbon
- (C) Volatile organic compounds
- (D) Black carbon
- (E) These monitors are on a temporary shutdown due to instrument malfunction and will be replaced

Table 3 – Meteorology Measured by Stations

Station Name	OT ^(A)	RH ^(B)	SR ^(C)	UVR ^(D)	BP ^(E)	Rain	WD/ WS ^(F)	Ceilo- meter
Sacramento-Bercut Dr.	✓						✓	
Sacramento-Branch Center #2								
Elk Grove-Bruceville Rd.	✓	✓	✓	✓	✓	✓	✓	✓
Sacramento-Del Paso Manor	✓	✓	✓				✓	
Folsom-Natoma St.	✓	✓	✓				✓	
Sloughhouse							✓	
Sacramento-T Street	✓	✓					✓	

Note: All monitors are part of the SLAMS federal air quality surveillance network unless noted otherwise

- No affiliation or not applicable
- Near Road
- Photochemical Assessment Monitoring Station (PAMS)
- Multiple affiliation types (includes SLAMS, PAMS and NCore)
- Special purpose monitor ([SPM] not part of SLAMS)

- (A) Outdoor temperature
- (B) Relative humidity
- (C) Solar radiation
- (D) Ultraviolet radiation
- (E) Barometric pressure
- (F) Wind direction/wind speed

The primary focus of the current ambient air monitoring network is the data collection of criteria pollutants. The data collected from the air monitoring stations supports State Implementation Plan (SIP) development, attainment/nonattainment decisions, public notification, and air quality modeling and research efforts. The network is designed to meet three basic monitoring objectives as required by 40 CFR Part 58, Appendix D: (1) provide air pollution data to the general public in a timely manner; (2) support compliance with ambient quality standards and emissions strategy development; and (3) support air pollution research studies. An overview of monitoring objectives is in Table 4.

Table 4 - Monitoring Objectives of Criteria Pollutants

Station Name	O ₃	CO	NO ₂	SO ₂	Pb	PM ₁₀ (Hourly)	PM ₁₀ (24-hr)	PM _{2.5} (Hourly)	PM _{2.5} (24-hr)
Sacramento-Bercut Dr.		N,P,R	N,P,R						N,P,R
Sacramento-Branch Center #2							N,P		
Elk Grove-Bruceville Rd.	N,P		N,P			N, P ^(A)		P	
Sacramento-Del Paso Manor	N,P,R	N,P,R	N,P,R	N,P,R			N,P,R ^(B)	P,R	N,P,R
Folsom-Natoma St.	N,P		N,P					N,P,R	
Sloughhouse	N,P							N,P,R	
Sacramento-T Street	N,P		N,P			N,P		N,P	

Monitoring objective abbreviation:

N – National Ambient Air Quality Standards (NAAQS) Comparison

P – Public Info

R – Research

^(A) Monitor was installed in March 2025

^(B) There are three PM₁₀ monitors at Sacramento-Del Paso Manor; the primary monitor for NAAQS comparison and its collocated (audit) monitor with parameter code 88102 have objectives of N and P; the last PM₁₀ monitor with parameter code 85101, used in the calculation of Particulate Matter with size between 10 and 2.5 micrometers (Coarse), has objectives of P and R.

There are different types of monitoring sites to support these monitoring objectives. Examples of these include: sites that are located in the highest pollutant concentration area, sites that are located in areas of high population density to monitor for population exposure, and sites that determine general background concentration levels. A complete list of different types of monitoring sites is in 40 CFR Part 58, Appendix D. In addition, a spatial scale of representativeness is assigned to the air monitors to identify “the link between general monitoring objectives, site types and the physical location of a particular monitor” (40 CFR Part 58, Appendix D). Table 5 summarizes the site type and spatial scale. Description and further explanation on site type and spatial scale can be found in 40 CFR Part 58, Appendix D.

For in-depth details on individual monitors, see Appendix A, which documents monitor type, affiliation, monitoring objectives, type of site, and spatial scale by each monitor. It also provides a statement of purpose and pollutant-specific information, such as whether a PM_{2.5} monitor is suitable for comparison to the national ambient air quality standard, 1-point quality control (QC) check frequency and distance to other PM monitors. All monitors operated in the District’s ambient air monitoring network meet the requirements of 40 CFR Part 58, including Appendices A, C, D, and E.

Table 5 – Type of Site and Spatial Scale

Site	Pollutant	Site Type	Spatial Scale
Sacramento-Bercut Dr.	CO	Source Oriented	Microscale
	NO ₂	Source Oriented	Microscale
	PM _{2.5}	Source Oriented	Microscale
	BC	Source Oriented	Not applicable
Sacramento-Branch Center #2	PM ₁₀	Highest Concentration	Neighborhood
Elk Grove-Bruceville Rd.	O ₃	Upwind/Background	Urban
	NO ₂	Upwind/Background	Urban
	PM _{2.5}	General/Background	Urban
	PM ₁₀ ^(A)	General/Background	Urban
Sacramento-Del Paso Manor	O ₃	Population Exposure	Neighborhood
	CO	Population Exposure	Neighborhood
	NO ₂	Population Exposure	Neighborhood
	SO ₂	Population Exposure	Urban
	PM ₁₀	Population Exposure	Neighborhood
	PM _{2.5}	Population Exposure, Highest Concentration	Neighborhood
	BC	Population Exposure	Not applicable
Folsom-Natoma St.	O ₃	Maximum Ozone, Population Exposure	Neighborhood
	NO ₂	Highest Concentration	Neighborhood
	PM _{2.5}	Population Exposure	Neighborhood
Sloughhouse	O ₃	Maximum Ozone	Neighborhood
	PM _{2.5}	Upwind/background	Urban
Sacramento-T Street	O ₃	Upwind/background	Urban
	NO ₂	Population Exposure	Neighborhood
	PM ₁₀	Population Exposure	Neighborhood
	PM _{2.5}	Population Exposure	Neighborhood

^(A) Monitor was installed in March 2025

Section 3 Minimum Monitoring Requirements

Section 3.1 General

The minimum number of monitoring sites required for each pollutant is based on one or more applicable factors, as described in 40 CFR Part 58, Appendix D. Examples of these factors include: MSA population, core-based statistical area (CBSA) population, pollutant design value, pollutant maximum concentration, attainment status, annual average daily traffic (AADT), population weighted emission index (PWEI), SIP, maintenance plan and U.S. EPA's national emission inventory (NEI) data requirements.

Sacramento MSA meets federal monitoring requirements for most criteria pollutants – O₃, PM_{2.5} (manual and continuous methods), PM₁₀, SO₂, and Pb. The District is working with CARB and U.S. EPA to meet CO and NO₂ monitoring requirements. Details of the monitors representing Sacramento MSA (or CBSA, ID#40900) are provided in Table 6. As mentioned in Section 2, Sacramento MSA has 2.48 million residents and covers all El Dorado, Placer, Sacramento, and Yolo Counties.

Sac Metro Air District has an agreement with CARB to share specific portions of the monitoring responsibility in the Sacramento MSA. A copy of this agreement is available upon request. Placer County Air Pollution Control District, Yolo-Solano Air Quality Management District, the air monitoring organizations for Placer and Yolo Counties, respectively, also operate air monitoring stations within the Sacramento MSA. Appendix B lists the number of monitors operated by CARB and different air districts in Sacramento MSA.

Table 6 – Sacramento MSA Design Value and SLAMS Monitoring Site Requirement

Pollutant and type ^(A)	Sites in MSA	Additional needed	Notes ^(B)
O ₃	15	0	0.075 ppm at Sacramento-Del Paso Manor (Site #06-067-0006) with wildfire impact ^(C)
CO	Near-road	1 ^(D)	Sacramento-Bercut Dr. is one of the two required near-road monitors
	Area-wide	1	Sacramento-Del Paso satisfies the NCore and CO Maintenance Plan requirements
NO ₂	Near-road	1 ^(D)	Highest AADT: 256,000 ^(E)
	Area-wide	6	Sacramento-Del Paso Manor serves as both PAMS and area-wide monitor
SO ₂	1	0	PWEI: 3,100 million persons-tons per year ^(F) Sacramento-Del Paso Manor satisfies the NCore requirement
PM _{2.5}	FRM/FEM	8	24-hr standard: 25 µg/m ³ at Sacramento-Del Paso Manor (Site #06-061-0006) with wildfire impact ^(C)
	Continuous (includes non-FEM)	13	Annual Standard: 8.1 µg/m ³ at Woodland-Gibson Rd. (Site #06-113-1003) with wildfire impact ^(C)
PM ₁₀	8 ^(G)	0	Estimated number of exceedances: 0.0
PM _{10-2.5}	1	0	Required at the Sacramento-Del Paso Manor as an NCore requirement
Pb	NCore	0	Monitor discontinued in May 2020 due to low ambient concentration and change in monitoring requirements
	Source oriented	0	No non-airport source greater than 0.5 tons per year or airport source greater than 1.0 tons per year ^(H)

Source: U.S. EPA Air Quality System (AQS) Site/Monitor Data Report (AMP 500), accessed on 26 Mar 2025, and Design Value Report (AMP 480), accessed on 24 Mar 2025

Units abbreviation: ppm – part per million; µg/m³ – microgram per cubic meter

^(A) For site requirement information, see 40 CFR Part 58, Appendix D

^(B) Design values are included for O₃, PM_{2.5}, PM₁₀, as they help to determine the number of sites required
^(C) The design values shown in this table include wildfire smoke impact in 2023; the District will address these impacts under the Exceptional Event Rule (81 FR 68216) as necessary

^(D) The District is working with EPA and CARB to investigate potential sites, determine appropriate timeline, and funding to implement a 2nd near-road site

^(E) California Department of Transportation, 2023 Traffic Volumes, accessed 24 Mar 2026

^(F) Determined with the current MSA population and the SO₂ emission from the 2020 National Emission Inventory, accessed 25 Mar 2026; although representing a minor portion, point source emission was inadvertently omitted from the 2025 annual network plan; emission inventory otherwise remains unchanged

^(G) Continuous monitor was installed in March 2025

^(H) 2020 National Emission Inventory, accessed 25 Mar 2026

Section 3.2 Photochemical Assessment Monitoring Station

The District operated the legacy PAMS network from 1994 through 2020. Elk Grove-Bruceville Rd., Sacramento-Del Paso Manor, and Folsom-Natoma St. were type I, II, III PAMS sites, respectively. The 2015 review of National Ambient Air Quality Standards for Ozone (80 FR 65292) required PAMS sites to be at the NCore sites. In addition, it also required each State to draft an Enhanced Monitoring Plan (EMP) for areas with moderate or higher ozone nonattainment to include additional monitoring that is needed at other sites for the region. For 2008, the Sacramento ozone federal nonattainment area is classified as “Severe”⁶. For the 2015 standard, Sacramento is classified as serious but has submitted a request to the EPA to bump up to severe. The District, CARB, and neighboring air districts worked together to determine the appropriate monitoring plan. Details are provided in Enhanced Monitoring Plan portion of CARB’s 2020 Monitoring Network Assessment.

In Sacramento County, Sacramento-Del Paso Manor is the core PAMS station. Elk Grove-Bruceville Rd. and Folsom-Natoma St. are serving as enhanced ozone monitoring sites. Table 7 lists the PAMS instruments operated by the District. Additional modifications needed to realign to the new PAMS network requirements are as follows:

- To accommodate the large automatic gas chromatography analyzer (Auto-GC) and its support equipment, the District will have to rebuild the PAMS station at Sacramento-Del Paso Manor. Construction planning began in 2022, but challenges such as increased power needs and securing an easement for underground power have significantly delayed construction of the site. Construction started in mid-2025 and is expected to be completed in 2026.

Table 7 – Enhanced PAMS Monitoring

Site Name	O ₃	NO ₂	VOC	Carbonyl	NMHC ^(A)	Meteorology	Ceilo-meter
Elk Grove-Bruceville Rd.	✓	✓			✓ ^(B)	✓ ^(C)	✓ ^(D)
Sacramento-Del Paso Manor	✓	✓	✓ ^(E)	✓	✓ ^(E)	✓ ^(C)	
Folsom-Natoma St.	✓	✓			✓ ^(B)	✓ ^(C)	

^(A) Non-methane hydrocarbon

^(B) The NMHC analyzers at Elk-Grove Bruceville Rd. and Folsom Natoma St. are on a temporary shutdown due to instrument malfunction and will be replaced

^(C) See Table 3 for a list of meteorological equipment operated

^(D) The District received approval to operate the ceilometer at Elk Grove-Bruceville Rd. through the 2017 annual network plan but is considering relocation of the ceilometer to Sacramento-Del Paso Manor; see Section 4

^(E) An Auto-GC will replace the temporarily shut-down canister sampling system and NMHC monitor as required under the new PAMS requirements

Section 3.3 Operating Schedule

All instruments operated by the District meet the operating schedule requirements as specified in 40 CFR Section 58.12. All continuous monitors report hourly data and monitor air pollutants year-round, unless otherwise specified in Appendix A. Non-continuous

⁶ Further information on the current planning efforts on attaining ozone standards can be found on <https://www.airquality.org/residents/air-quality-plans>

monitors are operated by following the sampling schedule in Table 8 and are operated year-round.

Table 8 – Operating Schedule for PM monitors in Sacramento

Site	Pollutant	Operating Schedule ^(A)	Note
Sacramento-Branch Center #2	PM ₁₀	1 in 6 days	Max. 24-hr concentration: 46 µg/m ³ ; ratio to standard: 0.31
Sacramento-Del Paso Manor ^(B)	PM ₁₀	1 in 6 days	Max. 24-hr concentration: 30 µg/m ³ ; ratio to standard: 0.2
	PM _{10-2.5}	1 in 3 days	
	PM _{2.5}	Hourly, Daily	A continuous FEM monitor operates in parallel with a 24-hr sampler.

Source: Design values from U.S. EPA Air Quality System Raw Data Report (AMP 350), accessed on 20 Mar 2026

^(A) Operating schedule requirements can be found in 40 CFR Section 58.12

^(B) All non-continuous PM monitors at Del Paso Manor was temporarily discontinued in June 2025 for the station re-construction; they will resume operation with the new station; the continuous, hourly PM_{2.5} monitor is unaffected

Section 4 Recent and Proposed Modifications to the Network

This section discusses recent and proposed modifications to the Sacramento County air monitoring network. It includes modifications starting from 2024 and possible modifications through the end of 2026. Unless specifically noted below, Sac Metro Air District is not formally requesting approval to modify this network plan from CARB or the U.S. EPA. Prior to the termination of any SLAMS monitor, the District will work with the CARB to submit to U.S. EPA the required documentation for official review and approval. Sac Metro Air District is a part of CARB's primary quality assurance organization and works with CARB to ensure air monitoring requirements are met.

Section 4.1 Elk Grove-Bruceville Rd.

The 2020 5-year Air Monitoring Network Assessment Report recommends installation of a continuous PM₁₀ monitor at this site to “increase the efficiency of and optimize the District PM₁₀ network.” The District installed the continuous PM₁₀ monitor in February 2025, and it started operating on March 1, 2025. More information on this monitor is available in Appendix A.

To meet PAMS requirements, the District currently operates the required PAMS meteorological instruments at the Elk Grove Bruceville Rd. site rather than at the Sacramento Del Paso Manor NCORE site. This configuration was originally established because a SODAR system was co-located at Elk Grove Bruceville Rd. to provide complementary meteorological measurements. The SODAR has since been decommissioned and is no longer in service.

As part of the Sacramento Del Paso Manor site rebuild, the District is considering adding a precipitation sensor and relocating the ceilometer from Elk Grove Bruceville Rd. to complete the required PAMS meteorological measurements at the Del Paso Manor NCORE site. After installation, the meteorological equipment at both sites, excluding the ceilometer, would operate concurrently for approximately one year. Following this

evaluation period, the meteorological equipment at Elk Grove Bruceville Rd. may be removed.

Section 4.2 Sacramento-Del Paso Manor

Sacramento-Del Paso Manor was established in the 1970s with a small number of monitoring equipment units. The amount of equipment has steadily increased due to PAMS and NCore requirements, and the existing station configuration cannot accommodate the additional equipment required by the new PAMS requirements in 40 CFR Part 58. Construction for a larger station began in 2025 and is expected to be completed in 2026. When completed, the District will replace the existing PAMS VOC canister sampling with a continuous Auto-GC instrument. The District will also move the ceilometer from Bruceville and add a precipitation sensor to meet PAMS requirements.

The District is working with CARB and the U.S. EPA to determine if we can replace our PM₁₀ filter-based method with PM₁₀ continuous monitoring at this site. PM₁₀ continuous monitoring would increase district efficiency and provide real-time air quality information to the public.

Section 4.3 Near-road site #2

40 CFR Part 58 requires state or local air monitoring organizations to operate a second near-road monitoring site if a metropolitan area surpasses 250,000 in annual average daily traffic. As noted in the 2025 5-Year Air Monitoring Network Assessment, the Sacramento MSA exceeded the traffic-volume threshold for a second near-road monitoring site. The District is working with U.S. EPA and CARB to determine the appropriate timing, location, and funding for a second near-road monitoring site.

Section 4.4 Replacement for the North Highlands station

The District is working with U.S. EPA and CARB to identify a location in northern Sacramento County to replace the former North Highlands air monitoring station, which was quickly closed due to extenuating circumstances in 2022 (sale of property). Once a new location is secured, the District will initiate the request-for-proposal process.

Section 5 Quality Assurance and Other Monitoring Requirements for the PQAQ

40 CFR Part 58, Appendix A, requires monitoring activities to satisfy quality assurance criteria. Most of these activities are required and met on a primary quality assurance organization (PQAQ) level. Sac Metro Air District is a part of the CARB's PQAQ and works with the PQAQ to meet the quality assurance requirements. Currently, there are collocated PM_{2.5} FRM and PM₁₀ FRM monitors at Sacramento-Del Paso Manor. There is a collocated PM_{2.5} FEM monitor at Folsom-Natoma St. For these collocated monitors, the primary monitor and audit monitor use the same U.S. EPA FRM/FEM method designation.

After receiving an approval from U.S. EPA in April 2020, the District has discontinued the Pb monitor at Del Paso Manor in May 2020. Thus, collocation for lead will not be conducted at this location.

40 CFR Part 58, Appendix D, 4.7.3, requires each State to “install and operate at least one PM_{2.5} site to monitor for regional background and at least one PM_{2.5} site to monitor regional transport.” CARB identified Point Reyes National Seashore and San Rafael Wilderness sites as the state’s northern and southern PM_{2.5} regional background sites in its 2024 Annual Monitoring Network Report. The report identified Vallejo as the regional transport site for PM_{2.5}.

Section 6 Process to Review Changes to PM_{2.5} Monitoring Network

40 CFR Section 58.10(c) requires this annual network plan to “provide for the review of changes to a PM_{2.5} monitoring network that impact the location of a violating PM_{2.5} monitor.” There is no current plan to relocate or discontinue any PM_{2.5} monitors that impact a violating monitor. Any changes to the PM_{2.5} monitoring network with impact to the location of a violating PM_{2.5} monitor will be documented in this section when triggered by future annual network plan changes.

Section 7 Data Submission Requirements

CARB submitted precision, accuracy, and raw data for all District-operated monitors until the end of 2017. Starting in 2018, Sac Metro Air District has submitted its air monitoring data directly to AQS after performing data validation. The quarterly data submittal process also includes Quality Assurance (QA) data required by 40 CFR Part 58. In an agreement with CARB, Sac Metro Air District will certify all data the District generates and submits. Since CARB continues to weigh and analyze the PM_{2.5} FRM filters for Sac Metro Air District, CARB will continue to submit and certify that data. CARB will also submit and certify the PM coarse data. Copies of the annual data certification provided to U.S. EPA are provided in Appendix C.

- 2025 Annual data certification submitted: April 29, 2026
- 2025 Annual data certification (PM_{2.5} FRM only) submitted: March 25, 2026

Appendix A Detailed Site and Monitor Information

Detailed site information covered in this appendix reflects the existing air monitoring operation.

Appendix A.1 Sacramento-Bercut Dr.

This is an approved near-road monitoring site. Located one mile from Downtown Sacramento, this site is expected to measure the highest NO₂ concentration due to the emissions from mobile sources on Interstate 5, which is about 20 meters (m) from the site. The site started operation on October 13, 2015.

Table 9 – Sacramento-Bercut Dr. Metadata

Site Name	Sacramento-Bercut Dr.
AQS Site Number	06-067-0015
Geographic Coordinates	38.593328°N, 121.503728°W
Location	On the downwind side of Interstate 5, one mile north-northwest of Downtown Sacramento
Address	100 Bercut Dr., Sacramento, CA 95811
County	Sacramento
Metropolitan Statistical Area	Sacramento-Arden Arcade-Roseville
Distance from Roadway	Interstate 5: 20 m Bercut Dr.: 5 m
Annual Average Daily Traffic (Vehicles/Day)	Interstate 5: 205,000 (California Department of Transportation, 2021) Bercut Dr. at Bannon St.: 3,575 (City of Sacramento, 2019)
Ground Cover	Pavement, with vegetation

Figure 3 – Sacramento-Bercut Dr. Site Photo



Figure 4 – Panoramic Photo Looking North from Sacramento-Bercut Dr.



Figure 5 – Panoramic Photo Looking East from Sacramento-Bercut Dr.



Figure 6 – Panoramic Photo Looking South from Sacramento-Bercut Dr.

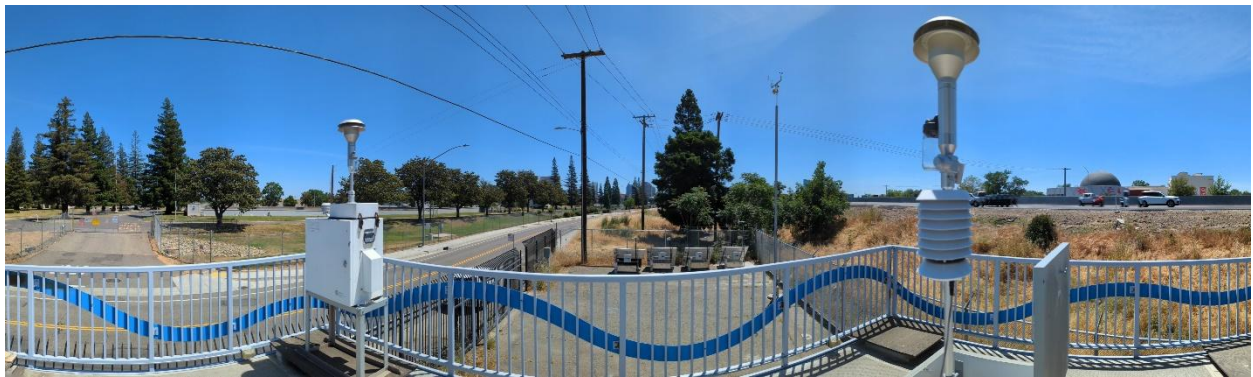


Figure 7 – Panoramic Photo Looking West from Sacramento-Bercut Dr.



Figure 8 – Google Earth Satellite Image of Sacramento-Bercut Dr.



Source: Google Earth, imagery date 10/25/2026

The circle in Figure 8 indicates there are no trees within a 10 m radius, which satisfies the siting criterion that requires drip lines of trees to be at least 10 m away from probes and inlets (40 CFR Part 58, Appendix E). Heights of potential flow obstacles are provided in Table 10.

Table 10 – Object Height Survey at Sacramento-Bercut Dr.

Obstacle	Obstacle Height (OH)	Inlet Height (IH)	$2*(OH-IH)$	Obstacle Distance (OD)	Meet Criteria? $2*(OH-IH) \leq OD$
Gaseous Manifold Inlet					
A: Tree ^(A)	8.5	4.6	7.8	33.7	Yes
B: Tree	10.9	4.6	12.6	26.2	Yes
C: Tree	13.5	4.6	17.8	43.0	Yes
D: Tree	24.0	4.6	38.8	31.4	No ^(B)
E: Tree	12.2	4.6	15.2	44.3	Yes
F: Tree	5.4	4.6	1.6	29.0	Yes
Black Carbon Inlet					
A: Tree	7.8	4.2	7.2	32.8	Yes
B: Tree	10.6	4.2	12.8	25.2	Yes
C: Tree	13.7	4.2	19.0	44.0	Yes
D: Tree	23.4	4.2	38.4	28.2	No ^(B)
E: Tree	12.0	4.2	15.6	43.3	Yes
F: Tree	5.4	4.2	2.4	29.0	Yes
Continuous PM_{2.5} (FEM) Sampler					
A: Tree	8.1	4.9	6.4	30.8	Yes
B: Tree	11.1	4.9	12.4	29.2	Yes
C: Tree	14.3	4.9	18.8	47.0	Yes
D: Tree	23.9	4.9	38.0	32.6	No ^(B)
E: Tree	12.0	4.9	14.2	43.3	Yes
F: Tree	5.8	4.9	1.8	27.0	Yes

*Units in meters

^(A) The original tree marked as “A” in the 2025 annual network plan was removed, and the marker now applies to the next closest tree

^(B) This is an old growth heritage tree, as defined by Chapter 12.64 of Sacramento City Code (SCC), and was protected from removal or significant pruning when this air monitoring station was established. Since the tree is directly downwind of the emission source, it has limited scavenging effect and does not interfere with the emission source being monitored. Before the air monitoring site was established, U.S. EPA staff had authorized the District to leave this tree in place (email correspondence with Elfego Felix, U.S. EPA Region 9, on August 6, 2013). Since Chapter 12.64 was repealed and replaced with Chapter 12.56, removing or pruning (>10% “of a combination of the root system and tree crown”) this tree requires a permit and approval from the director of the City’s Department of Parks. Despite the tree being a flow obstacle, all inlets at this station meet the 270° continuous arc in Section 2.3, Spacing From Obstructions, in 40 CFR Part 58, Appendix E.

Table 11 – Sacramento-Bercut Dr. Gaseous Instruments Operational Data

Site	Sacramento-Bercut Dr.	Sacramento-Bercut Dr.
Parameter Start Date	10/13/2015	10/13/2015
Collecting Agency	SMAQMD	SMAQMD
Analytical Lab	SMAQMD	SMAQMD
Reporting Agency	SMAQMD	SMAQMD
Pollutant	NO ₂	CO
Parameter Code	42602	42101
Parameter Occurrence	1	1
Manufacturer/Model	TAPI T200UP	TAPI T300U
Sampling Method	Instrumental	Instrumental
Method Code	200	593
Analysis Method	Photolytic-Chemiluminescence	Gas Filter Correlation
FRM/FEM/ARM/Other	FEM	FRM
Monitoring Objective	NAAQS comparison, public info, research	NAAQS comparison, public info, research
Statement of Purpose	Monitors near road emission at region's highest fleet equivalent AADT roadway	Monitors near road emission at region's highest fleet equivalent AADT roadway
Monitor Type	SLAMS	SLAMS
Affiliation	Near Road	Near Road
Site Type	Source Oriented	Source Oriented
Spatial Scale	Micro	Micro
Sampling Frequency	Continuous	Continuous
Sampling Season	Year Round	Year Round
Distance from Supporting Structure or Roof	1.9	1.9
Distance from flow obstructions on roof (m)	No obstruction	No obstruction
Distance from flow obstructions not on roof (m)	34.8	34.8
Distance from nearest tree drip line (m)	26	26
Distance to furnace or incinerator flue (m)	No furnace/flue	No furnace/flue
Distance between collocated PM monitors (m)	Not applicable	Not applicable
Unrestricted airflow (deg)	309	309
Probe height (m, agl)	4.6	4.6
Probe material	Teflon	Teflon
Residence time (seconds)	13.8	13.1
Changes in next 18 months?	No	No
1-pt QC Check frequency	Every other day	Every other day
Audit Date(s)	5/19/25	5/19/25

Table 12 – Sacramento-Bercut Dr. Particulate Matter Instruments Operational Data

Site	Sacramento-Bercut Dr.	
Parameter Start Date	10/30/2015	12/30/2020
Collecting Agency	SMAQMD	SMAQMD
Analytical Lab	SMAQMD	SMAQMD
Reporting Agency	SMAQMD	SMAQMD
Pollutant	Black Carbon	PM _{2.5}
Parameter Code	84313	88101
Parameter Occurrence Code	1	3
Manufacturer/Model	Magee Scientific M633	Met One 1020 BAM
Sampling Method	Aethalometer	Very sharp cut cyclone
Method Code	894	170
Analysis Method	Optical Absorption	Beta Attenuation
FRM/FEM/ARM/Other	Other	FEM
Monitoring Objective	Public info, research	NAAQS comparison, public info, research
Statement of Purpose	Determines component of PM emission	Monitors near road emission
Monitor Type	SLAMS	SLAMS
Affiliation	Near Road	Near Road
Site Type	Source Oriented	Source Oriented
Spatial Scale	Not applicable	Micro
Sampling Frequency	Continuous	Continuous
Sampling Season	Year Round	Year Round
Distance from Supporting Structure or Roof	1.5	2.2
Distance from flow obstructions on roof (m)	No obstruction	No obstruction
Distance from flow obstructions not on roof (m)	34.8	34.8
Distance from nearest tree drip line (m)	26	26
Distance to furnace or incinerator flue (m)	No furnace/flue	No furnace/flue
Distance between collocated PM monitors (m)	Not applicable	Not applicable
Unrestricted airflow (deg)	309	309
Probe height (m, agl)	4.2	4.8
Probe material	Aluminum	Aluminum
Residence time (seconds)	Not applicable	Not applicable
Changes in next 18 months?	No	No
Flow rate verification interval	Monthly	Bi-monthly
Audit Date(s)	Not applicable	5/19/25, 11/4/25

Table 13 – Sacramento-Bercut Dr. Meteorological Instruments Operational Data

Site	Sacramento-Bercut Dr.		
Parameter Start Date	10/30/2015	10/30/2015	10/30/2015
Collecting Agency	SMAQMD	SMAQMD	SMAQMD
Analytical Lab	SMAQMD	SMAQMD	SMAQMD
Reporting Agency	SMAQMD	SMAQMD	SMAQMD
Pollutant	Outdoor Temperature	Wind Direction	Wind Speed
Parameter Code	62101	61104	61103
Parameter Occurrence	1	1	1
Manufacturer/Model	Met One T200	Met One 020D	Met One 010C
Sampling Method	Instrumental	Instrumental	Instrumental
Method Code	042	020	020
Analysis Method	Machine Average	Vector Summation	Vector Summation
FRM/FEM/ARM/Other	Other	Other	Other
Monitoring Objective	Public info, research	Public info, research	Public info, research
Statement of Purpose	Measures representative meteorology	Measures representative meteorology	Measures representative meteorology
Monitor Type	Other	Other	Other
Affiliation	Near Road	Near Road	Near Road
Site Type	Not applicable	Not applicable	Not applicable
Spatial Scale	Not applicable	Not applicable	Not applicable
Sampling Frequency	Continuous	Continuous	Continuous
Sampling Season	Year Round	Year Round	Year Round
Distance from Supporting Structure or Roof	No supporting structure	No supporting structure	No supporting structure
Distance from flow obstructions on roof (m)	Not applicable	Not applicable	Not applicable
Distance from flow obstructions not on roof (m)	Not applicable	Not applicable	Not applicable
Distance from nearest tree drip line (m)	Not applicable	Not applicable	Not applicable
Distance to furnace or incinerator flue (m)	No furnace/flue	No furnace/flue	No furnace/flue
Distance between collocated PM monitors (m)	Not applicable	Not applicable	Not applicable
Unrestricted airflow (deg)	309	309	309
Probe height (m, agl)	10.0	10.0	10.0
Probe material	Not applicable	Not applicable	Not applicable
Residence time (seconds)	Not applicable	Not applicable	Not applicable
Changes in next 18 months?	No	No	No
1-pt QC Check frequency	Not applicable	Not applicable	Not applicable
Audit Date(s)	5/19/25	5/19/25	5/19/25

Appendix A.2 Sacramento-Branch Center #2

Sacramento-Branch Center #2 is a PM₁₀ monitoring site. This site was established in 2006 to replace the former Sacramento-Branch Center site, which was approximately one-quarter mile to the north. The site was moved because nearby trees at the previous location obstructed the airflow, and the former monitoring site did not meet siting requirements. The objective of this site is to measure the representative PM₁₀ concentration, as documented in the original site initiation reports filed in the late 1980s.

Table 14 – Sacramento-Branch Center #2 Metadata

Site Name	Sacramento-Branch Center #2
AQS Site Number	06-067-0284
Geographic Coordinates	38.551290°N, 121.336590°W
Location	Rooftop of building in the middle of County Maintenance Yard, located 10 miles east-southeast of downtown Sacramento.
Address	3847 Branch Center Road, Sacramento, CA 95827
County	Sacramento
Metropolitan Statistical Area	Sacramento–Arden-Arcade–Roseville, CA
Distance from Roadway	62 m
Annual Average Daily Traffic (Vehicles/Day)	Bradshaw Rd South of Old Placerville Rd.: 36,504 (SACDOT, 7/6/2022)
Ground Cover	Paved

Figure 9 – Sacramento-Branch Center #2 Site Photo



Figure 10 – Panoramic Photo Looking North from Sacramento-Branch Center #2



Figure 11 – Panoramic Photo Looking East from Sacramento-Branch Center #2



Figure 12 – Panoramic Photo Looking South from Sacramento-Branch Center #2



Figure 13 – Panoramic Photo Looking West from Sacramento-Branch Center #2



Figure 14 – Google Earth satellite image of Sacramento-Branch Center #2



Source: Google Earth, imagery date: 10/26/2025

The circle in Figure 144 indicates no trees exist within a 10 m radius, which satisfy a siting criterion that requires drip lines of trees to be at least 10 m away from probes and inlets (40 CFR Part 58, Appendix E). Heights of the trees are provided in Table 15. Object C and D mark the tallest tree northeast and southeast of the station, respectively.

Table 15 – Object Height Survey at Sacramento-Branch Center #2

Obstacle	Obstacle Height (OH)	Inlet Height (IH)	$2*(OH-IH)$	Obstacle Distance (OD)	Meet Criteria? $2*(OH-IH) \leq OD$
PM ₁₀ (FRM) Sampler					
A: Tree	11.9	6.1	11.6	41.6	Yes
B: Tree	10.5	6.1	8.8	49.8	Yes
C: Tree	21.4	6.1	30.6	57.0	Yes
D: Tree	18.7	6.1	25.2	50.5	Yes

**Units in meters*

Table 16 – Sacramento-Branch Center Particulate Matter Instrument Operational Data

Site	Sacramento-Branch Center
Parameter Start Date	4/1/2006
Collecting Agency	SMAQMD
Analytical Lab	SMAQMD
Reporting Agency	SMAQMD
Pollutant	PM ₁₀
Parameter Code	81102, 85101
Parameter Occurrence	1
Manufacturer/Model	Sierra Anderson 1200
Sampling Method	Hi Volume
Method Code	063
Analysis Method	Gravimetric
FRM/FEM/ARM/Other	FRM
Monitoring Objective	NAAQS comparison, public info
Statement of Purpose	Measures PM ₁₀ concentration
Monitor Type	SLAMS
Affiliation	None
Site Type	Highest concentration
Spatial Scale	Neighborhood
Sampling Frequency	1 in 6 days
Sampling Season	Year Round
Distance from Supporting Structure or Roof	1.6
Distance from flow obstructions on roof (m)	No obstruction
Distance from flow obstructions not on roof (m)	No obstruction
Distance from nearest tree drip line (m)	39
Distance to furnace or incinerator flue (m)	No furnace/flue
Distance between collocated PM monitors (m)	Not collocated
Unrestricted airflow (deg)	360
Probe height (m, agl)	6.1
Probe material	Not applicable
Residence time (seconds)	Not applicable
Changes in next 18 months?	No
Flow rate verification interval	Monthly
Audit Date(s)	4/17/25, 9/25/25

Appendix A.3 Elk Grove-Bruceville Rd.

The Bruceville Rd. air monitoring site is in a rural area 4 miles south of Elk Grove, CA, and 20 miles south of Downtown Sacramento. It was initiated in 1992 to replace the former Sacramento-Meadowview Road O₃ monitoring site.

This site is the upwind O₃ and ozone precursor monitoring site for the Sac Metro Air District's network. Under the legacy PAMS network, it was a Type I site. It is now one of the two additional PAMS enhanced monitoring sites.

Table 17 – Elk Grove-Bruceville Rd. Metadata

Site Name	Elk Grove-Bruceville Rd.
AQS Site Number	06-067-0011
Geographic Coordinates	38.302560°N, 121.420830°W
Location	Rural area located 4 miles south of Elk Grove, CA.
Address	12490 Bruceville Rd, Elk Grove, CA 95758
County	Sacramento
Metropolitan Statistical Area	Sacramento—Arden-Arcade—Roseville, CA
Distance from Roadway	76 m
Annual Average Daily Traffic (Vehicles/Day)	Bruceville Rd north of Lambert Rd.: 3,677 (SACDOT, 9/15/2022)
Ground Cover	Vegetated

Figure 15 – Elk Grove-Bruceville Rd. Site Photo



Figure 16 – Panoramic Photo Looking North from Elk Grove-Bruceville Rd.



Figure 17 – Panoramic Photo Looking East from Elk Grove-Bruceville Rd.



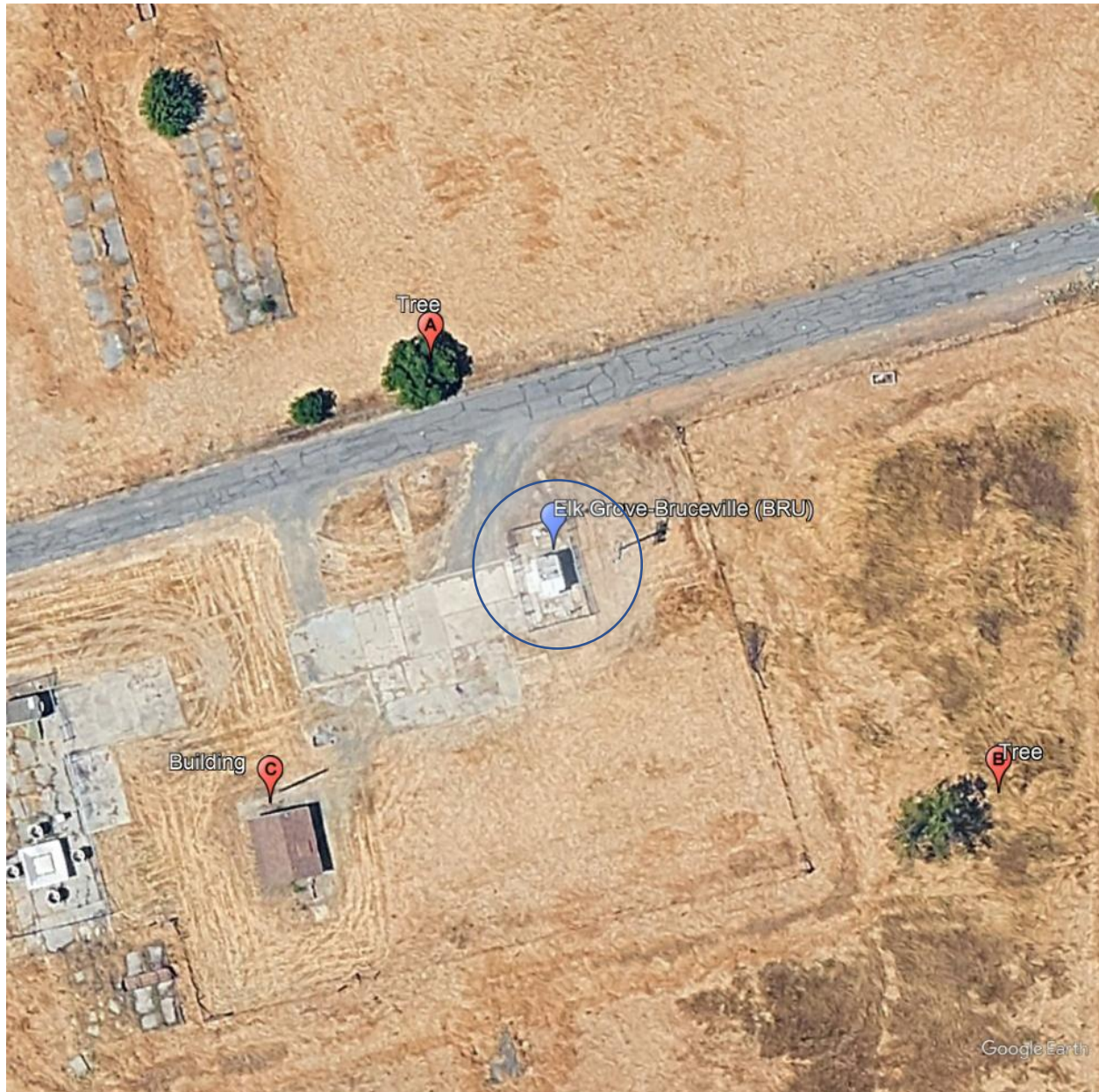
Figure 18 – Panoramic Photo Looking South from Elk Grove-Bruceville Rd.



Figure 19 – Panoramic Photo Looking West from Elk Grove-Bruceville Rd.



Figure 20 – Google Earth satellite image of Elk Grove-Bruceville Rd.



Source: Google Earth, imagery date: 6/27/2024

The circle in Figure 200 indicates no trees exist within a 10 m radius, which satisfy the siting criterion that requires drip lines of trees to be at least 10 m away from probes and inlets (40 CFR Part 58, Appendix E). Heights of the trees are provided in Table 18.

Table 18 – Object Height Survey at Elk Grove-Bruceville Rd.

Obstacle	Obstacle Height (OH)	Inlet Height (IH)	$2*(OH-IH)$	Obstacle Distance (OD)	Meet Criteria? $2*(OH-IH) \leq OD$
Gaseous Manifold Inlet					
A: Tree	5.4	4.6	1.6	24.0	Yes
B: Tree	8.4	4.6	7.6	49.9	Yes
C: Tree	3.6	4.6	-2.0	38.0	Yes
Continuous PM _{2.5} (non-FEM) Sampler					
A: Tree	5.0	5.4	-0.8	24.0	Yes
B: Tree	8.3	5.4	5.8	47.9	Yes
C: Tree	3.6	5.4	-3.6	38.0	Yes
Continuous PM ₁₀ Sampler					
A: Tree	5.4	5.3	0.2	23.0	Yes
B: Tree	9.3	5.3	8.0	49.8	Yes
C: Tree	3.0	5.3	-4.6	37.9	Yes

*Units in meters

Table 19 – Elk Grove-Bruceville Rd. Gaseous Instruments Operational Data

Site	Elk Grove-Bruceville Rd.		
Parameter Start Date	7/1/1992	7/1/1992	7/1/1996
Collecting Agency	SMAQMD	SMAQMD	SMAQMD
Analytical Lab	SMAQMD	SMAQMD	SMAQMD
Reporting Agency	SMAQMD	SMAQMD	SMAQMD
Pollutant	O ₃	NO ₂	Total NMHC
Parameter Code	44201	42602	43102
Parameter Occurrence	1	1	1
Manufacturer/Model	TAPI T400	TAPI T200UP	TEI 55C
Sampling Method	Instrumental	Instrumental	Instrumental
Method Code	087	200	164
Analysis Method	Ultraviolet Absorption	Photolytic-Chemiluminescence	Flame Ionization Detector
FRM/FEM/ARM/Other	FEM	FEM	Other
Monitoring Objective	NAAQS comparison, public info	NAAQS comparison, public info	Public info, research
Statement of Purpose	Measures background O ₃ concentration at upwind site	Measures background ozone precursor concentration	Measures background ozone precursor concentration
Monitor Type	SLAMS	SLAMS	SLAMS
Affiliation	PAMS	PAMS	PAMS
Site Type	Upwind/Background	Upwind/Background	Upwind/Background
Spatial Scale	Urban	Urban	Not applicable
Sampling Frequency	Continuous	Continuous	Continuous
Sampling Season	Year Round	Year Round	Year Round
Distance from Supporting Structure or Roof	1.3	1.3	1.3
Distance from flow obstructions on roof (m)	No obstruction	No obstruction	No obstruction
Distance from flow obstructions not on roof (m)	No obstruction	No obstruction	No obstruction
Distance from nearest tree drip line (m)	24	24	24
Distance to furnace or incinerator flue (m)	No furnace/flue	No furnace/flue	No furnace/flue
Distance between collocated PM monitors (m)	Not applicable	Not applicable	Not applicable
Unrestricted airflow (deg)	360	360	360
Probe height (m, agl)	4.6	4.6	4.6
Probe material	FEP Teflon	FEP Teflon	FEP Teflon
Residence time (seconds)	16.8	12.3	Not Operational
Changes in next 18 months?	No	No	No
1-pt QC Check frequency	Every other day	Every other day	Every other day
Audit Date(s)	5/15/24	10/29/24	N/A ^(A)

^(A) U.S. EPA Region 9 approved the temporary shut down on 12/1/17

Table 20 – Elk Grove-Bruceville Rd. Particulate Matter Instrument Operational Data

Site	Elk Grove-Bruceville Rd.	Elk Grove-Bruceville Rd.
Parameter Start Date	1/30/2003	3/1/2025
Collecting Agency	SMAQMD	SMAQMD
Analytical Lab	SMAQMD	SMAQMD
Reporting Agency	SMAQMD	SMAQMD
Pollutant	PM _{2.5}	PM ₁₀
Parameter Code	88501	81102, 85101
Parameter Occurrence	3	3
Manufacturer/Model	Met One 1020 BAM	Met One 1020 BAM
Sampling Method	Very sharp cut cyclone	Louvered PM ₁₀ inlet
Method Code	731	122
Analysis Method	Beta Attenuation	Beta Attenuation
FRM/FEM/ARM/Other	Other	FEM
Monitoring Objective	Public info ^(A)	NAAQS comparison, public info
Statement of Purpose	Measures background concentration and transport of PM _{2.5} from San Joaquin Valley for PM _{2.5} forecasting	Measures general concentration
Monitor Type	SPM	SLAMS
Affiliation	None	None
Site Type	General/Background	General/Background
Spatial Scale	Urban	Urban
Sampling Frequency	Continuous	Continuous
Sampling Season	Year Round	Year Round
Distance from Supporting Structure or Roof	2.1	2.0
Distance from flow obstructions on roof (m)	No obstruction	No obstruction
Distance from flow obstructions not on roof (m)	No obstruction	No obstruction
Distance from nearest tree drip line (m)	24.0	23.0
Distance to furnace or incinerator flue (m)	No furnace/flue	No furnace/flue
Distance between collocated PM monitors (m)	Not collocated	Not collocated
Unrestricted airflow (deg)	360	360
Probe height (m, agl)	5.4	5.3
Probe material	Not applicable	Not applicable
Residence time (seconds)	Not applicable	Not applicable
Changes in next 18 months?	No	No
Flow rate verification interval	Bi-monthly	Bi-monthly
Audit Date(s)	5/20/25, 11/4/25	5/20/25, 11/4/25

^(A) This PM_{2.5} monitor is operating as a non-FEM sampler

Table 21 – Elk Grove-Bruceville Rd. Meteorological Instruments Operational Data

Site	Elk Grove-Bruceville Rd.			
Parameter Start Date	8/1/1996	8/1/1996	7/1/1997	8/1/1997
Collecting Agency	SMAQMD	SMAQMD	SMAQMD	SMAQMD
Analytical Lab	SMAQMD	SMAQMD	SMAQMD	SMAQMD
Reporting Agency	SMAQMD	SMAQMD	SMAQMD	SMAQMD
Pollutant	Outdoor Temperature	Relative Humidity	Barometric Pressure	Precipitation
Parameter Code	62101	62201	64101	65102
Parameter Occurrence	1	1	1	1
Manufacturer/Model	Met One 060A-2	Met One 083E-0-6	Met One 092	Met One 370C
Sampling Method	Instrumental	Instrumental	Instrumental	Bucket
Method Code	042	012	011	011
Analysis Method	Machine Average	Hygroscopic Plastic Film	Aneroid	Continuous or Incremental
FRM/FEM/ARM/Other	Other	Other	Other	Other
Monitoring Objective	Public info	Public info	Public info	Public info
Statement of Purpose	Measures representative meteorology	Measures representative meteorology	Measures representative meteorology	Measures representative meteorology
Monitor Type	Other	Other	Other	Other
Affiliation	PAMS	PAMS	PAMS	PAMS
Site Type	Not applicable	Not applicable	Not applicable	Not applicable
Spatial Scale	Not applicable	Not applicable	Not applicable	Not applicable
Sampling Frequency	Continuous	Continuous	Continuous	Continuous
Sampling Season	Year Round	Year Round	Year Round	Year Round
Distance from Supporting Structure or Roof	No supporting structure	No supporting structure	No supporting structure	No supporting structure
Distance from flow obstructions on roof (m)	No obstruction	No obstruction	No obstruction	No obstruction
Distance from flow obstructions not on roof (m)	No obstruction	No obstruction	No obstruction	No obstruction
Distance from nearest tree drip line (m)	Not applicable	Not applicable	Not applicable	Not applicable
Distance to furnace or incinerator flue (m)	No furnace/flue	No furnace/flue	No furnace/flue	No furnace/flue
Distance between collocated PM monitors (m)	Not applicable	Not applicable	Not applicable	Not applicable
Unrestricted airflow (deg)	360	360	360	360
Probe height (m, agl)	10.0	10.0	10.0	2.3
Probe material	Not applicable	Not applicable	Not applicable	Not applicable
Residence time (seconds)	Not applicable	Not applicable	Not applicable	Not applicable
Changes in next 18 months?	No	No	No	No
1-pt QC Check frequency	N/A	N/A	N/A	N/A
Audit Date(s)	5/20/25	Not applicable	5/20/25	Not applicable

Table 22 – Elk Grove-Bruceville Rd. Meteorological Instruments Operational Data

Site	Elk Grove-Bruceville Rd.			
Parameter Start Date	8/1/1996	8/1/1997	8/1/1996	8/1/1996
Collecting Agency	SMAQMD	SMAQMD	SMAQMD	SMAQMD
Analytical Lab	SMAQMD	SMAQMD	SMAQMD	SMAQMD
Reporting Agency	SMAQMD	SMAQMD	SMAQMD	SMAQMD
Pollutant	Solar Radiation	UV Radiation	Wind Direction	Wind Speed
Parameter Code	63301	63302	61104	61103
Parameter Occurrence	1	1	1	1
Manufacturer/Model	Campbell Scientific CMP-6	Kipp & Zonen CUV-5	Climatronics 100076S	Climatronics 100075S
Sampling Method	Instrumental	Instrumental	Instrumental	Instrumental
Method Code	011	011	020	020
Analysis Method	Pyranometer	UV Radiometer (Photometer)	Vector Summation	Vector Summation
FRM/FEM/ARM/Other	Other	Other	Other	Other
Monitoring Objective	Public info	Public info	Public info, research	Public info, research
Statement of Purpose	Measures representative meteorology	Measures representative meteorology	Measures representative meteorology	Measures representative meteorology
Monitor Type	Other	Other	Other	Other
Affiliation	PAMS	PAMS	PAMS	PAMS
Site Type	Not applicable	Not applicable	Not applicable	Not applicable
Spatial Scale	Not applicable	Not applicable	Not applicable	Not applicable
Sampling Frequency	Continuous	Continuous	Continuous	Continuous
Sampling Season	Year Round	Year Round	Year Round	Year Round
Distance from Supporting Structure or Roof	No supporting structure	No supporting structure	No supporting structure	No supporting structure
Distance from flow obstructions on roof (m)	No obstruction	No obstruction	No obstruction	No obstruction
Distance from flow obstructions not on roof (m)	No obstruction	No obstruction	No obstruction	No obstruction
Distance from nearest tree drip line (m)	Not applicable	Not applicable	Not applicable	Not applicable
Distance to furnace or incinerator flue (m)	No furnace/flue	No furnace/flue	No furnace/flue	No furnace/flue
Distance between collocated PM monitors (m)	Not applicable	Not applicable	Not applicable	Not applicable
Unrestricted airflow (deg)	360	360	360	360
Probe height (m, agl)	10.0	10.0	10.0	10.0
Probe material	Not applicable	Not applicable	Not applicable	Not applicable
Residence time (seconds)	Not applicable	Not applicable	Not applicable	Not applicable
Changes in next 18 months?	No	No	No	No
1-pt QC Check frequency	N/A	N/A	N/A	N/A
Audit Date(s)	Not applicable	Not applicable	5/20/25	5/20/25

Table 23 – Elk Grove-Bruceville Rd. Meteorological Instruments Operational Data

Site	Elk Grove-Bruceville Rd.
Parameter Start Date	1/17/2018
Collecting Agency	SMAQMD
Analytical Lab	N/A
Reporting Agency	N/A
Pollutant	Mixing Height
Parameter Code	Not applicable
Parameter Occurrence	Not applicable
Manufacturer/Model	Vaisala Ceilometer CL51
Sampling Method	Not applicable
Method Code	Not applicable
Analysis Method	Light Detection and Ranging
FRM/FEM/ARM/Other	Other
Monitoring Objective	Public info, research
Statement of Purpose	Measures representative upper level meteorology
Monitor Type	Other
Affiliation	PAMS
Site Type	Not applicable
Spatial Scale	Not applicable
Sampling Frequency	Continuous
Sampling Season	Year Round
Distance from Supporting Structure or Roof	No supporting structure
Distance from flow obstructions on roof (m)	No obstruction
Distance from flow obstructions not on roof (m)	No obstruction
Distance from nearest tree drip line (m)	> 20 m
Distance to furnace or incinerator flue (m)	No furnace/flue
Distance between collocated PM monitors (m)	Not applicable
Unrestricted airflow (deg)	360
Probe height (m, agl)	Not applicable
Probe material	Not applicable
Residence time (seconds)	Not applicable
Changes in next 18 months?	No
1-pt QC Check frequency	N/A
Audit Date(s)	N/A

Appendix A.4 Sacramento-Del Paso Manor

This air monitoring site was initiated in 1979 and eventually became the largest air monitoring site in the Sacramento Valley Air Basin. This site is also one of the largest in Northern California, in terms of the number of parameters measured. In October 2009, U.S. EPA Region 9 approved Sacramento-Del Paso Manor as an NCore site. This is one of six NCore sites operating in California. Also, Sacramento-Del Paso Manor is a design value site for PM_{2.5}, which means that this site has the highest PM_{2.5} design value in the PM_{2.5} non-attainment area.

Located just downwind of Downtown Sacramento, Sacramento-Del Paso Manor was a PAMS Type II primary site under the legacy PAMS network. It is now one of the 43 national PAMS sites required under the 2015 revision to the O₃ standard.

Speciation monitors at this site are part of the Chemical Speciation Network and Speciated Trends Network. A URG3000N sampler was installed in April 2009. The Met One Spiral Aerosol Speciation Sampler has been in service for many years.

In mid-2025, an old wooden trailer serving as a monitoring station was razed to place a larger, more suitable shelter at the site. Ozone and PM_{2.5} monitoring continued at a temporary trailer several yards away from the old trailer. All other parameters were temporarily discontinued due to space constraints in the temporary trailer. The District sent a letter to EPA on January 7, 2025, advising the temporary shutdown of these parameters (Appendix D).

Figure 21 through Figure 25 and Table 25 show photos and details of the old monitoring equipment that was operating before June 2025. Figure 26 through Figure 30 and Table 26 are of the temporary trailer and equipment operating since June 2025.

Table 24 – Sacramento-Del Paso Manor Metadata

Site Name	Sacramento-Del Paso Manor
AQS Site Number	06-067-0006
Geographic Coordinates	38.613740°N, 121.368040°W
Location	Neighborhood park located 7 miles east-northeast of downtown Sacramento.
Address	2701 Avalon Drive, Sacramento, CA 95821
County	Sacramento
Metropolitan Statistical Area	Sacramento–Arden-Arcade–Roseville, CA
Distance from Roadway	56 m
Annual Average Daily Traffic (Vehicles/Day)	Avalon Dr. south of El Camino Ave: 519 (SACDOT, 11/13/2019)
Ground Cover	Vegetated

Figure 21 –Sacramento-Del Paso Manor Site Photo



Figure 22 – Panoramic Photo Looking North from Sacramento-Del Paso Manor



Figure 23 – Panoramic Photo Looking East from Sacramento-Del Paso Manor



Figure 24 – Panoramic Photo Looking South from Sacramento-Del Paso Manor



Figure 25 – Panoramic Photo Looking West from Sacramento-Del Paso Manor



Figure 26 – Sacramento-Del Paso Manor Site Photo During Construction



Figure 27a – Panoramic Photo Looking North from Del Paso Manor Temporary Trailer

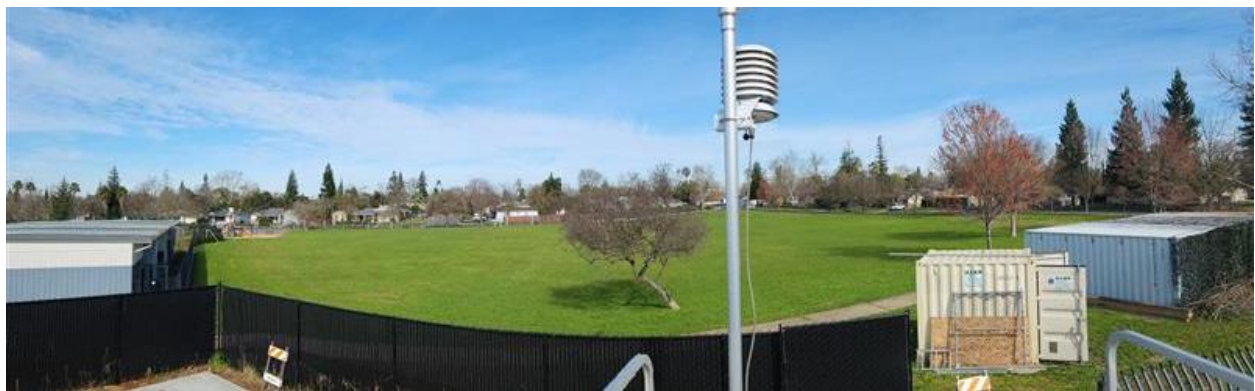


Figure 28 – Panoramic Photo Looking East from Del Paso Manor Temporary Trailer



Figure 29 – Panoramic Photo Looking South Del Paso Manor Temporary Trailer



Figure 30 – Panoramic Photo Looking West from Del Paso Manor Temporary Trailer



Figure 31 – Google Earth Satellite Image of Sacramento-Del Paso Manor



Source: Google Earth, imagery date: 10/26/2025

The circle in Figure 31 indicates no trees exist within a 10 m radius, which satisfy the siting criterion that requires drip lines of trees to be at least 10 m away from probes and inlets (40 CFR Part 58, Appendix E). Heights of the trees and other potential obstacles are provided in Table 25.

Table 25 – Object Height Survey at Sacramento-Del Paso Manor

Obstacle	Obstacle Height (OH)	Inlet Height (IH)	$2*(OH-IH)$	Obstacle Distance (OD)	Meet Criteria? $2*(OH-IH) \leq OD$
Gaseous Manifold Inlet					
A: Tree	4.5	5.4	-1.8	27.0	Yes
B: Tree	8.4	5.4	6.0	39.8	Yes
C: Tree	11.9	5.4	13.0	30.2	Yes
D: Building	5.0	5.4	-0.8	16.0	Yes
E: Tree	14.6	5.4	18.4	38.8	Yes
F: Building	6.1	5.4	1.4	34.0	Yes
Reactive Oxides of Nitrogen Inlet					
A: Tree	5.0	10.0	-10.0	29.0	Yes
B: Tree	8.4	10.0	-3.2	39.8	Yes
C: Tree	11.6	10.0	3.2	31.3	Yes
D: Building	5.0	10.0	-10.0	15.0	Yes
E: Tree	15.1	10.0	10.2	40.8	Yes
F: Building	6.2	10.0	-7.6	37.0	Yes
Black Carbon Inlet					
A: Tree	4.5	5.2	-1.4	27.0	Yes
B: Tree	8.3	5.2	6.2	37.9	Yes
C: Tree	11.9	5.2	13.4	30.2	Yes
D: Building	5.0	5.2	-0.4	17.0	Yes
E: Tree	15.1	5.2	19.8	40.8	Yes
F: Building	6.2	5.2	2.0	36.0	Yes
PM₁₀ (FRM) Sampler – Primary					
A: Tree	5.4	5.3	0.2	26.0	Yes
B: Tree	7.5	5.3	4.4	35.9	Yes
C: Tree	11.7	5.3	12.8	29.2	Yes
D: Building	5.0	5.3	-0.6	15.0	Yes
E: Tree	14.4	5.3	18.2	40.9	Yes
F: Building	6.2	5.3	1.8	37.0	Yes
PM₁₀ (FRM) Sampler – Collocated					
A: Tree	5.0	5.3	-0.6	27.0	Yes
B: Tree	9.7	5.3	8.8	38.7	Yes
C: Tree	12.2	5.3	13.8	29.1	Yes
D: Building	5.0	5.3	-0.6	20.0	Yes
E: Tree	15.1	5.3	19.6	40.9	Yes
F: Building	6.2	5.3	1.8	37.0	Yes
24-hr PM_{2.5} (FRM) Sampler – Primary					
A: Tree	4.5	5.4	-1.8	28.0	Yes
B: Tree	8.5	5.4	6.2	40.8	Yes
C: Tree	11.8	5.4	12.8	32.3	Yes
D: Building	5.0	5.4	-0.8	15.0	Yes
E: Tree	14.4	5.4	18.0	40.9	Yes
F: Building	6.6	5.4	2.4	32.0	Yes

*Units in meters

Table 25 (Continue)

Obstacle	Obstacle Height (OH)	Inlet Height (IH)	2*(OH-IH)	Obstacle Distance (OD)	Meet Criteria? 2*(OH-IH) ≤ OD
24-hr PM _{2.5} (FRM) Sampler – Collocated					
A: Tree	3.9	5.4	-3.0	29.0	Yes
B: Tree	8.6	5.4	6.4	41.8	Yes
C: Tree	11.4	5.4	12.0	30.3	Yes
D: Building	5.0	5.4	-0.8	17.0	Yes
E: Tree	14.6	5.4	18.4	38.8	Yes
F: Building	6.6	5.4	2.4	32.0	Yes
PM ₁₀ (FRM) Sampler – PM Coarse					
A: Tree	3.9	5.4	-3.0	29.0	Yes
B: Tree	7.9	5.4	5.0	41.9	Yes
C: Tree	11.7	5.4	12.6	29.2	Yes
D: Building	5.0	5.4	-0.8	15.0	Yes
E: Tree	14.6	5.4	18.4	38.8	Yes
F: Building	6.7	5.4	2.6	34.0	Yes
Continuous PM _{2.5} (FEM) Sampler					
A: Tree	5.0	5.4	-0.8	30.0	Yes
B: Tree	8.6	5.4	6.4	41.8	Yes
C: Tree	11.2	5.4	11.6	29.3	Yes
D: Building	5.0	5.4	-0.8	18.0	Yes
E: Tree	15.3	5.4	19.8	38.6	Yes
F: Building	6.7	5.4	2.6	33.0	Yes
PM _{2.5} Speciation Sampler					
A: Tree	5.0	5.1	-0.2	29.0	Yes
B: Tree	8.5	5.1	6.8	40.8	Yes
C: Tree	11.0	5.1	11.8	28.4	Yes
D: Building	5.0	5.1	-0.2	20.0	Yes
E: Tree	14.8	5.1	19.4	42.9	Yes
F: Building	6.8	5.1	3.4	35.0	Yes
Carbon Speciation Sampler					
A: Tree	5.0	5.4	-0.8	29.0	Yes
B: Tree	8.7	5.4	6.6	42.8	Yes
C: Tree	12.2	5.4	13.6	34.2	Yes
D: Building	5.0	5.4	-0.8	19.0	Yes
E: Tree	15.4	5.4	20.0	41.7	Yes
F: Building	6.6	5.4	2.4	31.0	Yes

*Units in meters

Table 26 – Object Height Survey at Sacramento-Del Paso Manor’s Temporary Trailer

Obstacle	Obstacle Height (OH)	Inlet Height (IH)	$2*(OH-IH)$	Obstacle Distance (OD)	Meet Criteria? $2*(OH-IH) \leq OD$
Gaseous Manifold Inlet					
A: Tree	6.4	3.8	5.2	20.9	Yes
B: Tree	9.5	3.8	11.4	28.6	Yes
C: Tree	12.5	3.8	17.4	20.7	Yes
D: Building	5.7	3.8	3.8	15.0	Yes
E: Tree	16.5	3.8	25.4	40.4	Yes
F: Building	7.3	3.8	7.0	44.9	Yes
Continuous PM_{2.5} (FEM) Sampler					
A: Tree	6.4	5.2	2.4	20.9	Yes
B: Tree	10.3	5.2	10.2	30.5	Yes
C: Tree	13.6	5.2	16.8	22.4	Yes
D: Building	5.8	5.2	1.2	16.0	Yes
E: Tree	16.8	5.2	23.2	41.3	Yes
F: Building	7.1	5.2	3.8	41.9	Yes

*Units in meters

Table 27 – Sacramento-Del Paso Manor Gaseous Instruments Operational Data

Site	Sacramento-Del Paso Manor				
Parameter Start Date	1/1/1981	1/1/1981	1/1/1981	1/1/1980	1/1/1983
Collecting Agency	SMAQMD	SMAQMD	SMAQMD	SMAQMD	SMAQMD
Analytical Lab	SMAQMD	SMAQMD	SMAQMD	SMAQMD	SMAQMD
Reporting Agency	SMAQMD	SMAQMD	SMAQMD	SMAQMD	SMAQMD
Pollutant	O ₃	O ₃ ^(A)	CO	NO ₂	NOY
Parameter Code	44201	44201	42101	42602	42600
Parameter Occurrence	1	1	1	1	1
Manufacturer/Model	TAPI T400	TAPI T400	TAPI 300U	TAPI T200UP	TEI 42I-Y
Sampling Method	Instrumental	Instrumental	Instrumental	Instrumental	Instrumental
Method Code	087	087	593	200	574
Analysis Method	Ultraviolet Absorption	Ultraviolet Absorption	Gas Filter Correlation	Photolytic-Chemiluminescence	Chemiluminescence
FRM/FEM/ARM/Other	FEM	FEM	FRM	FEM	Other
Monitoring Objective	NAAQS comparison, public info, research	NAAQS comparison, public info, research	NAAQS comparison, public info, research	NAAQS comparison, public info, research	Public info, research
Statement of Purpose	Measures elevated summer O ₃ levels near the downwind edge of the central business district	Measures elevated summer O ₃ levels near the downwind edge of the central business district	Measures representative wintertime CO concentration in populated area	Measures O ₃ precursor emission near downwind edge of central business district	Measures representative concentration in populated area
Monitor Type	SLAMS	SLAMS	SLAMS	SLAMS	SLAMS
Affiliation	NCore, PAMS	NCore, PAMS	NCore	NCore, PAMS	NCore
Site Type	Population Exposure	Population Exposure	Population Exposure	Population Exposure	Population Exposure
Spatial Scale	Neighborhood	Neighborhood	Neighborhood	Neighborhood	Not applicable
Sampling Frequency	Continuous	Continuous	Continuous	Continuous	Continuous
Sampling Season	Year Round	Year Round	Year Round	Year Round	Year Round
Distance from Supporting Structure or Roof	2.1	1.1	2.1	2.1	Not applicable
Distance from flow obstructions on roof (m)	No obstruction	No obstruction	No obstruction	No obstruction	No obstruction
Distance from flow obstructions not on roof (m)	No obstruction	No obstruction	No obstruction	No obstruction	No obstruction
Distance from nearest tree drip line (m)	30	30	30	30	27
Distance to furnace or incinerator flue (m)	No furnace/flue	No furnace/flue	No furnace/flue	No furnace/flue	No furnace/flue
Distance between collocated PM monitors (m)	Not applicable	Not applicable	Not applicable	Not applicable	Not applicable
Unrestricted airflow (deg)	360	360	360	360	360
Probe height (m, agl)	5.4	2.7	5.4	5.4	10.0
Probe material	FEP Teflon	FEP Teflon	FEP Teflon	FEP Teflon	FEP Teflon
Residence time (seconds)	10.6	11.5	6.9	9.6	4.0
Changes in next 18 months?	No	No	No	No	No
1-pt QC Check frequency	Every fourth day	Every other day	Every fourth day	Every fourth day	Every fourth day
Audit Date(s)	6/4/25	6/4/25	6/4/25	6/4/25	Not applicable

^(A) Temporary monitor housed in a temporary trailer during construction of a new shelter

Table 28 – Sacramento-Del Paso Manor Gaseous Instruments Operational Data

Site	Sacramento-Del Paso Manor			
Parameter Start Date	1/1/1980	8/1/1994	9/22/2000	1/1/2001
Collecting Agency	SMAQMD	SMAQMD	SMAQMD	SMAQMD
Analytical Lab	SMAQMD	SMAQMD	AAC Lab	AAC Lab
Reporting Agency	SMAQMD	SMAQMD	SMAQMD	SMAQMD
Pollutant	SO ₂	Total NMHC	Speciated VOC	Carbonyl
Parameter Code	42401	43102	43102	Multiple
Parameter Occurrence	1 (1 hr.), 2 (5-min.)	2	1	1
Manufacturer/Model	TAPI T100U	TEI 55C	Xontech 910A/912	Xontech 925
Sampling Method	Instrumental	Instrumental	6L Pressurized Canister	DNPH Silica gel
Method Code	600	164	123	202
Analysis Method	Ultraviolet Fluorescence	Flame Ionization Detector	Dual Flame Ionization Detector	(multiple)
FRM/FEM/ARM/Other	FEM	Other	Other	Other
Monitoring Objective	NAAQS comparison, public info, research	Public info, research	Research	Research
Statement of Purpose	Measures representative concentration in populated area	Measures O ₃ precursor emission near downwind edge of central business district	Measures O ₃ precursor emission near downwind edge of central business district	Measures O ₃ precursor emission near downwind edge of central business district
Monitor Type	SLAMS	SLAMS	SLAMS	SLAMS
Affiliation	NCore	PAMS	PAMS	PAMS
Site Type	Population Exposure	Population Exposure	Population Exposure	Population Exposure
Spatial Scale	Urban	Not applicable	Not applicable	Not applicable
Sampling Frequency	Continuous	Continuous	1 in 3 days	1 in 3 days
Sampling Season	Year Round	Year Round	July thru Sep	July thru Sep
Distance from Supporting Structure or Roof	2.1	2.1	2.2	2.2
Distance from flow obstructions on roof (m)	No obstruction	No obstruction	No obstruction	No obstruction
Distance from flow obstructions not on roof (m)	No obstruction	No obstruction	No obstruction	No obstruction
Distance from nearest tree drip line (m)	30	28	30	30
Distance to furnace or incinerator flue (m)	No furnace/flue	No furnace/flue	No furnace/flue	No furnace/flue
Distance between collocated PM monitors (m)	Not applicable	Not applicable	Not applicable	Not applicable
Unrestricted airflow (deg)	360	360	360	360
Probe height (m, agl)	5.4	5.4	5.5	5.5
Probe material	FEP Teflon	FEP Teflon	Stainless Steel	Stainless Steel
Residence time (seconds)	9.2	Not Operational	3.0	3.0
Changes in next 18 months?	No	No	Yes	No
1-pt QC Check frequency	Every fourth day	Every fourth day	Pre- and post-seasonally check	Pre- and post-seasonally check
Audit Date(s)	6/4/25	Temporary shutdown ^(A)	Not applicable ^(B)	Not applicable ^(B)

^(A) U.S. EPA Region 9 approved the temporary shut down on 12/1/17 and this monitor is being replaced by an AutoGC monitor; for more information, see Section 3.2

^(B) These instruments are malfunctioning and awaiting replacement after the 2026 station renovation

Table 29 – Sacramento-Del Paso Manor Particulate Matter Instruments Operational Data

Site	Sacramento-Del Paso Manor				
Parameter Start Date	1/1/1998	12/21/2020	12/21/2020	1/1/1986	1/1/1986
Collecting Agency	SMAQMD	SMAQMD	SMAQMD	SMAQMD	SMAQMD
Analytical Lab	SMAQMD	SMAQMD	SMAQMD	SMAQMD	SMAQMD
Reporting Agency	SMAQMD	SMAQMD	SMAQMD	SMAQMD	SMAQMD
Pollutant	Black Carbon	PM _{2.5}	PM _{2.5} ^(B)	PM ₁₀ (Primary monitor)	PM ₁₀ (Audit monitor)
Parameter Code	84313	88101	88101	81102, 85101	81102, 85101
Parameter Occurrence	1	3	3	1	2
Manufacturer/Model	Magee Scientific M633	Met One BAM1020 BAM	Met One BAM1020 BAM	Sierra Anderson 1200	Sierra Anderson 1200
Sampling Method	Aethalometer	Very sharp cut cyclone	Very sharp cut cyclone	Hi Volume	Hi Volume
Method Code	894	170	170	063	063
Analysis Method	Optical Absorption	Beta Attenuation	Beta Attenuation	Gravimetric	Gravimetric
FRM/FEM/ARM/Other	Other	FEM	FEM	FRM	FRM
Monitoring Objective	Research	NAAQS comparison, public info, research	NAAQS comparison, public info, research	NAAQS comparison, public info, research	NAAQS comparison
Statement of Purpose	Originally installed for CRPAQS study in 1999 ^(A)	Measures winter elevated PM level from motor vehicles and residential wood combustion			Collocated for QA purposes and provides substitute data if necessary
Monitor Type	SPM	SLAMS	SLAMS	SLAMS	SLAMS
Affiliation	None	NCore	NCore	None	None
Site Type	Population Exposure	Highest concentration, population exposure		Population Exposure	Population Exposure
Spatial Scale	Not applicable	Neighborhood	Neighborhood	Neighborhood	Neighborhood
Sampling Frequency	Continuous	Continuous	Continuous	1 in 6 days	1 in 6 days
Sampling Season	Year Round	Year Round	Year Round	Year Round	Year Round
Distance from Supporting Structure or Roof	1.9	2.1	2.5	2.0	2.0
Distance from flow obstructions on roof (m)	No obstruction	No obstruction	No obstruction	No obstruction	No obstruction
Distance from flow obstructions not on roof (m)	No obstruction	No obstruction	No obstruction	No obstruction	No obstruction
Distance from nearest tree drip line (m)	30	29	29	23	25
Distance to furnace or incinerator flue (m)	No furnace/flue	No furnace/flue	No furnace/flue	No furnace/flue	No furnace/flue
Distance between collocated PM monitors (m)	Not applicable	Not applicable	Not applicable	2.2 m	2.2 m
Unrestricted airflow (deg)	360	336	336	360	360
Probe height (m, agl)	5.2	5.4	5.2	5.3	5.3
Probe material	Aluminum	Aluminum	Aluminum	Not applicable	Not applicable
Residence time (seconds)	Not applicable	Not applicable	Not applicable	Not applicable	Not applicable
Changes in next 18 months?	No	No	No	Yes	Yes
Flow rate verification interval	Monthly	Bi-monthly	Bi-monthly	Monthly	Monthly
Audit Date(s)	Not applicable	2/12/25, 6/4/25	2/12/25, 6/4/25, 8/19/25	2/12/25, 6/4/25	2/12/25, 6/4/25

(A) California Regional Particulate Air Quality Study

(B) Temporary monitor housed in a temporary trailer during construction of a new shelter

Table 30 – Sacramento-Del Paso Manor Particulate Matter Instruments Operational Data

Site	Sacramento-Del Paso Manor		
Parameter Start Date	1/1/1999	2/1/1999	2/1/2000
Collecting Agency	SMAQMD	SMAQMD	SMAQMD
Analytical Lab	CARB	CARB	RTI
Reporting Agency	CARB	CARB	RTI
Pollutant	PM _{2.5} (Primary monitor)	PM _{2.5} (Audit monitor)	PM _{2.5} Mass Speciated
Parameter Code	88101	88101	88502
Parameter Occurrence	1	2	5
Manufacturer/Model	R & P 2025	R & P 2025	Met One SASS
Sampling Method	Very sharp cut cyclone	Very sharp cut cyclone	Sharp cut cyclone
Method Code	145	145	810
Analysis Method	Gravimetric	Gravimetric	Gravimetric
FRM/FEM/ARM/Other	FRM	FRM	Other
Monitoring Objective	NAAQS Comparison, research, public info	NAAQS Comparison	Research
Statement of Purpose	Measures wintertime elevated PM level from motor vehicles and residential wood combustion	Collocated for QA purposes and provides substitute data if necessary	Provides speciation data on urban PM emission
Monitor Type	SLAMS	SLAMS	SLAMS
Affiliation	NCore	NCore	CSN STN,
Site Type	Highest concentration, population exposure	Highest concentration, population exposure	Highest concentration, population exposure
Spatial Scale	Neighborhood	Neighborhood	Neighborhood
Sampling Frequency	Daily	1 in 12 days	1 in 3 days
Sampling Season	Year Round	Year Round	Year Round
Distance from Supporting Structure or Roof	2.1	2.1	2.1
Distance from flow obstructions on roof (m)	No obstruction	No obstruction	No obstruction
Distance from flow obstructions not on roof (m)	No obstruction	No obstruction	No obstruction
Distance from nearest tree drip line (m)	31	31	25
Distance to furnace or incinerator flue (m)	No furnace/flue	No furnace/flue	No furnace/flue
Distance between collocated PM monitors (m)	1.6 m	1.6 m	Not applicable
Unrestricted airflow (deg)	360	360	360
Probe height (m, agl)	5.4	5.4	5.4
Probe material	Not applicable	Not applicable	Not applicable
Residence time (seconds)	Not applicable	Not applicable	Not applicable
Changes in next 18 months?	No	No	No
Flow rate verification interval	Monthly	Monthly	Monthly
Audit Date(s)	2/12/25, 6/4/25	2/12/25, 6/4/25	6/12/24, 11/27/24

Table 31 – Sacramento-Del Paso Manor Particulate Matter Instruments Operational Data

Site	Sacramento-Del Paso Manor	
Parameter Start Date	4/1/2009	4/1/2012
Collecting Agency	SMAQMD	SMAQMD
Analytical Lab	RTI	CARB
Reporting Agency	RTI	CARB
Pollutant	OC & EC	PM ₁₀
Parameter Code	(multiple) ^(A)	85101
Parameter Occurrence	5	7
Manufacturer/Model	URG 3000N	Partisol 2025i
Sampling Method	Quartz filter and cyclone inlet	Very sharp cut cyclone
Method Code	842, 826	127
Analysis Method	(multiple)	Gravimetric
FRM/FEM/ARM/Other	Other	FRM
Monitoring Objective	Research	Public info, research
Statement of Purpose	Provides speciation data on urban PM emission	Measures PM mass to provide PM _{10-2.5} data
Monitor Type	SLAMS	Other
Affiliation	CSN STN, NCore	None
Site Type	Highest concentration	Population Exposure
Spatial Scale	Neighborhood	Neighborhood
Sampling Frequency	1 in 3 days	1 in 3 days
Sampling Season	Year Round	Year Round
Distance from Supporting Structure or Roof	2.1	2.1
Distance from flow obstructions on roof (m)	No obstruction	No obstruction
Distance from flow obstructions not on roof (m)	No obstruction	No obstruction
Distance from nearest tree drip line (m)	27	26
Distance to furnace or incinerator flue (m)	No furnace/flue	No furnace/flue
Distance between collocated PM monitors (m)	Not applicable	Not applicable
Unrestricted airflow (deg)	360	360
Probe height (m, agl)	5.4	5.4
Probe material	Not applicable	Not applicable
Residence time (seconds)	Not applicable	Not applicable
Changes in next 18 months?	No	No
Flow rate verification interval	Monthly	Monthly
Audit Date(s)	6/12/24, 11/27/24	2/12/25, 6/4/25

^(A) 88355, 88357, 88370, 88374, 88375, 88376, 88377, 88378, 88380, 88383, 88384, 88385, 88388

Table 32 – Sacramento-Del Paso Manor Meteorological Instruments Operational Data

Site	Sacramento-Del Paso Manor				
Parameter Start Date	8/1/1994	8/1/1994	9/1/1994	8/1/1994	8/1/1994
Collecting Agency	SMAQMD	SMAQMD	SMAQMD	SMAQMD	SMAQMD
Analytical Lab	SMAQMD	SMAQMD	SMAQMD	SMAQMD	SMAQMD
Reporting Agency	SMAQMD	SMAQMD	SMAQMD	SMAQMD	SMAQMD
Pollutant	Outdoor Temperature	Relative Humidity	Solar Radiation	Wind Direction	Wind Speed
Parameter Code	62101	62201	63301	61104	61103
Parameter Occurrence Code	1	1	1	1	1
Manufacturer/Model	Met One 060A-2	Met One 083E-0-6	Eppley Lab 8-48	Climatronics 100076	Climatronics 100075
Sampling Method	Instrumental	Instrumental	Instrumental	Instrumental	Instrumental
Method Code	042	012	011	020	020
Analysis Method	Machine Average	Hygroscopic Plastic Film	Pyranometer	Vector Summation	Vector Summation
FRM/FEM/ARM/Other	Other	Other	Other	Other	Other
Monitoring Objective	Public info, research	Public info, research	Public info	Public info, research	Public info, research
Statement of Purpose	Measures representative meteorology	Measures representative meteorology	Measures representative meteorology	Measures representative meteorology	Measures representative meteorology
Monitor Type	SLAMS	SLAMS	Other	Other	Other
Affiliation	NCore, PAMS				
Site Type	Not applicable	Not applicable	Not applicable	Not applicable	Not applicable
Spatial Scale	Not applicable	Not applicable	Not applicable	Not applicable	Not applicable
Sampling Frequency	Continuous	Continuous	Continuous	Continuous	Continuous
Sampling Season	Year Round	Year Round	Year Round	Year Round	Year Round
Distance from Supporting Structure or Roof	No supporting structure	No supporting structure	No supporting structure	No supporting structure	No supporting structure
Distance from flow obstructions on roof (m)	No obstruction	No obstruction	No obstruction	No obstruction	No obstruction
Distance from flow obstructions not on roof (m)	No obstruction	No obstruction	No obstruction	No obstruction	No obstruction
Distance from nearest tree drip line (m)	Not applicable	Not applicable	Not applicable	Not applicable	Not applicable
Distance to furnace or incinerator flue (m)	No furnace/flue	No furnace/flue	No furnace/flue	No furnace/flue	No furnace/flue
Distance between collocated PM monitors (m)	Not applicable	Not applicable	Not applicable	Not applicable	Not applicable
Unrestricted airflow (deg)	360	360	360	360	360
Probe height (m, agl)	10.0	10.0	10.0	10.0	10.0
Probe material	Not applicable	Not applicable	Not applicable	Not applicable	Not applicable
Residence time (seconds)	Not applicable	Not applicable	Not applicable	Not applicable	Not applicable
Changes in next 18 months?	No	No	No	No	No
1-pt QC Check frequency	Not applicable	Not applicable	Not applicable	Not applicable	Not applicable
Audit Date(s)	6/4/25	Not applicable	Not applicable	6/4/25	6/4/25

Appendix A.5 Folsom-Natoma St.

This site has been in operation since 1996. This site replaced the former Folsom-Leidesdorff Street site. Approximately 20 miles northeast of Downtown Sacramento, Folsom-Natoma St. site is the maximum summertime O₃ monitoring site within Sacramento County for days with prevailing afternoon southwesterly winds. This was a PAMS Type III site under the legacy PAMS network. It is now one of the two additional PAMS enhanced monitoring sites.

From mid-2019 through most of 2020, this air monitoring station was demolished and re-constructed to replace the 20-30 years old wooden shelter. The new shelter now sits in the footprint of the old shelter.

Table 33 – Folsom-Natoma St. Metadata

Site Name	Folsom-Natoma Street
AQS Site Number	06-067-0012
Geographic Coordinates	38.683304°N, 121.164457°W
Location	Folsom City Hall (parking lot), located 20 miles east-northeast of downtown Sacramento.
Address	50 Natoma Street, Folsom, CA 95630
County	Sacramento
Metropolitan Statistical Area	Sacramento–Arden-Arcade–Roseville, CA
Distance from Roadway	206 m
Annual Average Daily Traffic (Vehicles/Day)	Natoma St. at Coloma St (intersection total): 14,628 (City of Folsom, 2017)
Ground Cover	Vegetated

Figure 32 – Folsom-Natoma St. Site Photo



Figure 33 – Panoramic Photo Looking North from Folsom-Natoma St.



Figure 34 – Panoramic Photo Looking East from Folsom-Natoma St.



Figure 35 – Panoramic Photo Looking South from Folsom-Natoma St.



Figure 36 – Panoramic Photo Looking West from Folsom-Natoma St.



Figure 37 – Google Earth Satellite Image of Folsom-Natoma St.



Source: Google Earth, imagery date: 1/28/2024

The circle over Folsom-Natoma St. in Figure 37 indicates no trees exist within a 10 m radius, which satisfy the siting criterion that requires drip lines of trees to be at least 10 m away from probes and inlets (40 CFR Part 58, Appendix E). Heights of the trees and other potential obstacles are provided in Table 34.

Table 34 – Object Height Survey At Folsom-Natoma St.

Obstacle	Obstacle Height (OH)	Inlet Height (IH)	2*(OH-IH)	Obstacle Distance (OD)	Meet Criteria? 2*(OH-IH) ≤ OD
Gaseous Manifold Inlet					
A: Tower	N/A	5.5	N/A	N/A	N/A ^(A)
B: Building	2.6	5.5	-5.8	10.8	Yes
C: Building	2.7	5.5	-5.6	8.7	Yes
D: Building	2.7	5.5	-5.6	4.5	Yes
E: Building	3.3	5.5	-4.4	9.9	Yes
F: Tree	7.8	5.5	4.6	18.8	Yes
G: Tree	7.7	5.5	4.4	32.9	Yes
H: Tree	8.8	5.5	6.6	24.7	Yes
I: Tree	7.5	5.5	4.0	29.9	Yes
Continuous PM_{2.5} (FEM) Sampler – Primary					
A: Tower	N/A	5.5	N/A	N/A	N/A ^(A)
B: Building	2.4	5.4	-6.0	9.7	Yes
C: Building	2.6	5.4	-5.6	7.7	Yes
D: Building	2.5	5.4	-5.8	4.4	Yes
E: Building	3.4	5.4	-4.0	8.9	Yes
F: Tree	8.1	5.4	5.4	20.7	Yes
G: Tree	7.6	5.4	4.4	30.9	Yes
H: Tree	8.9	5.4	7.0	25.7	Yes
I: Tree	7.0	5.4	3.2	24.9	Yes
Continuous PM_{2.5} (FEM) Sampler – Collocated					
A: Tower	N/A	5.5	N/A	N/A	N/A ^(A)
B: Building	3.5	5.4	-3.8	6.9	Yes
C: Building	2.6	5.4	-5.6	9.7	Yes
D: Building	2.4	5.4	-6.0	9.7	Yes
E: Building	2.7	5.4	-5.4	5.6	Yes
F: Tree	7.6	5.4	4.4	19.8	Yes
G: Tree	7.6	5.4	4.4	31.9	Yes
H: Tree	9.2	5.4	7.6	27.7	Yes
I: Tree	6.9	5.4	3.0	23.9	Yes

*Units in meters

^(A)This open lattice tower does not affect air flow

Table 35 – Folsom-Natoma St. Gaseous Instruments Operational Data

Site	Folsom-Natoma St.		
Parameter Start Date	7/1/1996	7/1/1996	7/1/1996
Collecting Agency	SMAQMD	SMAQMD	SMAQMD
Analytical Lab	SMAQMD	SMAQMD	SMAQMD
Reporting Agency	SMAQMD	SMAQMD	SMAQMD
Pollutant	O ₃	NO ₂	Total NMHC
Parameter Code	44201	42602	43102
Parameter Occurrence	1	1	1
Manufacturer/Model	TAPI T400	TAPI T200UP	TEI 55C
Sampling Method	Instrumental	Instrumental	Instrumental
Method Code	087	200	164
Analysis Method	Ultraviolet Absorption	Photolytic-Chemiluminescence	Flame Ionization Detector
FRM/FEM/ARM/Other	FEM	FEM	Other
Monitoring Objective	NAAQS comparison, public info	NAAQS comparison, public info	Public info, research
Statement of Purpose	Measure highest summer O ₃ level downwind of urban area	Measures concentration downwind of urban area	Measures concentration downwind of urban area
Monitor Type	SLAMS	SLAMS	SLAMS
Affiliation	PAMS	PAMS	PAMS
Site Type	Max O ₃ Concentration, Population Exposure	Highest concentration	Highest concentration
Spatial Scale	Neighborhood	Neighborhood	Not applicable
Sampling Frequency	Continuous	Continuous	Continuous
Sampling Season	Year Round	Year Round	Year Round
Distance from Supporting Structure or Roof	2.3	2.3	2.3
Distance from flow obstructions on roof (m)	No obstruction	No obstruction	No obstruction
Distance from flow obstructions not on roof (m)	No obstruction	No obstruction	No obstruction
Distance from nearest tree drip line (m)	20	20	15.5
Distance to furnace or incinerator flue (m)	No furnace/flue	No furnace/flue	No furnace/flue
Distance between collocated PM monitors (m)	Not applicable	Not applicable	Not applicable
Unrestricted airflow (deg)	360	360	360
Probe height (m, agl)	5.5	5.5	5.5
Probe material	FEP Teflon	FEP Teflon	FEP Teflon
Residence time (seconds)	18.7	18.2	Not Operational
Changes in next 18 months?	No	No	No
1-pt QC Check frequency	Every other day	Every other day	Every other day
Audit Date(s)	5/21/25	5/1/24 ^(A)	Temp. shutdown ^(B)

^(A) Analyzer malfunctioned before the routine audit

^(B) U.S. EPA Region 9 approved the temporary shut down on 12/1/17

Table 36 – Folsom-Natoma St. Particulate Matter Instruments Operational Data

Site	Folsom-Natoma St.	
Parameter Start Date	4/1/2013	7/1/2015
Collecting Agency	SMAQMD	SMAQMD
Analytical Lab	SMAQMD	SMAQMD
Reporting Agency	SMAQMD	SMAQMD
Pollutant	PM _{2.5} (Primary monitor)	PM _{2.5} (Audit monitor)
Parameter Code	88101	88101
Parameter Occurrence	3	4
Manufacturer/Model	Met One 1020 BAM	Met One 1020 BAM
Sampling Method	Very sharp cut cyclone	Very sharp cut cyclone
Method Code	170	170
Analysis Method	Beta Attenuation	Beta Attenuation
FRM/FEM/ARM/Other	FEM	FEM
Monitoring Objective	NAAQS comparison, public info, research	NAAQS comparison, public info, research
Statement of Purpose	Measures representative concentration	Collocated for QA purpose and provides substitute data if necessary
Monitor Type	SLAMS	SLAMS
Affiliation	None	None
Site Type	Population Exposure	Population Exposure
Spatial Scale	Neighborhood	Neighborhood
Sampling Frequency	Continuous	Continuous
Sampling Season	Year Round	Year Round
Distance from Supporting Structure or Roof	2.2	2.2
Distance from flow obstructions on roof (m)	No obstruction	No obstruction
Distance from flow obstructions not on roof (m)	No obstruction	No obstruction
Distance from nearest tree drip line (m)	18	16
Distance to furnace or incinerator flue (m)	No furnace/flue	No furnace/flue
Distance between collocated PM monitors (m)	1.8	1.8
Unrestricted airflow (deg)	360	360
Probe height (m, agl)	5.4	5.4
Probe material	Aluminum	Aluminum
Residence time (seconds)	Not applicable	Not applicable
Changes in next 18 months?	No	No
Flow rate verification interval	Bi-monthly	Bi-monthly
Audit Date(s)	5/21/25, 11/2/25	5/21/25, 11/2/25

Table 37 – Folsom-Natoma St. Meteorological Instruments Operational Data

Site	Folsom-Natoma St.				
Parameter Start Date	7/1/1996	7/1/1996	7/1/1996	7/1/1996	7/1/1996
Collecting Agency	SMAQMD	SMAQMD	SMAQMD	SMAQMD	SMAQMD
Analytical Lab	SMAQMD	SMAQMD	SMAQMD	SMAQMD	SMAQMD
Reporting Agency	SMAQMD	SMAQMD	SMAQMD	SMAQMD	SMAQMD
Pollutant	Outdoor Temperature	Relative Humidity	Solar Radiation	Wind Direction	Wind Speed
Parameter Code	62101	62201	63301	61104	61103
Parameter Occurrence	1	1	1	1	1
Manufacturer/Model	Met One T-200	Met One 083E-0-6	Prede PCM-01N	Met One 020D	Met One 010C
Sampling Method	Instrumental	Instrumental	Instrumental	Instrumental	Instrumental
Method Code	042	012	011	020	020
Analysis Method	Machine Average	Hygroscopic Plastic Film	Pyranometer	Vector Summation	Vector Summation
FRM/FEM/ARM/Other	Other	Other	Other	Other	Other
Monitoring Objective	Public info	Public info	Public info	Public info, research	Public info, research
Statement of Purpose	Measures representative meteorology	Measures representative meteorology	Measures representative meteorology	Measures representative meteorology	Measures representative meteorology
Monitor Type	SLAMS	SLAMS	SLAMS	SLAMS	SLAMS
Affiliation	PAMS	PAMS	PAMS	PAMS	PAMS
Site Type	Not applicable	Not applicable	Not applicable	Not applicable	Not applicable
Spatial Scale	Not applicable	Not applicable	Not applicable	Not applicable	Not applicable
Sampling Frequency	Continuous	Continuous	Continuous	Continuous	Continuous
Sampling Season	Year Round	Year Round	Year Round	Year Round	Year Round
Distance from Supporting Structure or Roof	No supporting structure	No supporting structure	No supporting structure	No supporting structure	No supporting structure
Distance from flow obstructions on roof (m)	No obstruction	No obstruction	No obstruction	No obstruction	No obstruction
Distance from flow obstructions not on roof (m)	No obstruction	No obstruction	No obstruction	No obstruction	No obstruction
Distance from nearest tree drip line (m)	Not applicable	Not applicable	Not applicable	Not applicable	Not applicable
Distance to furnace or incinerator flue (m)	No furnace/flue	No furnace/flue	No furnace/flue	No furnace/flue	No furnace/flue
Distance between collocated PM monitors (m)	Not applicable	Not applicable	Not applicable	Not applicable	Not applicable
Unrestricted airflow (deg)	360	360	360	360	360
Probe height (m, agl)	10.0	10.0	10.0	10.0	10.0
Probe material	Not applicable	Not applicable	Not applicable	Not applicable	Not applicable
Residence time (seconds)	Not applicable	Not applicable	Not applicable	Not applicable	Not applicable
Changes in next 18 months?	No	No	No	No	No
1-pt QC Check frequency	N/A	N/A	N/A	N/A	N/A
Audit Date(s)	5/21/25	Not applicable	Not applicable	5/21/25	5/21/25

Appendix A.6 Sloughhouse

Sloughhouse is located in a rural area 16.5 miles southeast of Downtown Sacramento. It was established in 1997 as a seasonal (April-October) O₃ special purpose monitoring site to measure elevated O₃ concentrations under northwesterly winds. Sloughhouse was sited to cover “data gaps” in the O₃ monitoring network, which supports the Spare the Air program and summer AQI forecasting. It became a permanent, year-round monitoring site in May 2011 after meeting federal siting criteria.

From November 2008 through February 2013, seasonal (November–February) PM_{2.5} data was collected with a special purpose monitor (Met One Instruments e-BAM). In November 2013, a non-FEM PM_{2.5} sampler was installed to improve data quality. The sampling season was also increased to year round. In June 2017, a FEM PM_{2.5} sampler replaced the non-FEM sampler.

Table 38 – Sloughhouse Metadata

Site Name	Sloughhouse
AQS Site Number	06-067-5003
Geographic Coordinates	38.494475°N, W121.211131°
Location	Fire Station in rural area located 16.5 miles east-southeast of downtown Sacramento.
Address	7250 Sloughhouse Road, Sloughhouse, CA 95683
County	Sacramento
Metropolitan Statistical Area	Sacramento–Arden-Arcade–Roseville, CA
Distance from Roadway	27 m
Annual Average Daily Traffic (Vehicles/Day)	Sloughhouse Rd south of Jackson Rd: 1,000 (Estimated)
Ground Cover	Vegetated

Figure 38 – Sloughhouse Site Photo

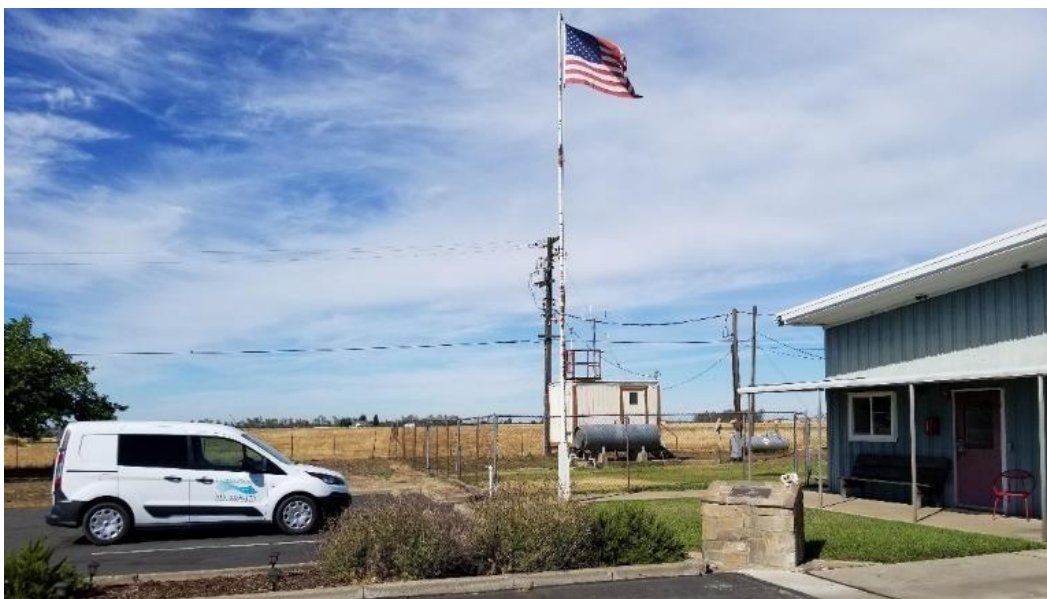


Figure 39 – Panoramic Photo Looking North from Sloughouse



Figure 40 – Panoramic Photo Looking East from Sloughouse

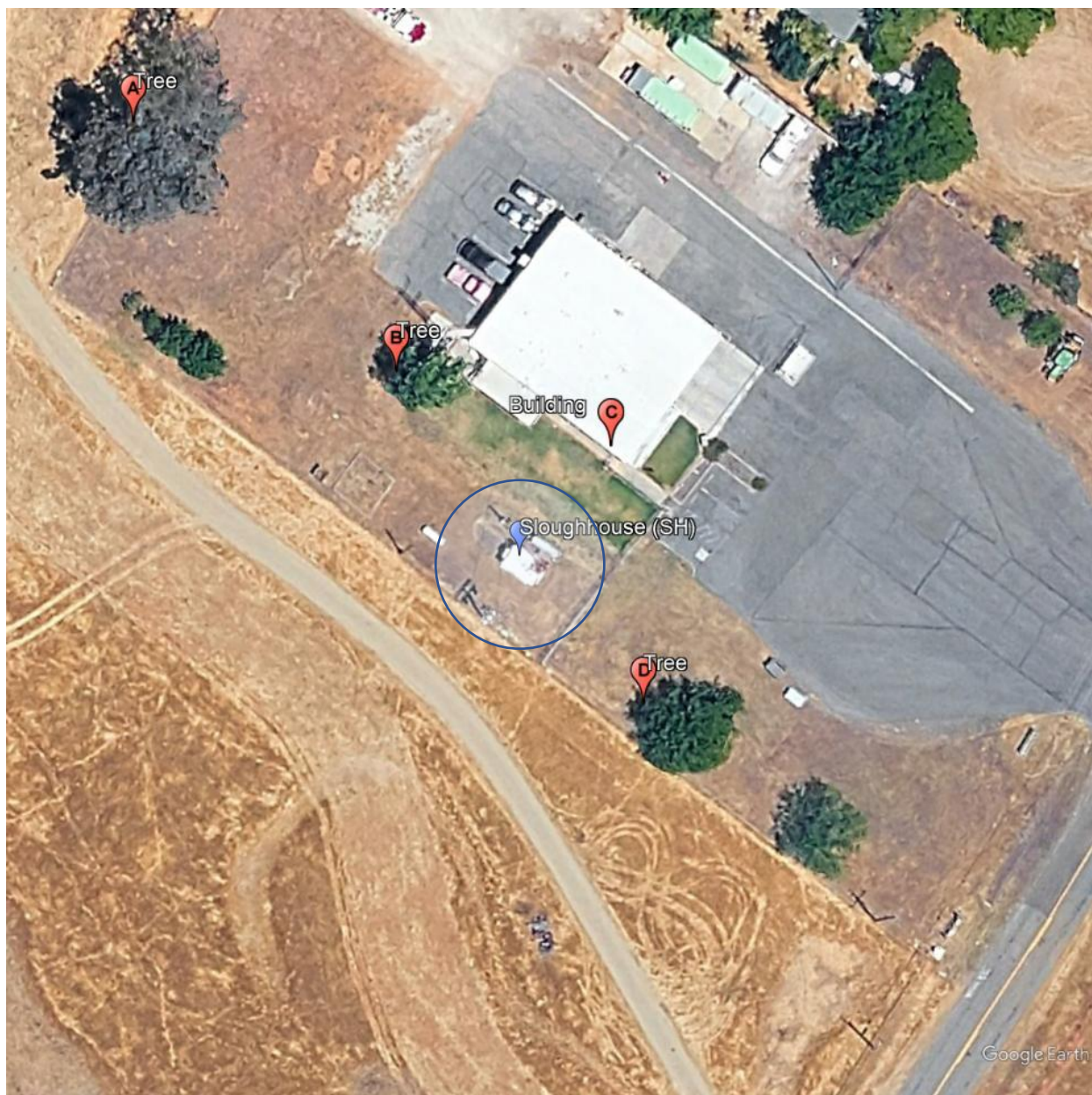


Figure 41 – Panoramic Photo Looking South from Sloughouse



Figure 42 – Panoramic Photo Looking West from Sloughouse



Figure 43 – Google Earth Satellite Image of Sloughouse

Source: Google Earth, imagery date: 6/7/2024

The circle in Figure 43 indicates no trees exist within a 10 m radius, which satisfy the siting criterion that requires drip lines of trees to be at least 10 m away from probes and inlets (40 CFR Part 58, Appendix E). Height of the trees and buildings are provided in Table 39.

Table 39 – Object Height Survey at Sloughouse

Obstacle	Obstacle Height (OH)	Inlet Height (IH)	$2*(OH-IH)$	Obstacle Distance (OD)	Meet Criteria? $2*(OH-IH) \leq OD$
Gaseous Manifold Inlet					
A: Tree	16.1	4.9	22.4	52.8	Yes
B: Tree	12.7	4.9	15.6	22.7	Yes
C: Building	1.7	4.9	-6.4	14.7	Yes
D: Tree	6.1	4.9	2.4	23.0	Yes
Continuous PM_{2.5} (FEM) Sampler					
A: Tree	15.2	5.4	19.6	53.0	Yes
B: Tree	11.6	5.4	12.4	20.9	Yes
C: Building	1.6	5.4	-7.6	15.2	Yes
D: Tree	6.5	5.4	2.2	22.9	Yes

**Units in meters*

Table 40 – Sloughhouse Gaseous and Meteorological Instruments Operational Data

Site	Sloughhouse		
Parameter Start Date	7/1/1997	7/1/1997	7/1/1997
Collecting Agency	SMAQMD	SMAQMD	SMAQMD
Analytical Lab	SMAQMD	SMAQMD	SMAQMD
Reporting Agency	SMAQMD	SMAQMD	SMAQMD
Pollutant	O ₃	Wind Direction	Wind Speed
Parameter Code	44201	61104	61103
Parameter Occurrence	1	1	1
Manufacturer/Model	TAPI T400	Met One 020D	Met One 010C
Sampling Method	Instrumental	Instrumental	Instrumental
Method Code	087	020	020
Analysis Method	Ultraviolet Absorption	Vector Summation	Vector Summation
FRM/FEM/ARM/Other	FEM	Other	Other
Monitoring Objective	NAAQS comparison, public info	Public info	Public info
Statement of Purpose	Measures elevated O ₃ concentration under northwesterly wind	Measures representative meteorology	Measures representative meteorology
Monitor Type	SLAMS	Other	Other
Affiliation	None	None	None
Site Type	Max O ₃ concentration	Not applicable	Not applicable
Spatial Scale	Neighborhood	Not applicable	Not applicable
Sampling Frequency	Continuous	Continuous	Continuous
Sampling Season	Year Round	Year Round	Year Round
Distance from Supporting Structure or Roof	1.7	2.8	2.8
Distance from flow ob- structions on roof (m)	No obstruction	No obstruction	No obstruction
Distance from flow ob- structions not on roof (m)	No obstruction	No obstruction	No obstruction
Distance from nearest tree drip line (m)	20	20	20
Distance to furnace or incinerator flue (m)	No furnace/flue	No furnace/flue	No furnace/flue
Distance between collo- cated PM monitors (m)	Not applicable	Not applicable	Not applicable
Distance with nearest PM monitor (m)	1.5 m (lo vol)	Not applicable	Not applicable
Unrestricted airflow (deg)	360	360	360
Probe height (m, agl)	5.0	6.1	6.1
Probe material	FEP Teflon	Not applicable	Not applicable
Residence time (seconds)	10.1	Not applicable	Not applicable
Changes in next 18 months?	No	No	No
1-pt QC Check frequency	Every other day	N/A	N/A
Audit Date(s)	4/29/25	4/29/25	4/29/25

Table 41 – Sloughouse Particulate Matter Instrument Operational Data

Site	Sloughouse
Parameter Start Date	5/1/2017
Collecting Agency	SMAQMD
Analytical Lab	N/A
Reporting Agency	CARB
Pollutant	PM _{2.5}
Parameter Code	88101
Parameter Occurrence	3
Manufacturer/Model	Met One 1020 BAM
Sampling Method	Very sharp cut cyclone
Method Code	170
Analysis Method	Beta Attenuation
FRM/FEM/ARM/Other	FEM
Monitoring Objective	NAAQS comparison, public info, research
Statement of Purpose	Measures rural, background PM _{2.5} concentration
Monitor Type	SLAMS
Affiliation	None
Site Type	Upwind/Background
Spatial Scale	Urban
Sampling Frequency	Continuous
Sampling Season	Year Round
Distance from Supporting Structure or Roof	2.2
Distance from flow obstructions on roof (m)	No obstruction
Distance from flow obstructions not on roof (m)	No obstruction
Distance from nearest tree drip line (m)	18
Distance to furnace or incinerator flue (m)	No furnace/flue
Distance between collocated PM monitors (m)	Not collocated
Distance with nearest PM monitor (m)	Not applicable
Unrestricted airflow (deg)	360
Probe height (m, agl)	5.2
Probe material	Not applicable
Residence time (seconds)	Not applicable
Changes in next 18 months?	No
Flow rate verification interval	Bi-monthly
Audit Date(s)	4/29/25, 10/13/25

Appendix A.7 Sacramento-T Street

The Sacramento-T Street site is operated by the California Air Resources Board/Monitoring and Laboratory Division/Special Purpose Monitoring Section. This site has been operating since 1989.

Table 42 – Sacramento-T Street Metadata

Site Name	Sacramento-T Street
AQS Site No.	06-067-0010
Geographic Coordinates	38.568440°N, 121.4931190°W
Location	Residential area located in downtown Sacramento
Address	1309 T Street, Sacramento, CA 95814
County	Sacramento
Representative Area (MSA)	Sacramento-Arden, Arcade-Roseville, CA
Distance from roadway	30 m
Annual Average Daily Traffic (Vehicles/Day)	T St. at 13 th St.: 4,061 (City of Sacramento, 2019)
Ground Cover	Rooftop site (residential area is paved)

Table 43 – Sacramento-T Street Gaseous Instruments Operational Data

Site	Sacramento-T St.	
Parameter Start Date	12/1/1998	4/28/2020
Collecting Agency	CARB	CARB
Analytical Lab	N/A	N/A
Reporting Agency	CARB	CARB
Pollutant	O ₃	NO ₂
Parameter Code	44201	42602
Parameter Occurrence	1	1
Manufacturer/Model	TAPI 400E/T400	THERMO 42/42c/42i
Sampling Method	Instrumental	Instrumental
Method Code	087	074
Analysis Method	Ultraviolet Absorption	Chemiluminescence
FRM/FEM/ARM/Other	FEM	FEM
Monitoring Objective	NAAQS comparison, public info	NAAQS comparison, public info
Statement of Purpose	Measures representative concentration in urban area	Measures representative concentration in urban area
Monitor Type	SLAMS	SLAMS
Affiliation	None	None
Site Type	Upwind/Background	Population Exposure
Spatial Scale	Urban	Neighborhood
Sampling Frequency	Continuous	Continuous
Sampling Season	Year Round	Year Round
Distance from Supporting Structure or Roof	3.0	3.0
Distance from flow obstructions on roof (m)	No obstruction	No obstruction
Distance from flow obstructions not on roof (m)	No obstruction	No obstruction
Distance from nearest tree drip line (m)	15 – 25 m	15 – 25 m
Distance to furnace or incinerator flue (m)	No furnace/flue	No furnace/flue
Distance between collocated PM monitors (m)	Not applicable	Not applicable
Distance with nearest PM monitor (m)	1.0 – 2.0 m	1.0 – 2.0 m
Unrestricted airflow (deg)	360	360
Probe height (m, agl)	11.7	11.7
Probe material	FEP Teflon	FEP Teflon
Residence time (seconds)	5.4	6.0
Changes in next 18 months?	No	No
1-pt QC Check frequency	Daily	Daily
Audit Date(s)	4/2/25	4/2/25

Table 44 – Sacramento-T Street Particulate Matter Instruments Operational Data

Site	Sacramento-T Street			
Parameter Start Date	5/1/2013	1/14/2020	12/11/2020	4/1/2021
Collecting Agency	CARB	CARB	CARB	CARB
Analytical Lab	CARB	CARB	CARB	CARB
Reporting Agency	CARB	CARB	CARB	CARB
Pollutant	PM ₁₀	PM _{2.5} Mass	PM _{2.5}	PM _{2.5}
Parameter Code	81102	88502	88101	88101
Parameter Occurrence	4	5	3	2
Manufacturer/Model	Met One 4 Models	Met One SASS	Met One 1020	THERMO 2000i
Sampling Method	Instrumental	Low volume with VSCC	Low volume with VSCC	Low volume with VSCC
Method Code	122	810	170	143
Analysis Method	Beta Attenuation	Gravimetric	Beta Attenuation	Gravimetric
FRM/FEM/ARM/Other	FEM	Other	FEM	FRM
Monitoring Objective	NAAQS comparison, public info	Research	NAAQS comparison, public info	NAAQS comparison, public info
Statement of Purpose	Measures representative concentration in urban area	Provide speciation data of urban emission	Measures representative concentration in urban area	Measures representative concentration in urban area
Monitor Type	SLAMS	SLAMS	SLAMS	SLAMS
Affiliation	None	None	None	None
Site Type	Population Exposure	Highest concentration	Population Exposure, highest	Population exposure
Spatial Scale	Neighborhood	Neighborhood	Neighborhood	Neighborhood
Sampling Frequency	Continuous	1 in 6 days	Continuous	1 in 12 days
Sampling Season	Year Round	Year Round	Year Round	Year Round
Distance from Supporting Structure or Roof	2.0	2.0	2.0	2.0
Distance from flow obstructions on roof (m)	No obstruction	No obstruction	No obstruction	No obstruction
Distance from flow obstructions not on roof (m)	No obstruction	No obstruction	No obstruction	No obstruction
Distance from nearest tree drip line (m)	15 – 25 m	15 – 25 m	15 – 25 m	15 – 25 m
Distance to furnace or incinerator flue (m)	No furnace/flue	No furnace/flue	No furnace/flue	No furnace/flue
Distance between collocated PM monitors (m)	1.0 – 2.0 m	1.0 – 2.0 m	1.0 – 2.0 m	1.0 – 2.0 m
Distance with nearest PM monitor (m)	1.0 – 2.0 m	1.0 – 2.0 m	1.0 – 2.0 m	1.0 – 2.0 m
Unrestricted airflow (deg)	360	360	360	360
Probe height (m, agl)	10.0	10.0	10.0	10.0
Probe material	Not applicable	Not applicable	Not applicable	Not applicable
Residence time (seconds)	Not applicable	Not applicable	Not applicable	Not applicable
Changes in next 18 months?	No	No	No	No
Flow rate verification interval	Bi-Monthly	Monthly	Bi-Monthly	Monthly
Audit Date(s)	2/18/25, 8/14/25	Not applicable	2/18/25, 8/14/25	2/18/25, 8/14/25

Table 45 – Sacramento-T Street Meteorological Instruments Operational Data

Site	Sacramento-T Street			
Parameter Start Date	7/1/2015	7/1/2015	2/1/1992	2/1/1992
Collecting Agency	CARB	CARB	CARB	CARB
Analytical Lab	N/A	N/A	N/A	N/A
Reporting Agency	CARB	CARB	CARB	CARB
Pollutant	Outdoor Temperature	Relative Humidity	Wind Direction	Wind Speed
Parameter Code	62101	62201	61104	61101
Parameter Occurrence	2	2	1	1
Manufacturer/Model	Vaisala OT/RH	Vaisala OT/RH	RM Young Model	RM Young Model
Sampling Method	Instrumental	Instrumental	Instrumental	Instrumental
Method Code	059	059	066	066
Analysis Method	Vaisala HMP155	Vaisala HMP155	Ultrasonic Anemometer	Ultrasonic Anemometer
FRM/FEM/ARM/Other	Other	Other	Other	Other
Monitoring Objective	Public info	Public info	Public info	Public info
Statement of Purpose	Measures representative meteorology	Measures representative meteorology	Measures representative meteorology	Measures representative meteorology
Monitor Type	Other	Other	Other	Other
Affiliation	None	None	None	None
Site Type	Not applicable	Not applicable	Not applicable	Not applicable
Spatial Scale	Not applicable	Not applicable	Not applicable	Not applicable
Sampling Frequency	Continuous	Continuous	Continuous	Continuous
Sampling Season	Year Round	Year Round	Year Round	Year Round
Distance from Supporting Structure or Roof	9.0	9.0	9.0	9.0
Distance from flow obstructions on roof (m)	No obstruction	No obstruction	No obstruction	No obstruction
Distance from flow obstructions not on roof (m)	No obstruction	No obstruction	No obstruction	No obstruction
Distance from nearest tree drip line (m)	15 – 25 m	15 – 25 m	15 – 25 m	15 – 25 m
Distance to furnace or incinerator flue (m)	No furnace/flue	No furnace/flue	No furnace/flue	No furnace/flue
Distance between collocated PM monitors (m)	Not applicable	Not applicable	Not applicable	Not applicable
Distance with nearest PM monitor (m)	Not applicable	Not applicable	Not applicable	Not applicable
Unrestricted airflow (deg)	360	360	360	360
Probe height (m, agl)	15.0	15.0	15.0	15.0
Probe material	Not applicable	Not applicable	Not applicable	Not applicable
Residence time (seconds)	Not applicable	Not applicable	Not applicable	Not applicable
Changes in next 18 months?	No	No	No	No
Flow rate verification interval	N/A	N/A	N/A	N/A
Audit Date(s)	Not applicable	Not applicable	Not applicable	Not applicable

Appendix B Minimum Monitoring Requirement Assessment

Table 46 – Number of SLAMS Monitoring Sites Within Sacramento MSA

Pollutant/Type (if applicable)	Required in MSA ^(A)	Operated by					Total
		CARB ^(B)	EDC ^(C)	PC ^(D)	SM ^(E)	YS ^(F)	
O ₃	2	6	0	4	4	1	15
CO	3 ^(G)	0	0	0	2	0	2
NO ₂ Area-wide	1	3	0	0	3	0	6
Near-road	2 ^(G)	0	0	0	1	0	1
SO ₂	1	0	0	0	1	0	1
Pb NCore	0	0	0	0	0	0	0
Source Oriented	0	0	0	0	0	0	0
PM ₁₀	2-4	3	0	0	3 ^(H)	2	8
PM _{2.5} FEM/FRM	3	2	0	1	4	1	8
Continuous	2	3	0	4	5	1	13
PM _{10-2.5}	1	0	0	0	1	0	1

Source: U.S. EPA Air Quality System Extract Site/Monitor Report (AMP 500), accessed on 26 Mar 2026

(A) Number of monitors required in Sacramento MSA

(B) CARB – California Air Resources Board

(C) EDC – El Dorado County Air Quality Management District

(D) PC – Placer County Air Pollution Control District

(E) SM – Sacramento Metropolitan Air Quality Management District

(F) YS – Yolo-Solano Air Quality Management District

(G) The District is working with EPA and CARB to investigate potential sites, determine appropriate timeline, and funding to implement a 2nd near-road monitor

(H) Monitor was installed in March 2025

Appendix C Data Certification Letters to U.S. EPA and CARB

Figure 44 – 2024 Data Certification Letter to U.S. EPA, Page 1



Figure 45 – 2024 Data Certification Letter to U.S. EPA, Page 2

2025 Data Certification

Page 2

If you have any questions regarding Sac Metro Air District's data or certification report, please contact Ms. Janice Lam Snyder, Program Manager of Monitoring, Planning, and Rules Division at 916-491-0929 or jlam@airquality.org.

Sincerely,

Mark S. Loutzenhiser

Mark Loutzenhiser
Director, Monitoring, Planning, and Rules Division

Enclosures: Certification Evaluation and Concurrence (AMP600)
Quicklook All Parameters (AMP450NC)

cc: Shaye Hong, U.S. Environmental Protection Agency Region IX
(hong.shaye@epa.gov)

Fletcher Glover, U.S. Environmental Protection Agency Region IX
(Clover.Fletcher@epa.gov)

Jin Xu, California Air Resources Board
(Jin.Xu@arb.ca.gov)

Craig Anderson, California Air Resources Board
(Craig.Anderson@arb.ca.gov)

Nichole Lambinico, California Air Resources Board
(Nichole.Lambinico@arb.ca.gov)

Janice Lam Snyder, Monitoring Planning and Rules
(jlam@airquality.org)

Levi Ford, MPR/Air Monitoring Section
(lford@airquality.org)

David Yang, MPR/Planning & Data Analysis Section
(dyang@airquality.org)

Figure 46 – 2024 Data Certification Letter to U.S. EPA, Page 3

2025 Data Certification

Page 3

Table 1: Exception to AMP600’s Recommendation

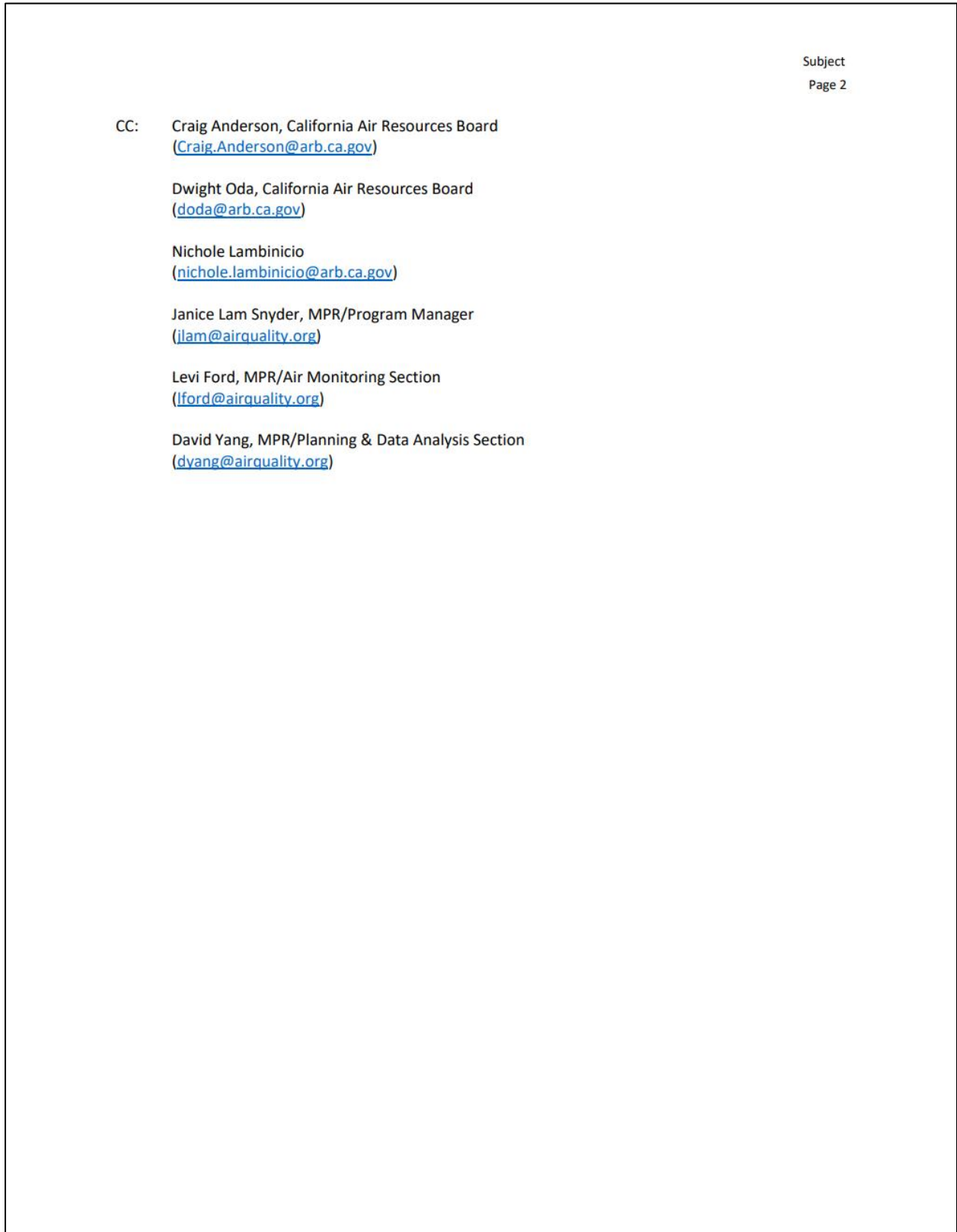
Site	Parameter & POC	Reason for AQS’ Recommendation	District Comment
Del Paso Manor 06-067-0006	SO2 42401-1	Annual summary completeness < 70%	A power outage on 2/17 caused the analyzer to fail, requiring extensive troubleshooting and repair through 4/21. Data was invalidated with a null code. Data outside this period were validated, with all required quality-assurance data submitted. (The analyzer entered a temporary shutdown on 6/5, as the monitoring shelter was being replaced and expanded; data after 6/5 did not count toward the completeness requirement.)
Folsom 06-067-0012	NO2 42602	Annual Performance Evaluation Audit Missing or 1 Level	The analyzer required full calibration after a significant shift in the 1-point QC check results. It was not yet completed at the regularly scheduled audit. The data otherwise met 1-pt QC and calibration requirements.
Bercut 06-067-0015	CO 42101-1	Quality assurance project plan not approved in 5 years	SMAQMD utilities CARBs gaseous QAPP, which is currently in the revision process.
Bercut 06-067-0015	NO2 42602		
Bruceville 06-067-0011	NO2 42602		
Del Paso Manor 06-067-0006	CO 42101-1		
Del Paso Manor 06-067-0006	NO2 42602		
Del Paso Manor 06-067-0006	SO2 42401		
Folsom 06-067-0012	NO2 42602		
Bruceville 06-067-0011	O3 44201		
Del Paso Manor 06-067-0006	O3 44201		
Folsom 06-067-0012	O3 44201		
Sloughhouse 06-067-5003	O3 44201		

The full 19-page data certification package to U.S. EPA is available for public review upon request.

Figure 47 – 2024 Data Certification Letter to CARB, Page 1




Figure 48 – 2024 Data Certification Letter to CARB, Page 2



The full 13-page data certification package to CARB is available for public review upon request.

Appendix D Sacramento-Del Paso Manor Temporary Shutdown

Figure 49 – Sac-DPM Temporary Shutdown Notification, Page 1



SACRAMENTO METROPOLITAN
AIR QUALITY
MANAGEMENT DISTRICT

January 7, 2025

Ms. Vallano
Air Quality Analysis Office
Environmental Protection Agency, Region 9
75 Hawthorne Street
San Francisco, CA 94105-3901

Subject: Notice of Temporary Shutdown for the Sacramento-Del Paso Manor (AQS ID: 06-067-0006) Ambient Air Monitoring Site

Dear Ms. Vallano:

The Sacramento Metropolitan Air Quality Management District (SMAQMD, District) is informing the United States Environmental Protection Agency (EPA) of the upcoming temporarily shut down of the Sacramento-Del Paso Manor ambient air monitoring site (AQS ID: 06-067-0006) and its associated parameters due to a scheduled replacement of the air monitoring station (AMS). The anticipated date of replacement is between February 1, 2025, through August 31, 2025. The District plans call for the new AMS to be operational and reporting data by September 30, 2025.

A temporary shutdown request was first submitted to the EPA on August 1, 2022. Due to needing a 240v power source brought to the AMS for operations, the project was significantly delayed.

The Sacramento-Del Paso Manor AMS is one of six NCore sites operating in California, a design value site for PM_{2.5}, part of the State and Local Air Monitoring Stations (SLAMS) and the Photochemical Assessment Monitoring Station (PAMS) site. The AMS is located approximately six miles northeast of downtown Sacramento. The site collects criteria pollutant, speciated, and surface meteorological data listed in **Table 1**.

Table 1

Pollutant	Manufacture / Model	Parameter Code	Monitor Type
O3	TAPI 400E	44201	SLAMS
CO	TAPI 300U	42101	SLAMS
NO2	TAPI 200UP	42602	SLAMS
NOY	TEI 42i-Y	42600	SLAMS
SO2	TAPI 100EU	42401	SLAMS
Total NMHC	TEI 55c	43102	SLAMS
Speciated VOC	Xontech 910A/912	43102	SLAMS

777 12th Street, Ste. 300 • Sacramento, CA 95814
Tel: 279-207-1122 • Toll Free: 800-880-9025
AirQuality.org

Figure 50 – Sac-DPM Temporary Shutdown Notification, Page 2

Carbonyl	Xontech 925	Multiple	SLAMS
Black Carbon	Magee Scientific	84313	SPM
PM10 (Primary)	Sierra Anderson	81102	SLAMS
PM10 (Audit)	Sierra Anderson	81102	SLAMS
PM2.5	Met One BAM 1020	88101	SLAMS
PM2.5 (Primary)	R & P 2025	88101	SLAMS
PM2.5 (Audit)	R & P 2025	88101	SLAMS
PM2.5	Met One BAM 1020	88502	SLAMS
PM2.5 Mass Speciated	Met One SASS	88502	SLAMS
OC & EC	URG 3000N	Multiple	SLAMS
PM10	R & P 2025	85101	Other
Outdoor Temperature	Climatronics 100093	62101	SLAMS
Relative Humidity	Climatronics 101669	62201	SLAMS
Solar Radiation	Climatronics 100848	63301	Other
Wind Direction	Climatronics F-460	61104	Other
Wind Speed	Climatronics F-460	61103	Other

This site has been an active AMS since 1979 and the roof of the structure has been expanded to allow more space for instruments. There has been extensive water damage to the roof, walls, and floor of the building from water intrusion during the winter months. Over the past four decades, the SMAQMD has conducted routine maintenance and performed numerous repairs on the AMS structure, but the years of cumulative damage and the need for additional space warrant a complete replacement of the station for long-term cost savings, as well as to ensure a high data completeness rate.

This replacement project includes four tasks: 1) design and procure the modular air monitoring station; 2) remove and demolish the existing AMS, fencing, and meteorological towers; 3) conduct on-site preparation work (installation of fencing, concrete foundation, electrical work, etc.); and 4) install the monitoring equipment at the site.

The temporary shutdown will cease operation of most criteria pollutant measurements and meteorological data until the structure is replaced and the instrumentation reinstalled. The District is proposing to run a PM_{2.5} FEM instrument and an Ozone FEM instrument approx. 25 feet east of the station's current location. The District believes that the data collected at this nearby temporary location will be comparable to the existing Sacramento-Del Paso Manor monitoring location. Siting the monitor here is appropriate because the data would be representative of the area-wide concentration and the sources around the area would be similar to the existing location.

The District will continue to work with the California Air Resources Board staff and EPA if any additional difficulties or issues delay construction. Once the District solidifies the timeline, we will work to provide the exact temporary shutdown dates to input into AQS.

Figure 51 – Sac-DPM Temporary Shutdown Notification, Page 3

We look forward to discussing this further if necessary. If you have any questions, please contact me at (916) 491-0929 or jam@airquality.org.

Sincerely,



Janice Lam Snyder
Program Manager
Monitoring, Planning, and Rules
Sac Metro Air District

CC:

Shaye Hong, USEPA
Grace Tuazon, CARB, MLD
Peishi (Bob) Gu, CARB, Planning
Mark Loutzenhiser, SMAQMD, Monitoring, Planning and Rules
Levi Ford, SMAQMD, Air Monitoring
David Yang, SMAQMD, Planning