

Department of Conservation California Geological Survey Regional Geologic and Hazards Mapping Program



California Geological Survey

NOA Activities

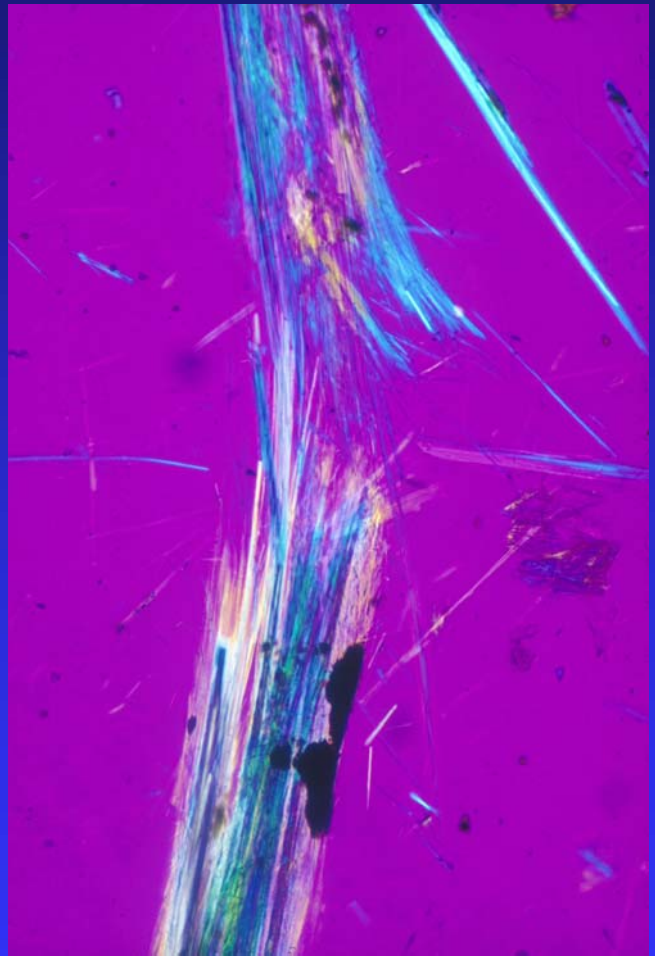
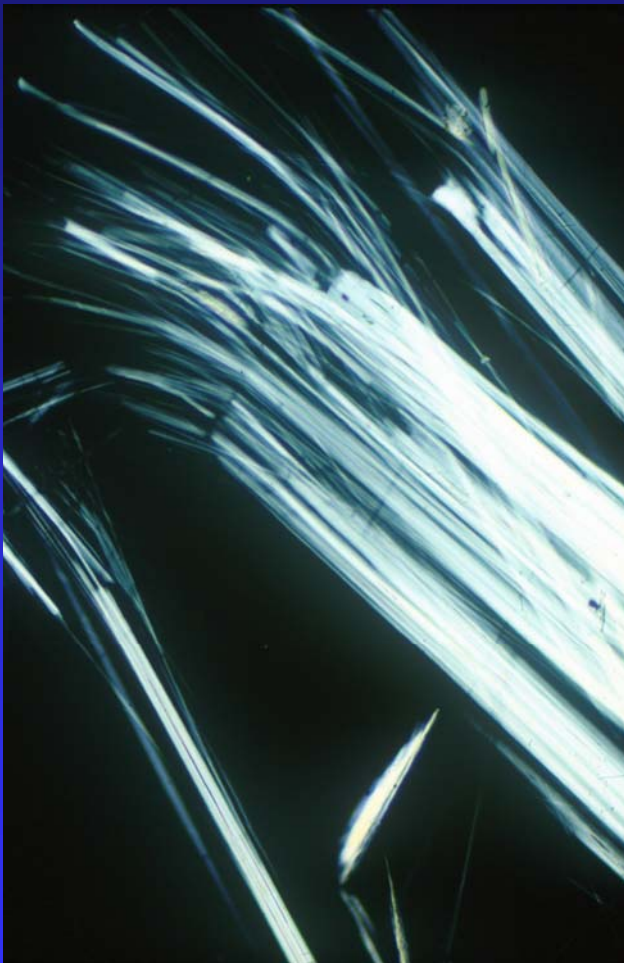
- Assist other state and local agencies by providing geologic information about NOA (since 1989)
- Member of the El Dorado County Asbestos Task Force (1998-1999)
- El Dorado County map (2000)
- Statewide map of ultramafic rocks (2000)
- Guidelines for geological investigations (2003)
- Joint USGS/CGS AVIRIS study (2004)

www.conservation.ca.gov/CGS/index.htm

What Is Asbestos?

- Asbestos is a term used to identify the asbestiform (fibrous) form of certain naturally occurring minerals.
- The types of asbestos are:
 - ◆ Serpentine-asbestos: Chrysotile
 - ◆ Amphibole-asbestos: Crocidolite, Amosite, Tremolite, Actinolite, and Anthophyllite

Chrysotile and Tremolite (33X)



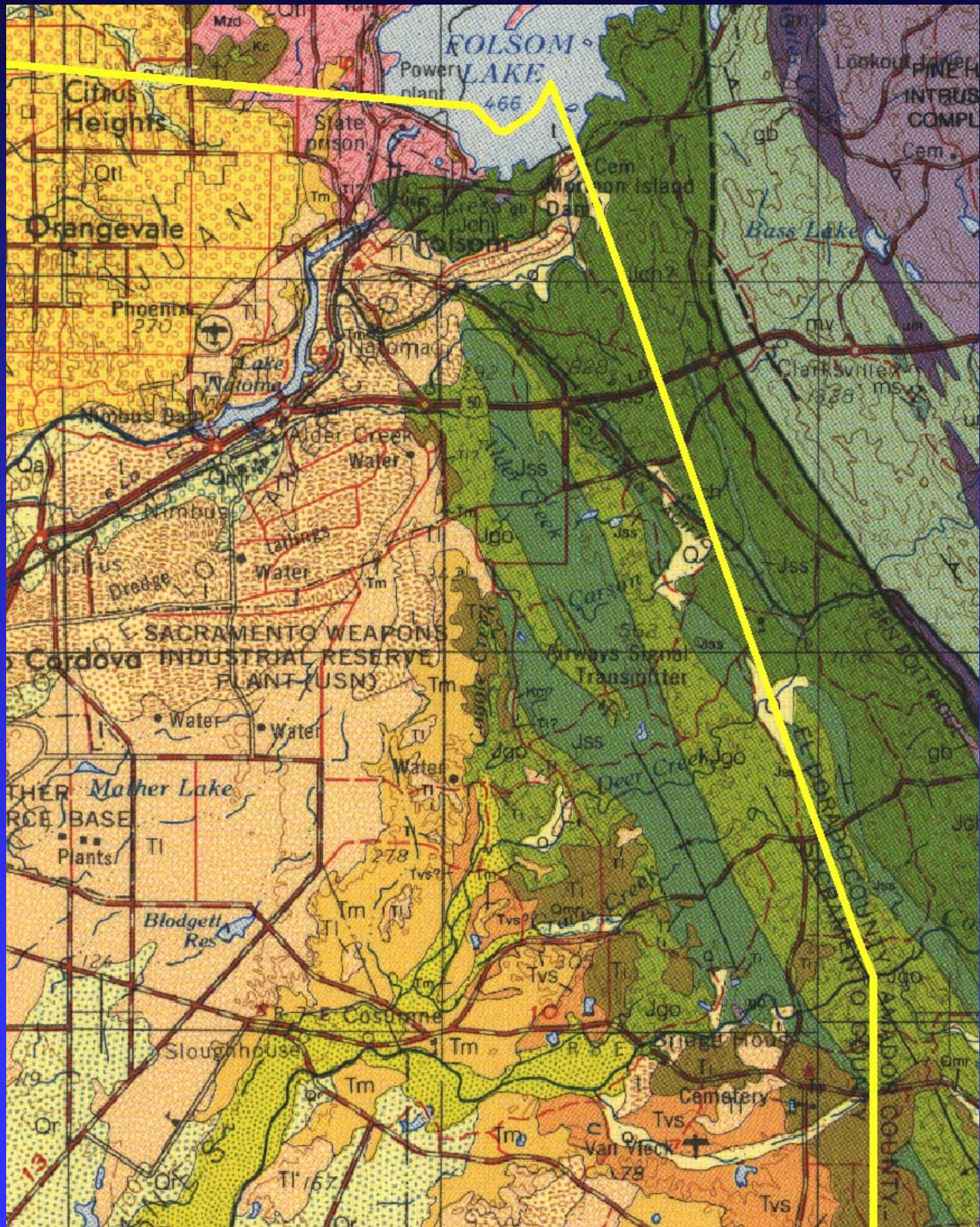
NOA In California

- Most commonly associated with serpentinite or ultramafic rock.
- May also occur in metamorphosed gabbro, basalt, carbonate rocks, or other metamorphic rocks.
- More common in fault or shear zones or at geologic boundaries.
- Chrysotile - serpentinite/ultramafic rock.
- Amphibole asbestos – serpentinite / ultramafic rock or in other rock types.

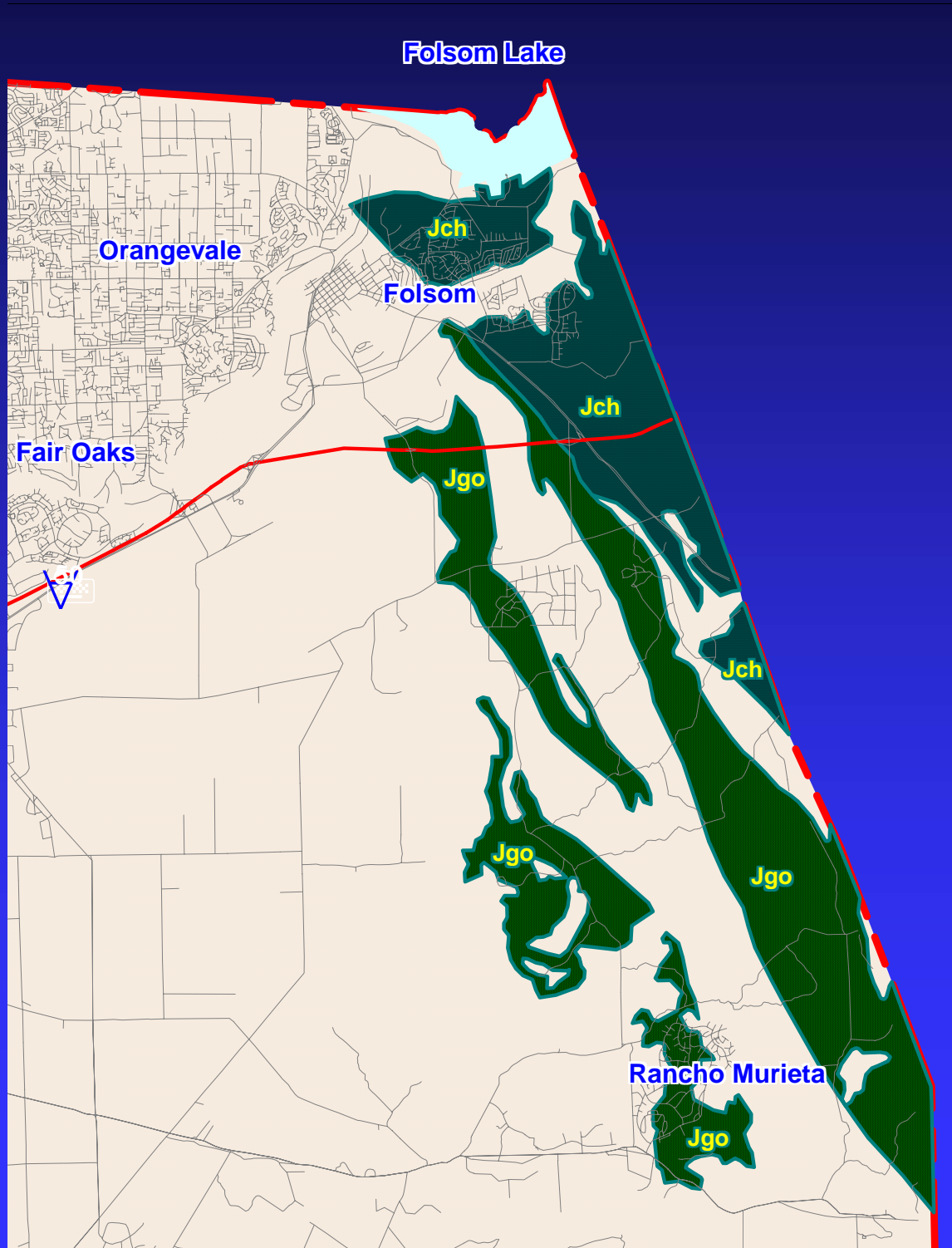
A General Location Guide for Ultramafic Rocks in California, Areas More Likely to Contain NOA



Eastern Sacramento County



Metavolcanic Rocks in Eastern Sacramento County



Department of Conservation California Geological Survey Regional Geologic and Hazards Mapping Program

