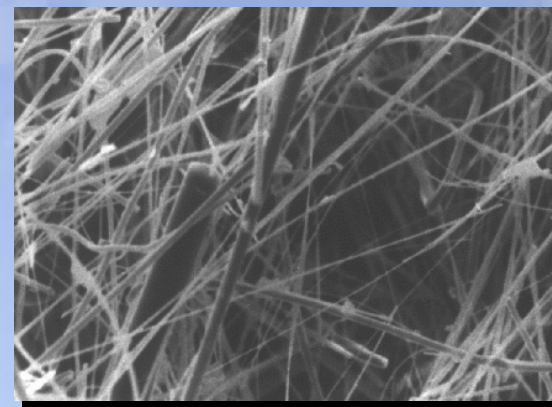


Naturally-occurring Asbestos



Larry Greene

Air Pollution Control Officer

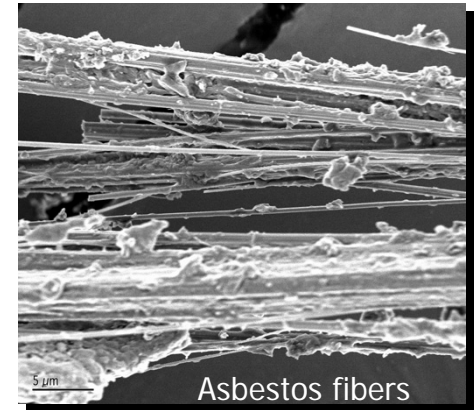
October 5, 2004

What I'll Be Covering

- **Asbestos overview**
- **AQMD's responsibilities**
- **State ATCM requirements**
- **Determination for Folsom**
- **Long-term actions**

Asbestos Overview

- Asbestos fibers are a human health hazard when airborne.
- Chrysotile is the most common kind in California. Tremolite and actinolite are also found.
- Asbestos is classified as a carcinogen.
- Asbestos is often found in serpentine rock and ultramafic rock, especially near fault zones such as those in the foothills.



Air District Responsibilities

- **Demolition –**

Properly removing asbestos-containing material (insulation, tiles, “cottage cheese” ceiling material) from buildings.

- **Naturally-occurring asbestos (NOA) -**

Occurs in rock and soil as a result of natural geologic processes, often near earthquake faults.

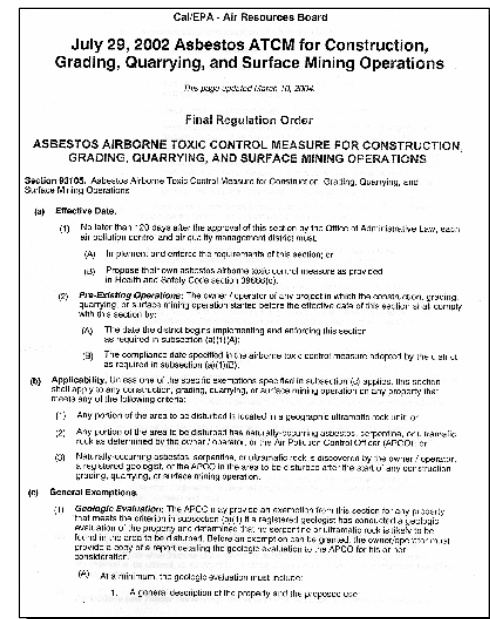
FACT: 44 of 58 counties in California have areas of NOA

ATCM

(Asbestos Airborne Toxic Control Measure)

The ATCM was created by Cal EPA/Air Resources Board and applies when:

- The area of soil to be disturbed is in an ultramafic rock zone.
- Any portion of the area has NOA, serpentine or ultramafic rock.
- NOA, serpentine or ultramafic rock is discovered by the land owner, a geologist or the APCO after the start of grading or construction.



ATCM Requirements

The ATCM requires implementation of dust control measures, including:

- Regularly watering areas where grading or other soil disturbance is occurring.
- Preventing the “track-out” of soil by construction equipment leaving the work site.
- At the end of construction, covering disturbed soil with 3-inches of clean fill dirt or vegetative cover.



Determination

- July 21, 2004, DTSC notified AQMD that NOA had been found at proposed Lago Vista High School site in Folsom.



**Proposed
Lago Vista
High
School Site
at Golf
Links Drive
and
Broadstone
Parkway**



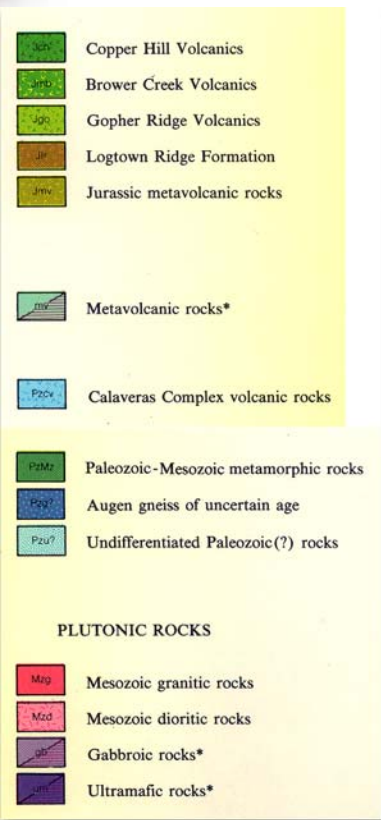
Determination (cont.)

- Numerous meetings held with City of Folsom and Elliott Homes (developer of Empire Ranch).
- Folsom immediately required developers to implement heavy watering to control dust.
- Elliott Homes required to submit a dust mitigation plan for AQMD approval.

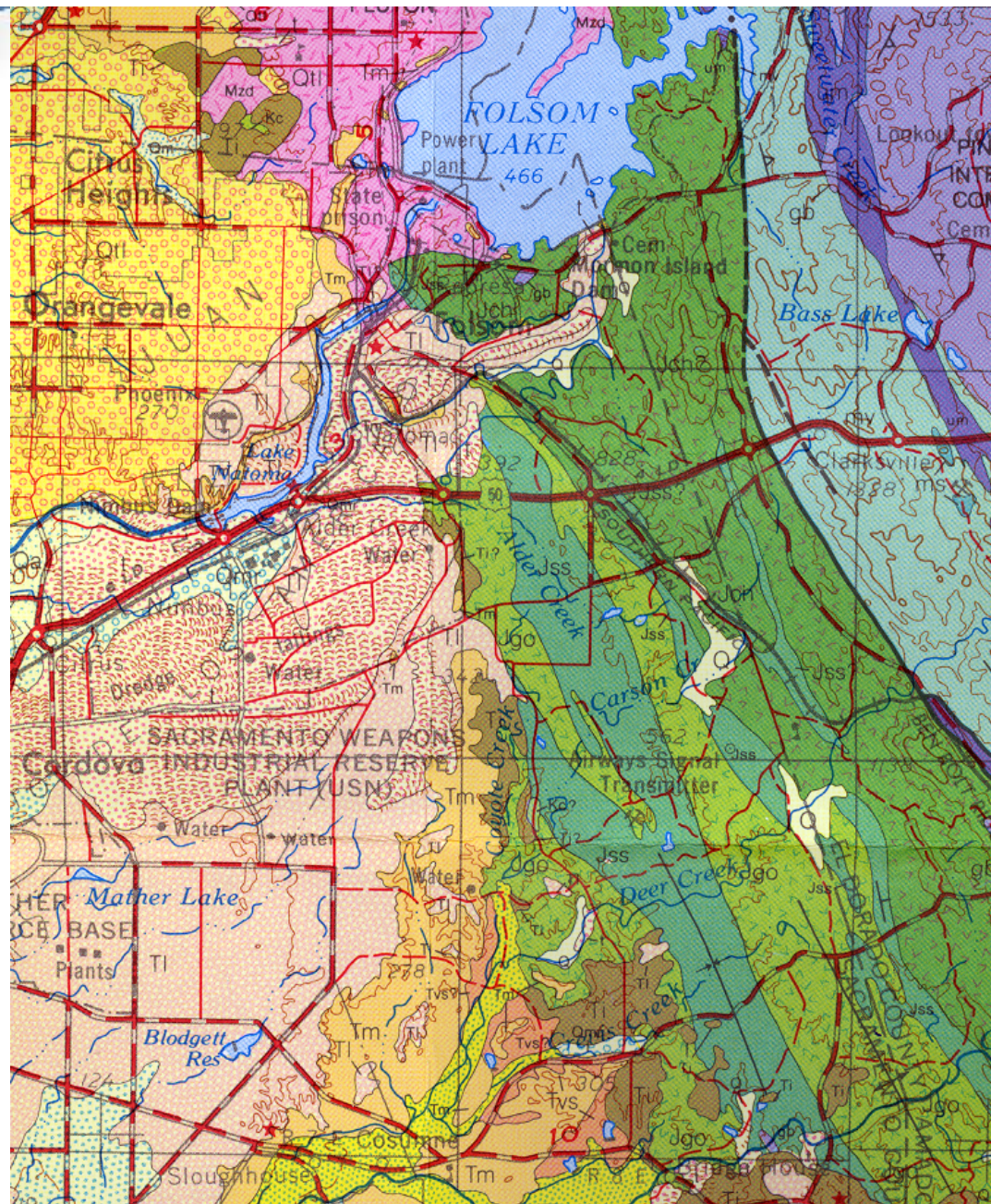


Determination (cont.)

- **AQMD met with State Geologist's staff.**
 - **On August 12, requested a determination by State Geologist on extent of NOA in Folsom.**
- **Began preparations to assist Folsom with a community meeting to be held in October.**
- **Formed internal working group to monitor/manage process and to develop a long term strategy.**
- **Received a response from State Geologist on September 17, 2004.**



Legend

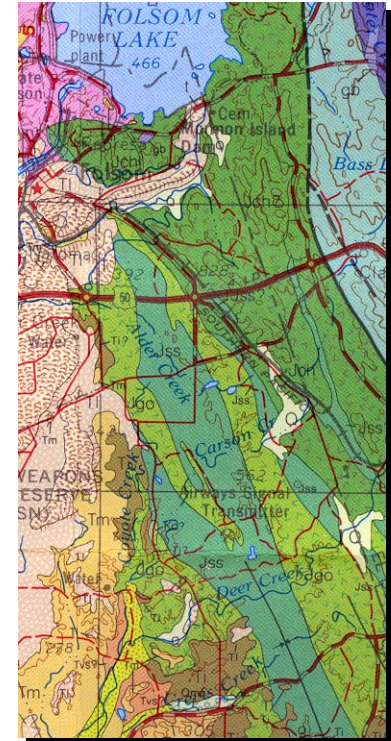


Existing geologic map published 1981

Determination (cont.)

AQMD has now determined:

- Copper Hill Volcanics and Gopher Ridge Volcanics can be expected to contain asbestos.
- NOA occurrences are small and irregularly distributed.
- On-site inspection will be required to determine if asbestos is present.
- Areas are subject to the ATCM unless sampling of sites proves otherwise.



Long Term

- The City of Folsom will create a standard policy for construction permits.
- AQMD will work with the County of Sacramento to determine procedures.
- City of Folsom will hold a public workshop on this issue with support from the AQMD.
- A more-defined geologic map is needed for the Folsom area.
 - AQMD will work with State Geologist to determine cost and timeframe.





Rock quarry
and
examples of
development
at Empire
Ranch



**Additional
example of
development
at Empire
Ranch
(looking
northwest)**

