



Sac Metro Air District Regulations and Cannabis Operations

Brian Krebs, Stationary Source, Permitting Program Supervisor &
Victoria Pena, Stationary Source, Air Quality Specialist

April 25, 2019



The District's Role in Sacramento

- 35 Local Air Districts in California
- The District is required by both Federal and State law to adopt and enforce air quality regulations
- These regulations are intended to protect the public health and ensure that the air we breathe meets federal and state health standards.
- The District's authority includes City of Sacramento, Citrus Heights, Elk Grove, Folsom, Galt, Isleton, Rancho Cordova, as well as all unincorporated areas of Sacramento County

California Air Districts





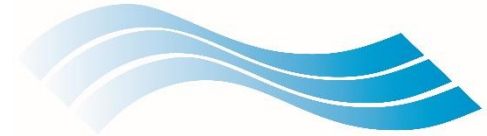
Overview

- Applicable District Rules
- Types of Emissions
- Who Needs a Permit
- District Permitting Process
- Inspection Process
- Resources



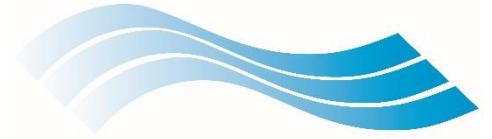
Applicable District Rules

- Rule 201: General Permit Requirements
 - Facilities that emit ≥ 2 lbs. per day of emissions
 - Engines > 50 hp
- Rule 402: Nuisance
- Rule 411: NO_x from Boilers, Process Heaters and Steam Generators
 - Boilers with an input rating of 1 million British Thermal Units or greater



District Rules Continued

- Rule 466: Solvent Cleaning
 - Emissions from solvents used is ≥ 2 lbs. per day
 - VOC content limits
(use of solvents no greater than 25 g/L (0.21 lbs./gal))



Types of Emissions Regulated by the District

- Particulate Matter (PM)
- Nitrogen Oxides (NO_x)
- Volatile Organic Compounds (VOCs)

Cannabis related processes and equipment that may require a District permit

- **Stationary and Portable Generators: Natural Gas or Diesel Powered**
 - Permit required if > 50 HP
 - Permit required if < 50 HP and part of the cannabis operation (e.g. combined cannabis manufacturer and cultivation facility)
 - Permit exempt if < 50 HP and not part of the cannabis operations (e.g. cannabis cultivation only facility)
 - Distributed Generation

Cannabis related processes and equipment that may require a District permit

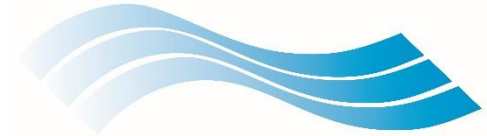
➤ Stationary and Portable Generators



Cannabis related processes and equipment that may require a District permit

- **Cannabis extraction and equipment/surface cleaning processes**
 - Permit required for air pollution control devices if emission from solvents used is \geq 2 lbs. per day, or if necessary to prevent nuisance
 - Permit is required if emissions from surface preparation or clean-up using solvents is \geq 2 lbs. per day. (e.g. using IPA or ethanol)





Cannabis related processes and equipment that may require a District permit

➤ Cannabis grinding, milling, cutting

- Permit is required for air pollution control devices - if particulate matter emissions are ≥ 2 lbs. per day, or to prevent nuisance
- Dust collection equipment (baghouse/cyclone)



Cannabis related processes and equipment that may require a District permit

- **Boilers with input rating ≥ 1 million BTU or combined input rating is ≥ 1 million**





How to Apply for a District Permit

- Application forms are on the District's website
<http://www.airquality.org/Businesses/Permits-Registration-Programs>
- All application forms must be submitted with a wet signature and application fee
- Application fees ([Rule 301](#)) are based on equipment type/size
- Contact the District if you need assistance filling out your application, are unsure of which application fee applies to your operations, or are unsure if your facility requires a permit



District Inspection Process

- Stationary Source Field Operations Staff
 - Public Complaints (Odor/Nuisance/Dust)
 - Stationary Source Inspections (e.g. manufacturers, coating operations, gas stations, asphalt plants)
 - Portable Engine/Equipment Inspections





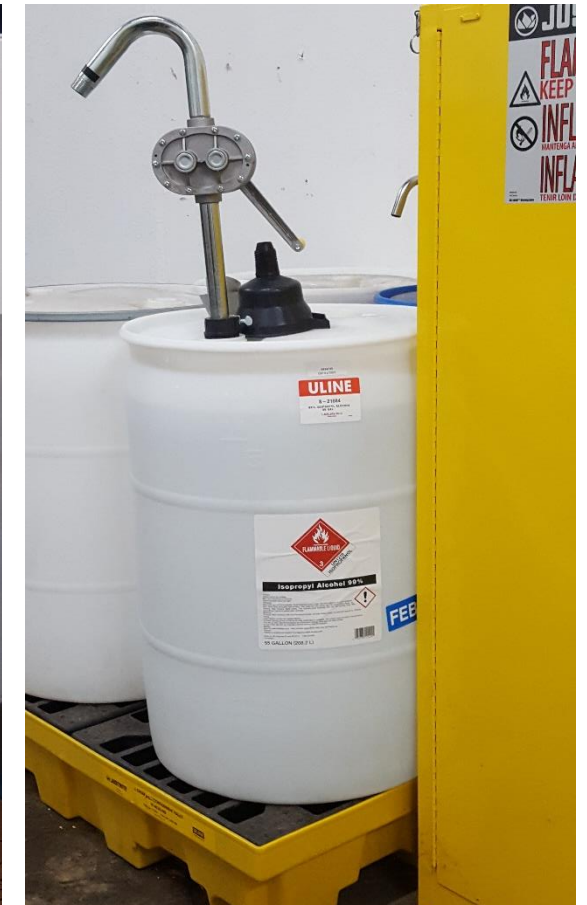
District Inspection Process

- Stationary Source Inspectors have started conducting Cannabis Facility inspections, starting with manufacturers.
- Initial inspections include outreach and education of District Rules, permit application process, and to ensure cannabis industry environmental compliance.





What are District Inspectors Looking For?





What are District Inspectors Looking For?



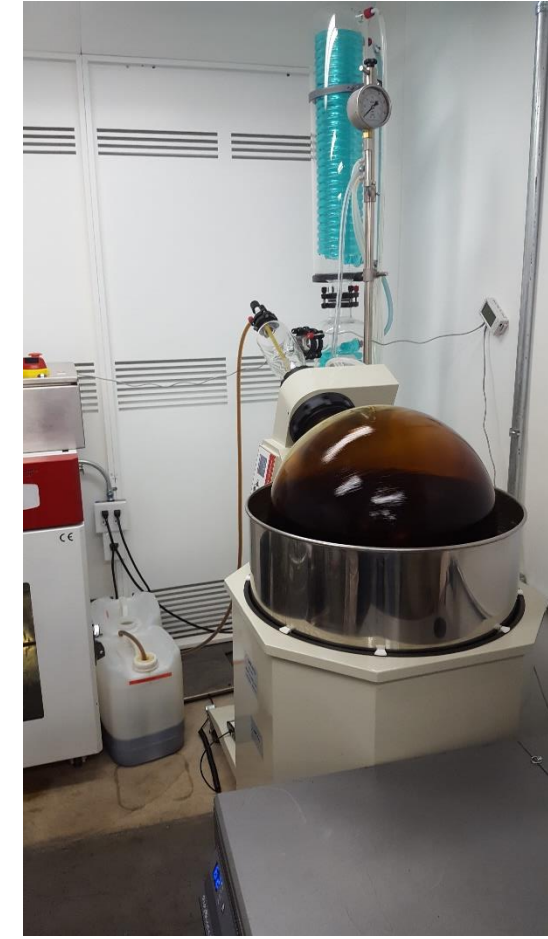


What are District Inspectors Looking For?





What are District Inspectors Looking For?





Resources

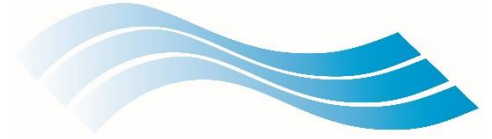
Contacts: Brian Krebs Bkrebs@airquality.org

Victoria Pena Vpena@airquality.org

Jeff Yang Jyang@airquality.org

- Cannabis Information:

<http://www.airquality.org/businesses/permits-registration-programs/permit-applications-recordkeeping-advisories/cannabis-operations>



Questions?
